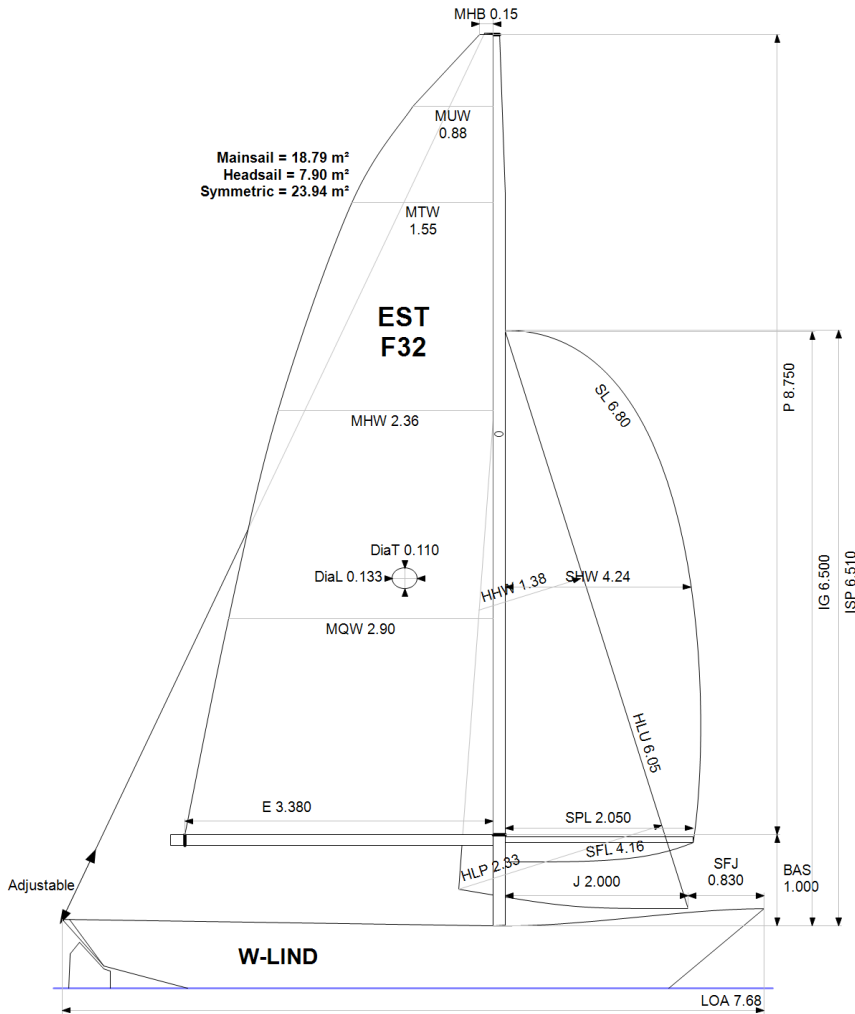


GPH = 836.0 **CDL = 5.108**



BOAT

Class **FOLKBOAT**
 Designer
 Builder **SET**
 Age Date **01/1972**
 Series Date **01/1941**
 Offset File **G1746.OFF**

HULL

Length Overall **7.680 m**
 Maximum Beam **2.210 m**
 Draft **1.142 m**
 Displacement **1,939 kg**
 DLR **9.4625**
 IMS Division **Cruiser/Racer**
 Dynamic Allowance **0.521%**
 Age Allowance **0.487%**

PROPELLER

Installation **No Propeller**
 Type **N/A**
 Diameter **N/A**

CREW

Maximum weight **240 kg**
 Minimum weight **155 kg * when applied**
 Non Manual Power **No**
 Crew Arm Extension

SAIL AREAS (m²)

	Measured	Rated
Mainsail	18.79	19.60
Headsail Luffed	7.90	7.90
Headsail Flying		
Symmetric	23.94	23.94
Asymmetric		

SAIL LIMITATIONS

Headsails **5** * Woven polyester sails
 Spinnakers **4**

STABILITY

Righting Moment **20.1 kg·m**
 Stability Index **N/A**

OWNER

The owner certifies that he/she understands his/her responsibilities under ORC Rule and Regulations.

Rated boat velocities in knots							
Wind Velocity	6 kt	8 kt	10 kt	12 kt	14 kt	16 kt	20 kt
Beat Angles	44.3°	42.4°	42.0°	43.3°	43.5°	44.3°	45.0°
Beat VMG	2.45	2.95	3.31	3.53	3.60	3.61	3.59
52°	3.79	4.47	5.02	5.33	5.44	5.48	5.48
60°	4.02	4.73	5.27	5.54	5.66	5.72	5.72
75°	4.20	4.99	5.48	5.70	5.87	5.98	6.09
90°	4.41	5.27	5.71	5.95	6.07	6.16	6.44
110°	4.35	5.25	5.70	5.99	6.28	6.55	6.82
120°	4.17	5.08	5.61	5.91	6.20	6.50	7.04
135°	3.69	4.56	5.35	5.73	6.00	6.28	6.89
150°	3.21	4.06	4.84	5.46	5.78	6.04	6.60
Run VMG	2.78	3.55	4.24	4.94	5.46	5.77	6.29
Gybe Angles	152.0°	160.0°	174.0°	180.0°	180.0°	180.0°	180.0°

Time Allowances in secs/NM								Single Number Scoring Options		
Wind Velocity	6 kt	8 kt	10 kt	12 kt	14 kt	16 kt	20 kt	Course	Time On Distance	Time On Time
Beat VMG	1468.1	1221.8	1088.5	1020.7	1000.4	996.2	1003.8	Windward / Leeward	923.3	0.6498
52°	950.0	805.4	716.5	675.7	661.3	656.5	657.2			
60°	895.5	761.0	683.7	650.4	635.8	629.8	629.5	All purpose	743.3	0.8072
75°	856.9	721.2	657.1	631.5	613.5	601.5	591.3			
90°	816.9	683.0	630.4	604.7	593.1	584.7	559.0			
110°	826.9	685.7	631.5	601.1	573.5	549.7	527.7			
120°	863.9	708.1	641.4	609.0	581.0	553.6	511.6			
135°	975.9	788.9	673.3	628.3	599.9	572.8	522.9			
150°	1122.2	887.0	744.2	659.9	622.8	596.4	545.9			
Run VMG	1294.3	1014.2	848.6	728.6	659.1	623.5	572.5			
Selected Courses										
Windward / Leeward	1381.2	1118.0	968.6	874.7	829.7	809.8	788.2			
All purpose	1059.1	869.7	768.0	711.3	685.1	669.3	648.5			

Custom scoring options for Estonia

Single Number	Time On Distance	Time On Time
Coastal/Long Distance	812.4	0.7386
Triple Number Coastal/Long Distance Low	964.3	0.6222
Triple Number Coastal/Long Distance Medium	736.8	0.8143
Triple Number Coastal/Long Distance High	665.5	0.9016
Triple Number Windward/Leeward Low	1249.5	0.4802
Triple Number Windward/Leeward Medium	915.1	0.6557
Triple Number Windward/Leeward High	806.7	0.7438

Performance Curve	6 kt	8 kt	10 kt	12 kt	14 kt	16 kt	20 kt
Coastal/Long Distance	1372.5	1046.3	868.6	763.9	713.0	675.4	609.3