

GPH = 634.1 **CDL = 8.366**

BOAT

Class **X-99**
Designer **NIELS JEPPESEN**
Builder **X-YACHTS**
Age Date **01/1986**
Series Date **04/1985**
Offset File **x99.OD.off**

HULL

Length Overall **10.000 m**
Maximum Beam **2.990 m**
Draft **1.801 m**
Displacement **3,119 kg**
DLR **5.1660**
IMS Division **Cruiser/Racer**
Dynamic Allowance **0.180%**
Age Allowance **0.487%**

PROPELLER

Installation **Strut**
Type **Folding 2 blades**
Diameter **0.356m**

CREW

Maximum weight **520 kg**
Minimum weight **390 kg * when applied**
Non Manual Power **No**
Crew Arm Extension

SAIL AREAS (m²)

	Measured	Rated
Mainsail	32.66	33.27
Headsail Luffed	19.22	19.22
Headsail Flying		
Symmetric	72.59	72.59
Asymmetric	51.05	51.05

* All asymmetric spinnakers with SHW/SFL > 85%

SAIL LIMITATIONS

Headsails **5**
Spinnakers **4** * Asymmetric SHALL NOT be tacked on the pole

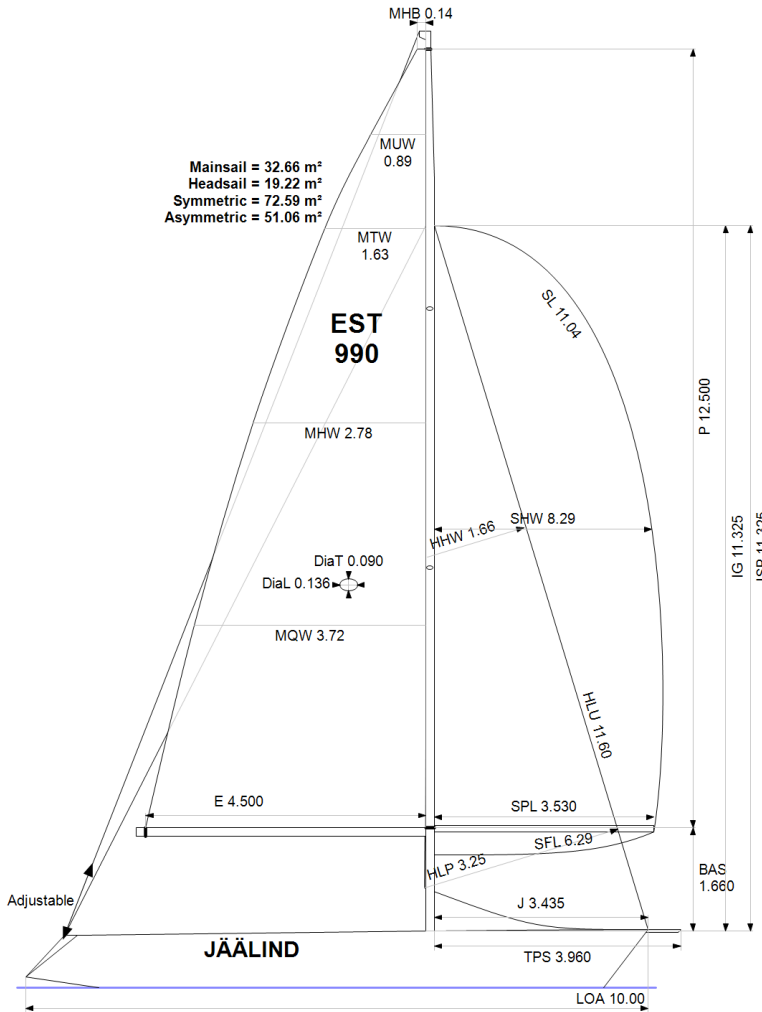
STABILITY

Righting Moment **65.7 kg·m**
Stability Index **N/A**

COMMENTS

Boat weight owner declaration

OWNER



Rated boat velocities in knots

Wind Velocity	6 kt	8 kt	10 kt	12 kt	14 kt	16 kt	20 kt
Beat Angles	42.8°	41.3°	39.8°	38.8°	38.3°	38.3°	38.5°
Beat VMG	3.38	4.10	4.63	4.86	4.95	4.99	5.07
52°	5.17	6.13	6.66	6.88	6.97	7.02	7.12
60°	5.47	6.38	6.83	7.07	7.19	7.26	7.37
75°	5.70	6.57	6.98	7.27	7.52	7.70	7.85
90°	5.72	6.71	7.15	7.50	7.70	7.99	8.46
110°	5.76	6.78	7.29	7.76	8.16	8.62	9.21
120°	5.57	6.67	7.20	7.71	8.26	8.79	9.88
135°	4.96	6.14	6.90	7.35	7.87	8.43	9.97
150°	4.09	5.17	6.19	6.90	7.33	7.80	8.89
Run VMG	3.54	4.48	5.36	6.11	6.71	7.15	8.03
Gybe Angles	144.0°	149.0°	149.3°	158.3°	180.0°	180.0°	180.0°

The owner certifies that he/she understands his/her responsibilities under ORC Rule and Regulations.

Time Allowances in secs/NM							
Wind Velocity	6 kt	8 kt	10 kt	12 kt	14 kt	16 kt	20 kt
Beat VMG	1064.7	877.5	777.2	740.4	726.8	721.9	710.6
52°	696.4	587.7	540.5	523.2	516.6	513.2	505.4
60°	658.0	564.1	526.9	509.5	500.8	496.0	488.7
75°	631.9	548.0	516.1	495.1	478.5	467.4	458.8
90°	629.2	536.7	503.2	480.1	467.4	450.6	425.6
110°	625.1	530.8	494.0	463.8	441.4	417.8	391.1
120°	646.8	539.9	499.8	466.9	435.8	409.4	364.3
135°	725.5	586.5	522.1	489.5	457.5	426.8	361.2
150°	880.8	696.5	581.6	521.7	491.2	461.7	404.9
Run VMG	1017.1	804.2	671.6	589.1	536.3	503.2	448.1
Selected Courses							
Windward / Leeward	1040.9	840.9	724.4	664.7	631.6	612.6	579.3
All purpose	793.9	654.6	583.9	546.9	523.6	506.9	478.1

Single Number Scoring Options		
Course	Time On Distance	Time On Time
Windward / Leeward	697.0	0.8609
All purpose	565.3	1.0613

Custom scoring options for Estonia

Single Number	Time On Distance	Time On Time
Coastal/Long Distance	617.1	0.9722
Triple Number Coastal/Long Distance Low	724.2	0.8285
Triple Number Coastal/Long Distance Medium	562.4	1.0669
Triple Number Coastal/Long Distance High	500.3	1.1993
Triple Number Windward/Leeward Low	940.9	0.6377
Triple Number Windward/Leeward Medium	691.0	0.8683
Triple Number Windward/Leeward High	604.8	0.9920

Performance Curve	6 kt	8 kt	10 kt	12 kt	14 kt	16 kt	20 kt
Coastal/Long Distance	1038.5	789.6	655.3	583.2	544.8	512.6	454.7