

GPH = 781.6 **CDL = 6.013**

BOAT

Class **FENIX**
Designer **Pelle Petterson**
Builder **Pelle Petterson AB**
Age Date **01/1985**
Series Date **01/1981**
Offset File **fenix3.off**

HULL

Length Overall **8.300 m**
Maximum Beam **2.894 m**
Draft **1.572 m**
Displacement **2,950 kg**
DLR **8.5652**
IMS Division **Cruiser/Racer**
Dynamic Allowance **0.458%**
Age Allowance **0.487%**

PROPELLER

Installation **Strut**
Type **Folding 2 blades**
Diameter **0.340m**

CREW

Maximum weight **120 kg**
Minimum weight **120 kg * when applied**
Non Manual Power **No**
Crew Arm Extension

SAIL AREAS (m²)

	Measured	Rated
Mainsail	20.41	20.72
Headsail Luffed	14.01	14.01
Headsail Flying		
Symmetric	41.82	41.82
Asymmetric	33.55	35.91

* All asymmetric spinnakers with SHW/SFL > 85%

SAIL LIMITATIONS

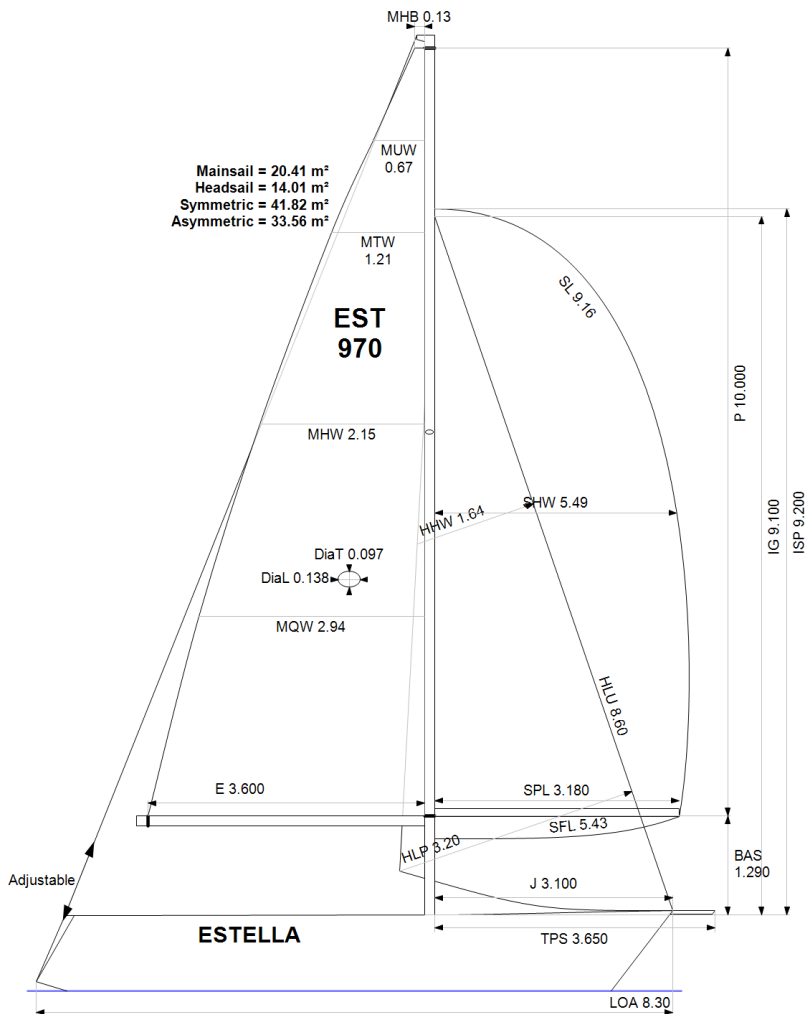
Headsails **5** * Woven polyester sails
Spinnakers **4** * Asymmetric SHALL NOT be tacked on the pole

STABILITY

Righting Moment **50.0 kg·m**
Stability Index **N/A**

OWNER

The owner certifies that he/she understands his/her responsibilities under ORC Rule and Regulations.



Rated boat velocities in knots

Wind Velocity	6 kt	8 kt	10 kt	12 kt	14 kt	16 kt	20 kt
Beat Angles	44.3°	42.4°	42.0°	42.8°	42.4°	42.8°	44.3°
Beat VMG	2.55	3.09	3.48	3.78	3.95	3.96	3.85
52°	3.94	4.67	5.27	5.70	5.89	5.93	5.87
60°	4.18	4.93	5.55	5.92	6.10	6.17	6.16
75°	4.40	5.23	5.84	6.10	6.29	6.43	6.52
90°	4.66	5.60	6.14	6.41	6.52	6.61	6.86
110°	4.68	5.65	6.18	6.49	6.78	7.06	7.33
120°	4.54	5.51	6.10	6.43	6.73	7.05	7.60
135°	4.06	4.99	5.80	6.22	6.52	6.84	7.48
150°	3.48	4.40	5.21	5.88	6.25	6.53	7.14
Run VMG	3.01	3.82	4.54	5.22	5.81	6.19	6.75
Gybe Angles	149.0°	153.0°	155.0°	170.0°	180.0°	180.0°	180.0°

Time Allowances in secs/NM							
Wind Velocity	6 kt	8 kt	10 kt	12 kt	14 kt	16 kt	20 kt
Beat VMG	1410.5	1165.1	1033.6	952.1	912.2	908.7	935.9
52°	914.4	770.6	683.6	632.0	611.2	606.6	613.7
60°	860.9	730.0	648.9	608.1	590.2	583.5	584.8
75°	819.0	688.2	615.9	590.4	572.3	560.3	551.9
90°	773.3	642.9	586.5	562.0	552.2	545.0	524.7
110°	768.4	637.2	582.4	554.3	530.8	510.0	490.9
120°	793.3	653.9	589.7	560.0	534.9	511.0	473.8
135°	887.3	721.1	621.0	578.5	551.8	526.4	481.5
150°	1034.8	817.8	691.3	611.9	575.9	551.1	504.2
Run VMG	1194.8	941.8	793.7	689.3	619.3	581.5	533.4
Selected Courses							
Windward / Leeward	1302.6	1053.4	913.7	820.7	765.8	745.1	734.6
All purpose	997.5	818.1	720.7	664.4	632.1	617.1	603.7

Single Number Scoring Options		
Course	Time On Distance	Time On Time
Windward / Leeward	863.8	0.6946
All purpose	693.5	0.8652

Custom scoring options for Estonia

Single Number	Time On Distance	Time On Time
Coastal/Long Distance	758.2	0.7914
Triple Number Coastal/Long Distance Low	907.9	0.6609
Triple Number Coastal/Long Distance Medium	687.9	0.8722
Triple Number Coastal/Long Distance High	615.8	0.9743
Triple Number Windward/Leeward Low	1178.1	0.5093
Triple Number Windward/Leeward Medium	857.4	0.6998
Triple Number Windward/Leeward High	746.4	0.8039

Performance Curve	6 kt	8 kt	10 kt	12 kt	14 kt	16 kt	20 kt
Coastal/Long Distance	1291.9	985.0	817.0	712.2	657.8	623.2	566.9