

GPH = 558.1 **CDL = 12.376**

BOAT

Class **First 53 F5**
Designer **B. FARR**
Builder **Beneteau**
Age Date **01/1992**
Series Date **04/1991**
Offset File **F044.OFF**

HULL

Length Overall **15.757 m**
Maximum Beam **4.502 m**
Draft **2.568 m**
Displacement **14,712 kg**
DLR **5.3755**
IMS Division **Cruiser/Racer**
Dynamic Allowance **0.250%**
Age Allowance **0.487%**

PROPELLER

Installation **Shaft exposed**
Type **Feathering 2 blades**
Diameter **0.500m**

CREW

Maximum weight **220 kg**
Minimum weight **135 kg * when applied**
Non Manual Power
Crew Arm Extension

SAIL AREAS (m²)

	Measured	Rated
Mainsail	72.55	73.68
Headsail Luffed	67.34	67.34
Headsail Flying		
Symmetric	168.87	168.87
Asymmetric		

SAIL LIMITATIONS

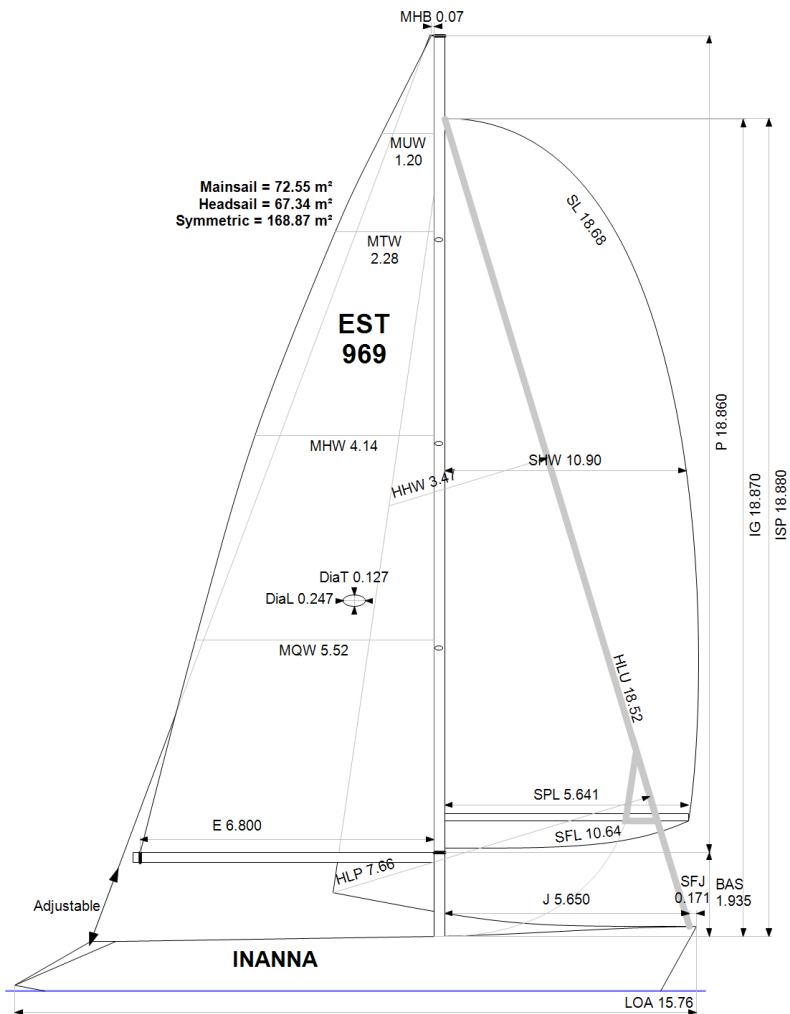
Headsails **1**
Spinnakers **5**

STABILITY

Righting Moment **435.8 kg·m**
Stability Index **N/A**

OWNER

The owner certifies that he/she understands his/her responsibilities under ORC Rule and Regulations.



Rated boat velocities in knots

Wind Velocity	6 kt	8 kt	10 kt	12 kt	14 kt	16 kt	20 kt
Beat Angles	43.5°	41.6°	40.5°	40.5°	40.1°	39.8°	39.0°
Beat VMG	3.78	4.62	5.21	5.58	5.77	5.87	5.96
52°	5.83	6.94	7.76	8.18	8.34	8.43	8.50
60°	6.19	7.30	8.08	8.44	8.60	8.69	8.76
75°	6.50	7.61	8.31	8.66	8.88	9.03	9.17
90°	6.47	7.58	8.33	8.73	9.01	9.25	9.65
110°	6.20	7.54	8.44	8.89	9.20	9.41	9.84
120°	6.04	7.36	8.33	8.85	9.25	9.66	10.23
135°	5.45	6.74	7.82	8.53	8.97	9.39	10.37
150°	4.57	5.73	6.81	7.77	8.46	8.89	9.72
Run VMG	3.96	4.96	5.90	6.75	7.46	8.09	9.00
Gybe Angles	141.0°	147.0°	148.5°	152.0°	158.0°	174.0°	180.0°

Time Allowances in secs/NM							
Wind Velocity	6 kt	8 kt	10 kt	12 kt	14 kt	16 kt	20 kt
Beat VMG	953.1	779.9	691.5	645.5	624.0	613.1	604.1
52°	618.0	518.6	463.9	440.4	431.5	426.9	423.5
60°	581.2	492.9	445.8	426.7	418.6	414.4	410.7
75°	553.5	472.8	433.1	415.7	405.4	398.7	392.4
90°	556.8	475.0	432.1	412.4	399.7	389.4	372.9
110°	580.5	477.7	426.5	404.9	391.5	382.5	366.0
120°	595.8	489.2	432.1	406.9	389.3	372.6	352.0
135°	660.7	533.8	460.5	422.2	401.4	383.6	347.2
150°	788.3	628.6	528.6	463.0	425.6	404.9	370.4
Run VMG	910.2	725.9	610.4	533.2	482.8	445.1	399.9
Selected Courses							
Windward / Leeward	931.6	752.9	650.9	589.3	553.4	529.1	502.0
All purpose	712.0	584.0	513.5	475.5	454.1	440.0	420.6

Single Number Scoring Options		
Course	Time On Distance	Time On Time
Windward / Leeward	617.5	0.9716
All purpose	495.2	1.2116

Custom scoring options for Estonia

Single Number	Time On Distance	Time On Time
Coastal/Long Distance	542.3	1.1065
Triple Number Coastal/Long Distance Low	648.0	0.9259
Triple Number Coastal/Long Distance Medium	491.8	1.2199
Triple Number Coastal/Long Distance High	436.2	1.3754
Triple Number Windward/Leeward Low	842.2	0.7124
Triple Number Windward/Leeward Medium	614.5	0.9764
Triple Number Windward/Leeward High	525.0	1.1429

Performance Curve	6 kt	8 kt	10 kt	12 kt	14 kt	16 kt	20 kt
Coastal/Long Distance	929.5	706.6	582.9	509.4	471.5	443.7	402.7