

GPH = 725.0 **CDL = 6.618**

BOAT

Class **ALBIN EXPRESS**
Designer **PETER NORLIN**
Builder **Albin Marin**
Age Date **01/1981**
Series Date **01/1978**
Offset File **L0016.bof**

HULL

Length Overall **7.770 m**
Maximum Beam **2.524 m**
Draft **1.445 m**
Displacement **1,900 kg**
DLR **5.8849**
IMS Division **Sportboat**
Dynamic Allowance **0.218%**
Age Allowance **0.487%**

PROPELLER

Installation **No Propeller**
Type **N/A**
Diameter **N/A**

CREW

Maximum weight **360 kg**
Minimum weight **270 kg * when applied**
Non Manual Power **No**
Crew Arm Extension

SAIL AREAS (m²)

	Measured	Rated
Mainsail	18.63	18.98
Headsail Luffed	14.53	14.53
Headsail Flying		
Symmetric	40.90	40.90
Asymmetric		

SAIL LIMITATIONS

Headsails **5**
Spinnakers **4**

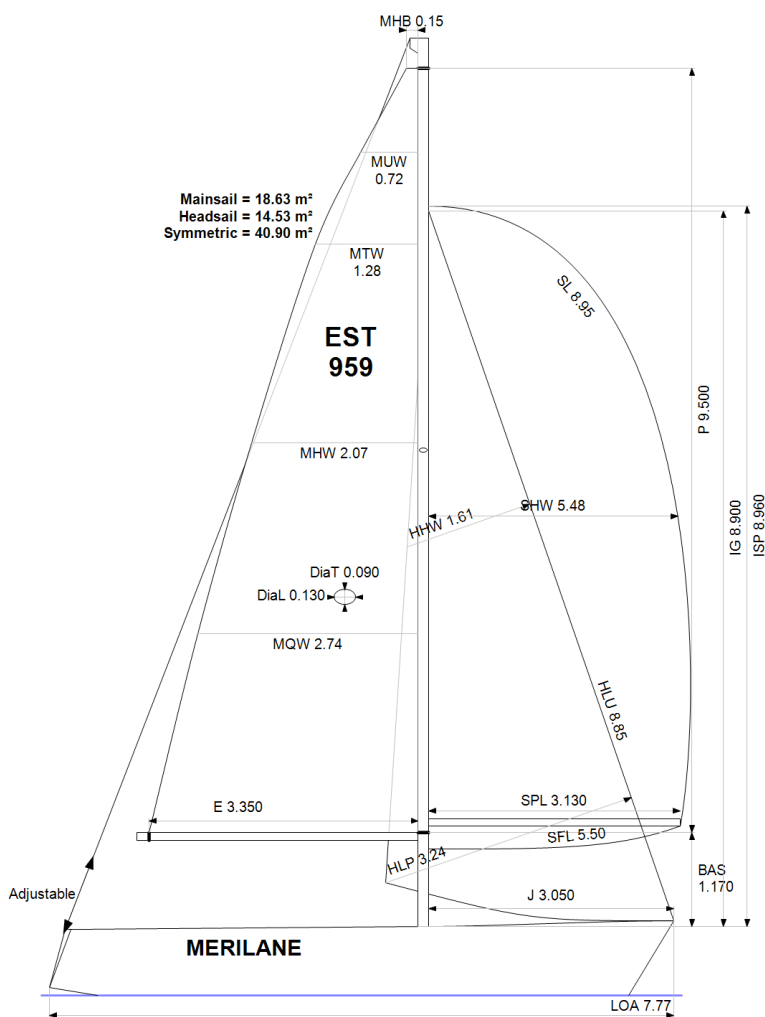
STABILITY

Righting Moment **33.1 kg·m**
Stability Index **N/A**

COMMENTS

kaal koos pãramootoriga 23kg

OWNER



Rated boat velocities in knots

Wind Velocity	6 kt	8 kt	10 kt	12 kt	14 kt	16 kt	20 kt
Beat Angles	43.3°	42.0°	40.9°	38.8°	38.3°	38.6°	39.4°
Beat VMG	2.93	3.51	3.98	4.28	4.38	4.41	4.39
52°	4.48	5.29	5.78	6.03	6.15	6.19	6.20
60°	4.73	5.54	5.94	6.16	6.31	6.38	6.40
75°	4.92	5.71	6.06	6.30	6.51	6.70	6.84
90°	5.01	5.87	6.26	6.52	6.66	6.85	7.27
110°	5.04	5.92	6.33	6.71	7.09	7.39	7.73
120°	4.87	5.81	6.26	6.63	7.04	7.45	8.16
135°	4.40	5.34	6.02	6.37	6.75	7.16	8.10
150°	3.71	4.66	5.50	6.06	6.39	6.74	7.53
Run VMG	3.21	4.04	4.79	5.47	5.99	6.32	7.00
Gybe Angles	148.0°	152.0°	153.0°	170.0°	180.0°	180.0°	180.0°

The owner certifies that he/she understands his/her responsibilities under ORC Rule and Regulations.

Time Allowances in secs/NM							
Wind Velocity	6 kt	8 kt	10 kt	12 kt	14 kt	16 kt	20 kt
Beat VMG	1228.7	1025.5	905.6	840.8	821.1	816.3	820.0
52°	803.9	679.9	622.8	597.3	585.7	581.7	580.7
60°	760.9	649.5	606.3	584.0	570.3	564.2	562.5
75°	731.7	630.1	593.7	571.7	552.7	537.7	526.0
90°	719.0	613.5	574.8	552.4	540.7	525.3	495.5
110°	714.8	607.7	568.4	536.3	507.5	487.4	465.6
120°	738.6	619.3	574.9	543.0	511.3	482.9	441.3
135°	818.5	674.3	598.5	564.9	533.6	502.7	444.2
150°	970.4	772.4	655.0	593.9	563.3	534.2	478.3
Run VMG	1120.5	891.7	752.1	658.5	601.4	569.8	514.4
Selected Courses							
Windward / Leeward	1174.6	958.6	828.8	749.7	711.3	693.0	667.2
All purpose	902.6	749.8	670.0	624.4	598.2	581.3	557.0

Single Number Scoring Options		
Course	Time On Distance	Time On Time
Windward / Leeward	790.2	0.7593
All purpose	647.1	0.9273

Custom scoring options for Estonia

Single Number	Time On Distance	Time On Time
Coastal/Long Distance	704.2	0.8520
Triple Number Coastal/Long Distance Low	826.2	0.7262
Triple Number Coastal/Long Distance Medium	643.5	0.9324
Triple Number Coastal/Long Distance High	576.4	1.0409
Triple Number Windward/Leeward Low	1066.7	0.5625
Triple Number Windward/Leeward Medium	783.9	0.7654
Triple Number Windward/Leeward High	687.9	0.8722

Performance Curve	6 kt	8 kt	10 kt	12 kt	14 kt	16 kt	20 kt
Coastal/Long Distance	1169.2	899.6	750.5	664.4	621.8	588.6	531.3