

GPH = 738.2 **CDL = 6.655**

BOAT

Class **BIRDIE 32**
Designer **Jan Becker**
Builder
Age Date **08/1984**
Series Date **01/1978**
Offset File **BIRD32_n.OFF**

HULL

Length Overall **9.400 m**
Maximum Beam **3.140 m**
Draft **1.657 m**
Displacement **4,020 kg**
DLR **9.2242**
IMS Division **Cruiser/Racer**
Dynamic Allowance **0.535%**
Age Allowance **0.487%**

PROPELLER

Installation **Strut**
Type **Folding 2 blades**
Diameter **0.380m**

CREW

Maximum weight **450 kg**
Minimum weight **338 kg * when applied**
Non Manual Power **No**
Crew Arm Extension

SAIL AREAS (m²)

	Measured	Rated
Mainsail	21.59	21.90
Headsail Luffed	22.37	22.37
Headsail Flying		
Symmetric	52.38	52.38
Asymmetric	49.43	49.43

* 1 asymmetric(s) with SHW/SFL < 85%

SAIL LIMITATIONS

Headsails **1**
Spinnakers **4 * Asymmetric SHALL NOT be tacked on the pole**

STABILITY

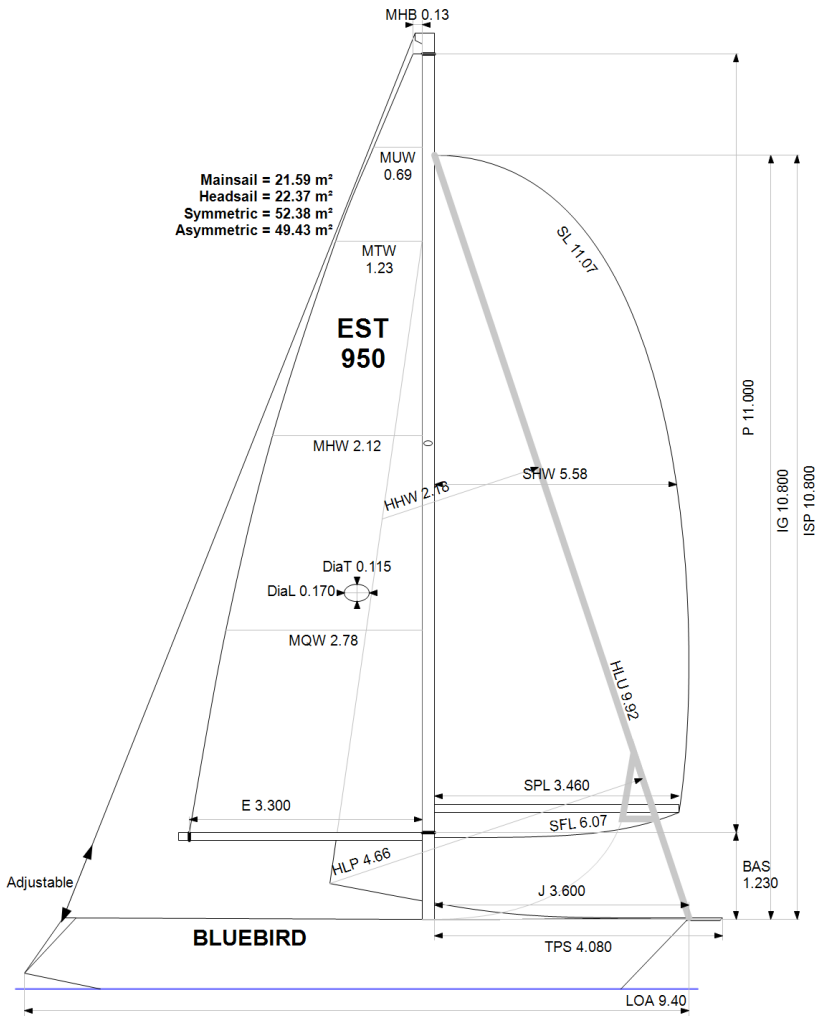
Righting Moment **58.3 kg·m**
Stability Index **N/A**

COMMENTS

ex swe9507

OWNER

The owner certifies that he/she understands his/her responsibilities under ORC Rule and Regulations.



Rated boat velocities in knots

Wind Velocity	6 kt	8 kt	10 kt	12 kt	14 kt	16 kt	20 kt
Beat Angles	44.1°	42.2°	42.4°	42.0°	40.9°	40.7°	41.3°
Beat VMG	2.78	3.33	3.75	4.10	4.32	4.41	4.41
52°	4.29	5.06	5.68	6.06	6.26	6.36	6.40
60°	4.54	5.36	5.94	6.24	6.43	6.54	6.62
75°	4.73	5.58	6.12	6.40	6.59	6.75	6.98
90°	4.83	5.82	6.37	6.66	6.87	6.99	7.19
110°	4.85	5.86	6.40	6.72	7.02	7.31	7.72
120°	4.69	5.70	6.32	6.65	6.95	7.26	7.82
135°	4.26	5.18	5.99	6.43	6.74	7.04	7.65
150°	3.65	4.58	5.38	6.07	6.45	6.73	7.30
Run VMG	3.16	3.98	4.68	5.36	5.97	6.37	6.92
Gybe Angles	148.0°	153.0°	154.0°	161.0°	180.0°	180.0°	180.0°

Time Allowances in secs/NM							
Wind Velocity	6 kt	8 kt	10 kt	12 kt	14 kt	16 kt	20 kt
Beat VMG	1293.3	1080.2	960.0	877.5	833.0	816.3	816.3
52°	839.0	710.8	634.0	594.2	575.4	566.1	562.3
60°	792.3	671.5	606.5	576.5	560.2	550.1	543.5
75°	761.5	644.7	588.1	562.7	546.2	533.2	515.9
90°	745.0	618.8	565.6	540.9	524.3	515.3	500.5
110°	741.7	614.7	562.4	535.4	512.9	492.7	466.6
120°	767.3	632.1	569.4	541.1	518.0	495.7	460.4
135°	845.4	694.5	600.9	559.5	534.4	511.7	470.8
150°	985.6	785.9	669.1	593.3	557.9	534.6	492.9
Run VMG	1138.1	905.4	768.8	671.9	603.4	564.9	520.0
Selected Courses							
Windward / Leeward	1215.7	992.8	864.4	774.7	718.2	690.6	668.2
All purpose	936.3	773.0	684.2	630.7	597.5	579.4	559.1

Single Number Scoring Options		
Course	Time On Distance	Time On Time
Windward / Leeward	811.5	0.7394
All purpose	655.6	0.9153

Custom scoring options for Estonia

Single Number	Time On Distance	Time On Time
Coastal/Long Distance	716.4	0.8375
Triple Number Coastal/Long Distance Low	854.6	0.7021
Triple Number Coastal/Long Distance Medium	652.1	0.9201
Triple Number Coastal/Long Distance High	576.3	1.0411
Triple Number Windward/Leeward Low	1104.2	0.5434
Triple Number Windward/Leeward Medium	808.6	0.7420
Triple Number Windward/Leeward High	689.1	0.8707

Performance Curve	6 kt	8 kt	10 kt	12 kt	14 kt	16 kt	20 kt
Coastal/Long Distance	1208.0	929.7	774.3	674.8	621.6	586.4	534.0