

**GPH = 738.0**    **CDL = 6.302**

**BOAT**

Class **Conrad 25R**  
Designer **Pettersen**  
Builder  
Age Date **01/1982**  
Series Date **01/1978**  
Offset File **C25\_ST.OFF**

**HULL**

Length Overall **7.650 m**  
Maximum Beam **2.756 m**  
Draft **1.536 m**  
Displacement **1,668 kg**  
DLR **7.1645**  
IMS Division **Performance**  
Dynamic Allowance **0.248%**  
Age Allowance **0.487%**

**PROPELLER**

Installation **No Propeller**  
Type **N/A**  
Diameter **N/A**

**CREW**

Maximum weight **450 kg**  
Minimum weight **338 kg \* when applied**  
Non Manual Power **No**  
Crew Arm Extension

**SAIL AREAS (m<sup>2</sup>)**

	Measured	Rated
Mainsail	<b>17.14</b>	<b>17.52</b>
Headsail Luffed	<b>14.98</b>	<b>14.98</b>
Headsail Flying		
Symmetric	<b>31.67</b>	<b>31.67</b>
Asymmetric		

**SAIL LIMITATIONS**

Headsails **5**  
Spinnakers **4**

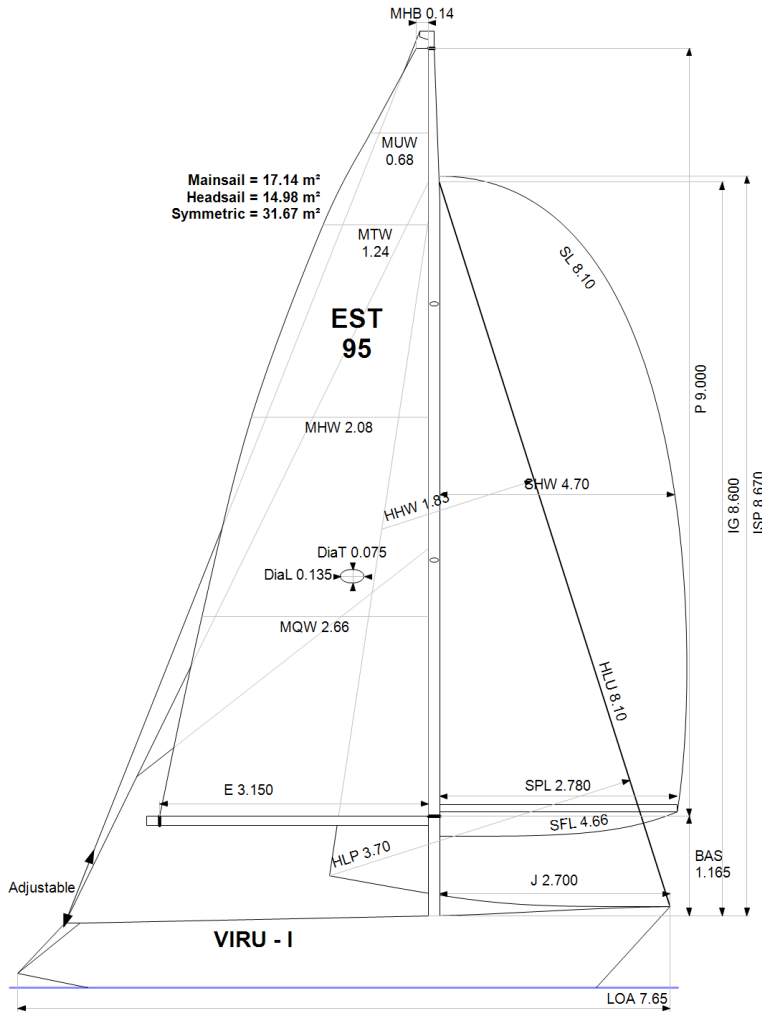
**STABILITY**

Righting Moment **28.6 kg·m**  
Stability Index **N/A**

**COMMENTS**

Boat weight with engine Mercury Sail Power 4.0 hp

**OWNER**



Rated boat velocities in knots

Wind Velocity	6 kt	8 kt	10 kt	12 kt	14 kt	16 kt	20 kt
Beat Angles	41.3°	41.3°	39.8°	37.5°	36.8°	36.8°	38.3°
Beat VMG	3.00	3.56	4.01	4.29	4.39	4.42	4.36
52°	4.52	5.31	5.70	5.91	6.04	6.09	6.10
60°	4.75	5.50	5.83	6.04	6.20	6.29	6.34
75°	4.92	5.61	5.93	6.17	6.39	6.59	6.76
90°	4.85	5.68	6.07	6.38	6.63	6.76	7.12
110°	4.83	5.68	6.08	6.45	6.82	7.15	7.60
120°	4.66	5.56	6.00	6.33	6.69	7.06	7.78
135°	4.20	5.12	5.74	6.09	6.43	6.78	7.51
150°	3.61	4.52	5.31	5.81	6.13	6.44	7.11
Run VMG	3.13	3.92	4.63	5.28	5.77	6.08	6.70
Gybe Angles	149.0°	153.0°	156.0°	180.0°	180.0°	180.0°	180.0°

The owner certifies that he/she understands his/her responsibilities under ORC Rule and Regulations.

Time Allowances in secs/NM							
Wind Velocity	6 kt	8 kt	10 kt	12 kt	14 kt	16 kt	20 kt
Beat VMG	1199.8	1010.6	898.4	838.8	820.2	814.6	826.5
52°	796.0	677.5	631.1	609.2	596.4	591.2	590.1
60°	757.5	654.4	617.1	596.3	580.7	572.0	567.9
75°	732.2	641.7	606.6	583.3	563.0	546.5	532.3
90°	742.0	634.2	592.9	564.4	543.3	532.4	506.0
110°	745.7	634.3	591.9	558.5	528.2	503.4	473.8
120°	772.8	647.9	600.4	568.7	538.1	509.9	462.8
135°	856.9	703.0	626.8	590.8	560.1	530.8	479.0
150°	996.5	796.0	678.1	619.9	587.6	558.9	506.4
Run VMG	1150.7	917.5	777.2	681.7	624.3	591.8	537.2
Selected Courses							
Windward / Leeward	1175.3	964.0	837.8	760.3	722.3	703.2	681.8
All purpose	911.7	761.3	683.6	636.9	611.3	594.0	571.4

Single Number Scoring Options		
Course	Time On Distance	Time On Time
Windward / Leeward	799.7	0.7503
All purpose	659.8	0.9094

### Custom scoring options for Estonia

Single Number	Time On Distance	Time On Time
Coastal/Long Distance	716.5	0.8374
Triple Number Coastal/Long Distance Low	836.5	0.7173
Triple Number Coastal/Long Distance Medium	656.5	0.9140
Triple Number Coastal/Long Distance High	589.9	1.0172
Triple Number Windward/Leeward Low	1069.7	0.5609
Triple Number Windward/Leeward Medium	793.5	0.7561
Triple Number Windward/Leeward High	700.0	0.8572

Performance Curve	6 kt	8 kt	10 kt	12 kt	14 kt	16 kt	20 kt
Coastal/Long Distance	1172.8	907.8	762.2	678.1	634.9	602.2	545.9