

GPH = 694.1 **CDL = 7.180**

BOAT

Class **Inferno 29**
Designer
Builder
Age Date
Series Date **01/1979**
Offset File **G1057.bof**

HULL

Length Overall **8.800 m**
Maximum Beam **2.514 m**
Draft **1.518 m**
Displacement **2,600 kg**
DLR **6.6330**
IMS Division **Cruiser/Racer**
Dynamic Allowance **0.030%**
Age Allowance **0.487%**

PROPELLER

Installation **Shaft exposed**
Type **Feathering 2 blades**
Diameter **0.371m**

CREW

Maximum weight **475 kg**
Minimum weight **356 kg * when applied**
Non Manual Power **No**
Crew Arm Extension

SAIL AREAS (m²)

	Measured	Rated
Mainsail	22.59	23.05
Headsail Luffed	22.66	22.66
Headsail Flying		
Symmetric	50.76	50.76
Asymmetric		

SAIL LIMITATIONS

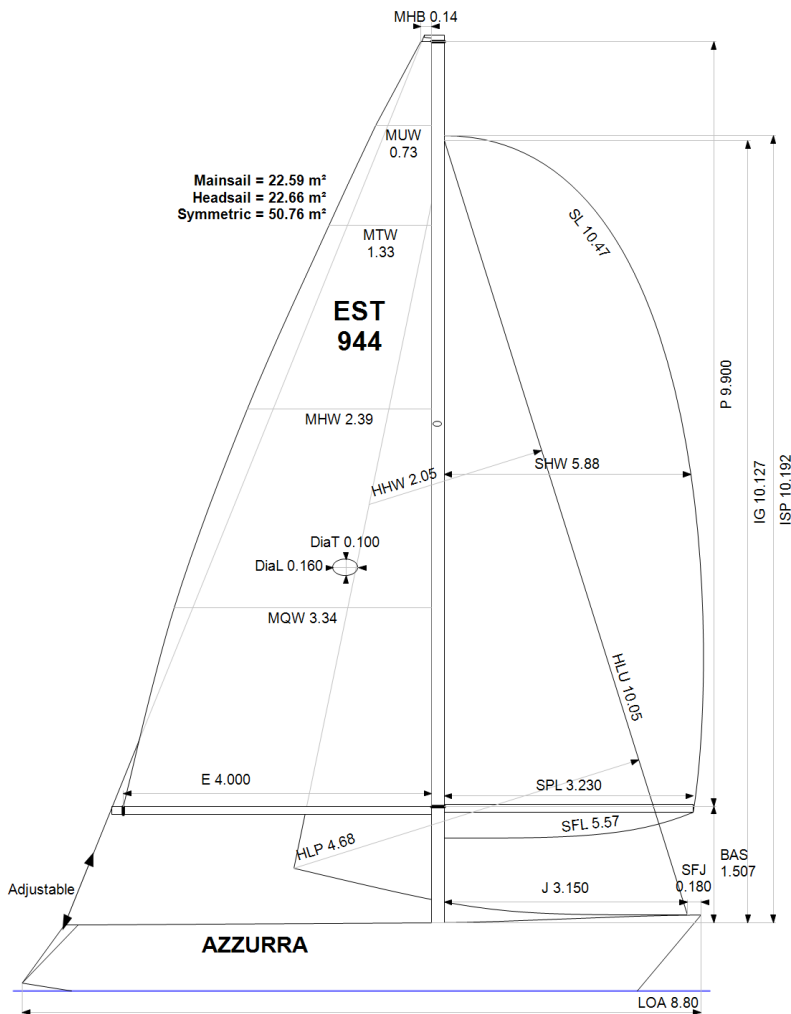
Headsails **5**
Spinnakers **4**

STABILITY

Righting Moment **41.0 kg·m**
Stability Index **N/A**

OWNER

The owner certifies that he/she understands his/her responsibilities under ORC Rule and Regulations.



Rated boat velocities in knots

Wind Velocity	6 kt	8 kt	10 kt	12 kt	14 kt	16 kt	20 kt
Beat Angles	42.8°	42.0°	40.9°	39.4°	39.0°	38.6°	39.4°
Beat VMG	3.12	3.75	4.24	4.47	4.56	4.59	4.55
52°	4.78	5.65	6.13	6.33	6.40	6.44	6.43
60°	5.06	5.90	6.28	6.48	6.57	6.62	6.63
75°	5.28	6.07	6.40	6.63	6.81	6.94	7.03
90°	5.21	6.06	6.47	6.69	6.92	7.16	7.49
110°	5.16	6.14	6.57	6.92	7.28	7.53	7.88
120°	5.00	6.02	6.51	6.87	7.27	7.67	8.28
135°	4.53	5.55	6.26	6.63	6.99	7.40	8.31
150°	3.82	4.81	5.70	6.30	6.64	6.98	7.75
Run VMG	3.31	4.17	4.95	5.63	6.19	6.55	7.21
Gybe Angles	147.0°	151.0°	152.0°	163.5°	180.0°	180.0°	180.0°

Time Allowances in secs/NM							
Wind Velocity	6 kt	8 kt	10 kt	12 kt	14 kt	16 kt	20 kt
Beat VMG	1152.3	960.3	848.1	805.1	789.9	785.0	791.5
52°	753.3	636.7	587.1	568.8	562.2	559.4	560.0
60°	710.8	610.4	573.3	556.0	547.9	543.9	542.9
75°	681.4	593.5	562.6	543.4	528.6	519.1	512.1
90°	690.4	594.3	556.1	538.3	520.5	503.0	480.6
110°	697.4	586.4	547.9	520.0	494.7	478.2	457.0
120°	719.5	597.6	553.2	524.3	495.4	469.2	434.6
135°	794.3	648.8	575.1	543.1	515.0	486.5	433.4
150°	941.7	748.1	632.1	571.4	542.3	516.1	464.6
Run VMG	1087.4	864.1	727.6	639.0	581.2	549.8	499.3
Selected Courses							
Windward / Leeward	1119.8	912.2	787.8	722.0	685.6	667.4	645.4
All purpose	860.9	714.2	638.4	600.3	576.2	560.9	540.5

Single Number Scoring Options		
Course	Time On Distance	Time On Time
Windward / Leeward	757.5	0.7921
All purpose	620.6	0.9668

Custom scoring options for Estonia

Single Number	Time On Distance	Time On Time
Coastal/Long Distance	675.7	0.8880
Triple Number Coastal/Long Distance Low	787.6	0.7618
Triple Number Coastal/Long Distance Medium	616.5	0.9733
Triple Number Coastal/Long Distance High	557.1	1.0770
Triple Number Windward/Leeward Low	1016.1	0.5905
Triple Number Windward/Leeward Medium	750.7	0.7993
Triple Number Windward/Leeward High	663.7	0.9040

Performance Curve	6 kt	8 kt	10 kt	12 kt	14 kt	16 kt	20 kt
Coastal/Long Distance	1116.6	857.3	714.5	638.9	599.1	567.5	516.0