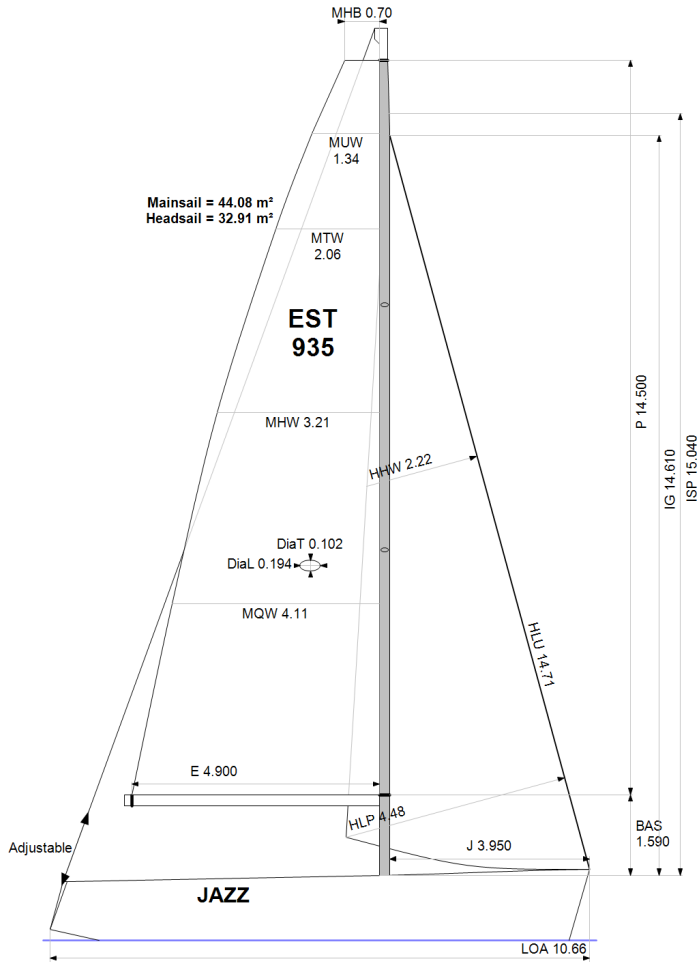


GPH = **652.4** CDL = **8.755**



BOAT

Class **First 35**
Designer **Bruce Farr**
Builder **Beneteau**
Age Date **04/2010**
Series Date **02/2009**
Offset File **FIRST35-EST935.off**

HULL

Length Overall **10.660 m**
Maximum Beam **3.636 m**
Draft **2.037 m**
Displacement **5,400 kg**
DLR **6.2671**
IMS Division **Cruiser/Racer**
Dynamic Allowance **0.139%**
Age Allowance **0.390%**

PROPELLER

Installation **Strut**
Type **Folding 2 blades**
Diameter **0.410m**

CREW

Maximum weight **170 kg**
Minimum weight **120 kg** * when applied
Non Manual Power **No**
Crew Arm Extension

SAIL AREAS (m²)

	Measured	Rated
Mainsail	44.08	45.02
Headsail Luffed	32.91	32.91
Headsail Flying		

Symmetric
Asymmetric

SAIL LIMITATIONS

Headsails **5**
Spinnakers **0** * Spinnaker pole aboard

STABILITY

Righting Moment **137.9 kg·m**
Stability Index **N/A**

OWNER

The owner certifies that he/she understands his/her responsibilities under ORC Rule and Regulations.

Rated boat velocities in knots							
Wind Velocity	6 kt	8 kt	10 kt	12 kt	14 kt	16 kt	20 kt
Beat Angles	42.8°	41.3°	40.9°	40.5°	40.5°	40.5°	41.6°
Beat VMG	3.52	4.22	4.63	4.79	4.84	4.87	4.84
52°	5.35	6.33	6.84	7.01	7.07	7.10	7.17
60°	5.65	6.62	7.08	7.25	7.32	7.35	7.43
75°	5.90	6.83	7.27	7.50	7.64	7.72	7.76
90°	5.87	6.83	7.31	7.61	7.87	8.09	8.34
110°	5.28	6.40	7.12	7.50	7.83	8.19	8.81
120°	4.99	6.07	6.88	7.34	7.67	8.03	8.81
135°	4.27	5.35	6.27	6.97	7.38	7.71	8.46
150°	3.61	4.67	5.58	6.40	7.02	7.41	8.10
Run VMG	3.12	4.06	4.92	5.71	6.45	7.02	7.73
Gybe Angles	150.0°	158.0°	168.0°	173.0°	175.0°	177.0°	178.0°

Time Allowances in secs/NM							
Wind Velocity	6 kt	8 kt	10 kt	12 kt	14 kt	16 kt	20 kt
Beat VMG	1021.6	853.1	777.1	752.3	744.4	739.8	743.8
52°	672.3	568.5	526.2	513.7	508.9	507.2	502.0
60°	637.2	543.7	508.5	496.7	492.0	490.1	484.3
75°	609.9	526.9	495.5	479.9	471.0	466.4	464.0
90°	613.7	527.1	492.6	473.3	457.7	445.0	431.8
110°	681.3	562.8	505.7	480.2	459.9	439.6	408.6
120°	720.8	593.6	523.3	490.7	469.2	448.3	408.5
135°	842.8	672.9	574.1	516.8	487.8	466.7	425.6
150°	998.2	771.5	645.5	562.7	512.8	485.7	444.4
Run VMG	1152.6	885.8	731.5	630.3	558.5	513.0	465.8
Selected Courses							
Windward / Leeward	1087.1	869.5	754.3	691.3	651.4	626.4	604.8
All purpose	823.7	673.8	598.6	559.9	536.9	521.7	502.5

Single Number Scoring Options		
Course	Time On Distance	Time On Time
Windward / Leeward	722.7	0.8302
All purpose	580.9	1.0328

Custom scoring options for Estonia

Single Number	Time On Distance	Time On Time
Coastal/Long Distance	636.0	0.9434
Triple Number Coastal/Long Distance Low	748.8	0.8013
Triple Number Coastal/Long Distance Medium	576.6	1.0406
Triple Number Coastal/Long Distance High	518.3	1.1576
Triple Number Windward/Leeward Low	978.3	0.6133
Triple Number Windward/Leeward Medium	717.2	0.8366
Triple Number Windward/Leeward High	624.5	0.9607

Performance Curve	6 kt	8 kt	10 kt	12 kt	14 kt	16 kt	20 kt
Coastal/Long Distance	1093.7	817.4	677.8	600.1	558.2	526.5	475.0

