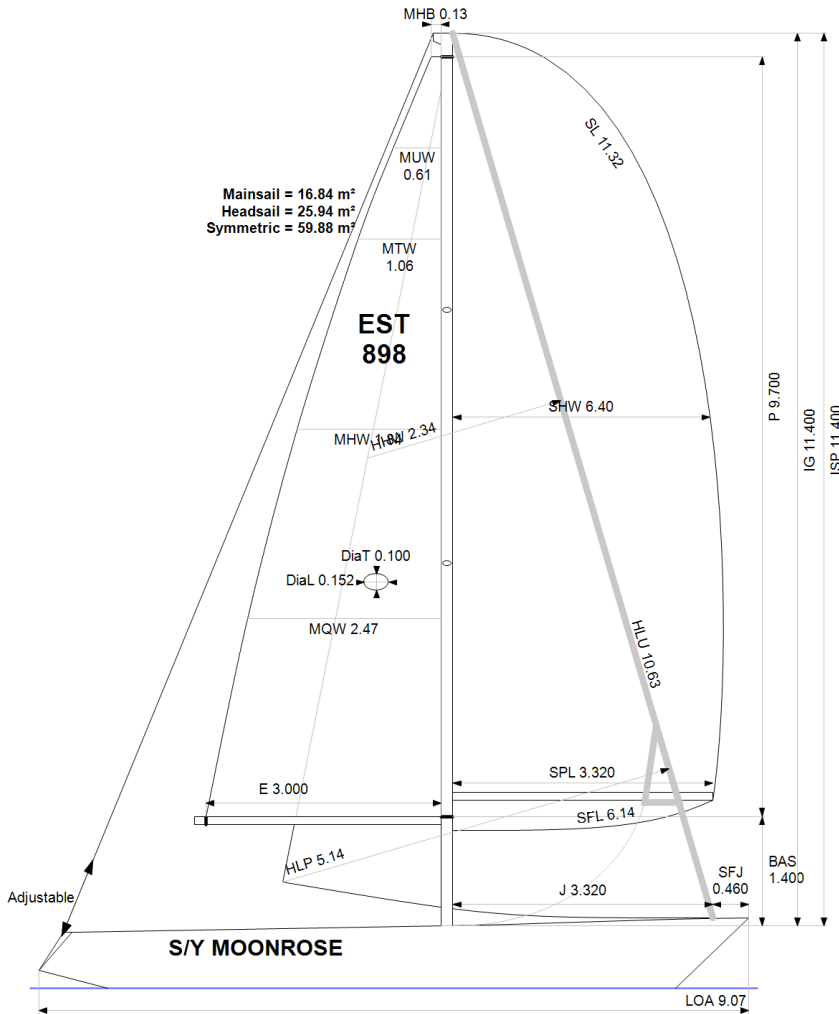


GPH = 726.5 **CDL = 6.668**



BOAT

Class **Scampi 30**
Designer **Peter Norlin**
Builder **Albin**
Age Date **01/1975**
Series Date **01/1969**
Offset File **scampi.off**

HULL

Length Overall **9.070 m**
Maximum Beam **3.014 m**
Draft **1.653 m**
Displacement **3,300 kg**
DLR **9.0696**
IMS Division **Cruiser/Racer**
Dynamic Allowance **0.403%**
Age Allowance **0.487%**

PROPELLER

Installation **Shaft exposed**
Type **Folding 2 blades**
Diameter **0.350m**

CREW

Maximum weight **160 kg**
Minimum weight **120 kg * when applied**
Non Manual Power **No**
Crew Arm Extension

SAIL AREAS (m²)

	Measured	Rated
Mainsail	16.84	17.05
Headsail Luffed	25.94	25.94
Headsail Flying		
Symmetric	59.88	59.88
Asymmetric		

SAIL LIMITATIONS

Headsails **1** * Woven polyester sails
Spinnakers **4**

STABILITY

Righting Moment **50.9 kg·m**
Stability Index **N/A**

OWNER

The owner certifies that he/she understands his/her responsibilities under ORC Rule and Regulations.

Rated boat velocities in knots							
Wind Velocity	6 kt	8 kt	10 kt	12 kt	14 kt	16 kt	20 kt
Beat Angles	42.4°	40.9°	41.3°	41.3°	40.9°	40.5°	41.4°
Beat VMG	2.95	3.49	3.89	4.18	4.31	4.36	4.32
52°	4.46	5.22	5.79	6.07	6.22	6.28	6.29
60°	4.70	5.49	5.99	6.24	6.39	6.48	6.51
75°	4.89	5.70	6.14	6.39	6.56	6.71	6.88
90°	4.84	5.74	6.26	6.44	6.63	6.82	7.14
110°	4.92	5.90	6.39	6.69	6.95	7.10	7.34
120°	4.80	5.81	6.34	6.67	6.98	7.27	7.61
135°	4.41	5.37	6.11	6.49	6.79	7.12	7.72
150°	3.79	4.72	5.55	6.16	6.49	6.78	7.38
Run VMG	3.28	4.09	4.82	5.46	6.03	6.39	6.95
Gybe Angles	147.5°	151.0°	151.5°	161.0°	180.0°	180.0°	180.0°

Time Allowances in secs/NM							
Wind Velocity	6 kt	8 kt	10 kt	12 kt	14 kt	16 kt	20 kt
Beat VMG	1222.0	1031.0	924.8	861.7	834.9	825.1	832.6
52°	806.7	689.7	621.9	592.9	578.7	573.0	571.9
60°	766.7	656.0	601.1	577.2	563.5	555.7	552.8
75°	736.8	631.2	586.0	563.8	548.6	536.4	523.5
90°	743.1	627.0	575.4	558.9	543.2	528.2	504.0
110°	731.0	609.8	563.6	538.0	518.2	507.2	490.4
120°	749.5	619.9	567.8	540.0	516.0	494.9	473.4
135°	816.7	670.4	589.0	555.0	529.9	505.8	466.3
150°	950.4	762.8	648.8	584.7	554.6	531.3	487.5
Run VMG	1097.4	880.5	747.5	659.0	597.4	563.3	518.1
Selected Courses							
Windward / Leeward	1159.7	955.8	836.2	760.4	716.2	694.2	675.3
All purpose	901.9	751.2	670.7	626.6	599.6	584.1	566.6

Single Number Scoring Options		
Course	Time On Distance	Time On Time
Windward / Leeward	795.3	0.7544
All purpose	649.0	0.9245

Custom scoring options for Estonia

Single Number	Time On Distance	Time On Time
Coastal/Long Distance	706.3	0.8494
Triple Number Coastal/Long Distance Low	826.6	0.7259
Triple Number Coastal/Long Distance Medium	645.0	0.9303
Triple Number Coastal/Long Distance High	581.4	1.0320
Triple Number Windward/Leeward Low	1057.8	0.5672
Triple Number Windward/Leeward Medium	790.8	0.7587
Triple Number Windward/Leeward High	692.6	0.8663

Performance Curve	6 kt	8 kt	10 kt	12 kt	14 kt	16 kt	20 kt
Coastal/Long Distance	1153.5	897.9	754.2	668.5	623.4	590.4	541.1