

GPH = 766.0 **CDL = 6.265**

BOAT

Class **FENIX**
Designer
Builder **MAXI**
Age Date **01/1984**
Series Date **01/1981**
Offset File **fenix3.off**

HULL

Length Overall **8.300 m**
Maximum Beam **2.894 m**
Draft **1.573 m**
Displacement **2,958 kg**
DLR **8.5807**
IMS Division **Cruiser/Racer**
Dynamic Allowance **0.457%**
Age Allowance **0.487%**

PROPELLER

Installation **Strut**
Type **Folding 2 blades**
Diameter **0.340m**

CREW

Maximum weight **360 kg**
Minimum weight **270 kg * when applied**
Non Manual Power **No**
Crew Arm Extension

SAIL AREAS (m²)

	Measured	Rated
Mainsail	20.26	20.55
Headsail Luffed	17.34	17.34
Headsail Flying		
Symmetric	40.84	40.84
Asymmetric		

SAIL LIMITATIONS

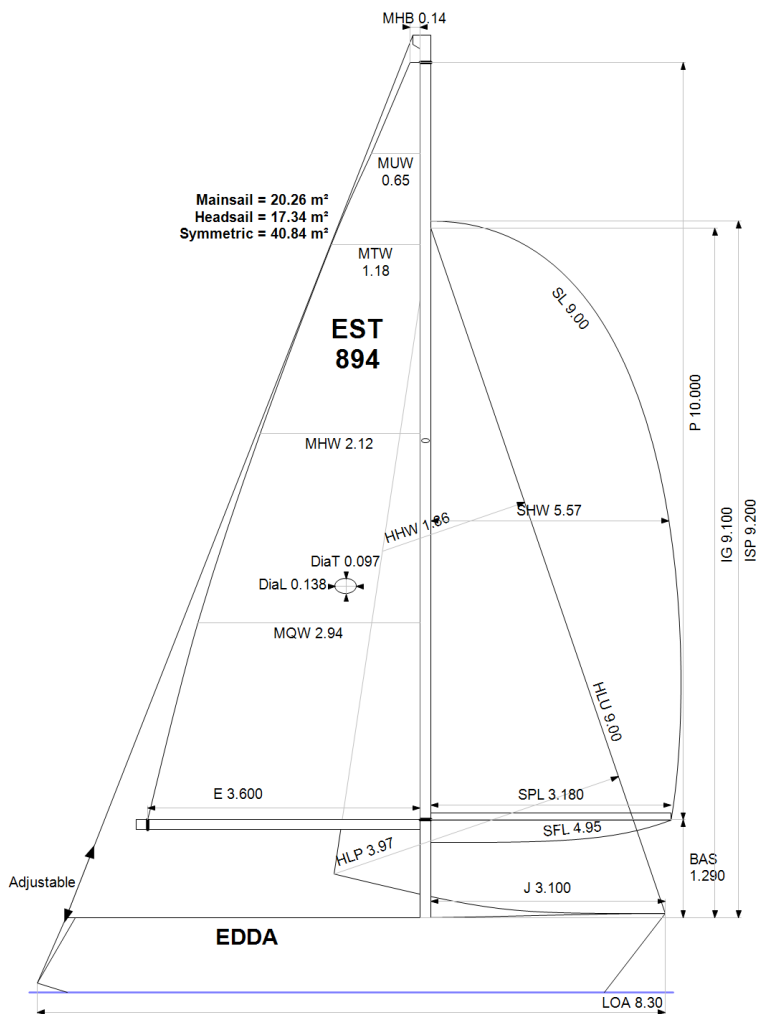
Headsails **5** * Woven polyester sails
Spinnakers **4**

STABILITY

Righting Moment **50.2 kg·m**
Stability Index **N/A**

OWNER

The owner certifies that he/she understands his/her responsibilities under ORC Rule and Regulations.



Rated boat velocities in knots

Wind Velocity	6 kt	8 kt	10 kt	12 kt	14 kt	16 kt	20 kt
Beat Angles	44.6°	42.9°	42.4°	42.0°	40.5°	40.1°	41.3°
Beat VMG	2.65	3.20	3.61	3.97	4.20	4.26	4.20
52°	4.11	4.87	5.46	5.86	6.07	6.15	6.15
60°	4.36	5.15	5.72	6.04	6.23	6.34	6.37
75°	4.55	5.38	5.91	6.18	6.38	6.56	6.74
90°	4.65	5.60	6.15	6.44	6.63	6.73	7.04
110°	4.68	5.65	6.18	6.51	6.83	7.13	7.50
120°	4.52	5.50	6.10	6.43	6.73	7.07	7.67
135°	4.04	4.98	5.78	6.21	6.51	6.82	7.47
150°	3.47	4.39	5.21	5.87	6.24	6.52	7.12
Run VMG	3.01	3.82	4.53	5.22	5.81	6.19	6.74
Gybe Angles	149.0°	153.5°	156.0°	170.0°	180.0°	180.0°	180.0°

Time Allowances in secs/NM							
Wind Velocity	6 kt	8 kt	10 kt	12 kt	14 kt	16 kt	20 kt
Beat VMG	1357.1	1126.1	998.4	907.0	856.9	844.7	857.2
52°	876.8	739.5	659.3	614.5	593.4	585.5	585.1
60°	825.8	698.8	629.8	596.5	578.0	568.1	565.1
75°	791.5	668.6	609.7	582.3	563.9	549.2	534.1
90°	774.0	642.3	585.6	558.9	543.0	534.6	511.7
110°	769.3	636.7	582.1	553.3	527.4	504.7	479.9
120°	795.8	655.1	590.1	560.3	534.6	509.5	469.6
135°	892.0	723.4	622.9	579.7	552.9	527.5	481.6
150°	1036.7	819.2	691.5	613.3	576.8	552.1	505.4
Run VMG	1197.1	942.8	795.2	690.2	619.8	581.8	534.2
Selected Courses							
Windward / Leeward	1277.1	1034.5	896.8	798.6	738.3	713.3	695.7
All purpose	980.2	804.3	709.6	651.7	616.0	598.2	579.0

Single Number Scoring Options		
Course	Time On Distance	Time On Time
Windward / Leeward	840.0	0.7143
All purpose	678.8	0.8839

Custom scoring options for Estonia

Single Number	Time On Distance	Time On Time
Coastal/Long Distance	742.0	0.8086
Triple Number Coastal/Long Distance Low	892.3	0.6724
Triple Number Coastal/Long Distance Medium	674.8	0.8892
Triple Number Coastal/Long Distance High	595.5	1.0076
Triple Number Windward/Leeward Low	1155.8	0.5191
Triple Number Windward/Leeward Medium	835.9	0.7178
Triple Number Windward/Leeward High	712.9	0.8416

Performance Curve	6 kt	8 kt	10 kt	12 kt	14 kt	16 kt	20 kt
Coastal/Long Distance	1269.1	968.4	803.2	697.0	640.8	605.6	550.7