

**GPH = 789.9**    **CDL = 5.743**

**BOAT**

Class **BECKER 27**  
 Designer  
 Builder **BK Marin**  
 Age Date **01/1978**  
 Series Date **01/1974**  
 Offset File **Becker27 2013-05-11\_3.off**

**HULL**

Length Overall **8.120 m**  
 Maximum Beam **2.774 m**  
 Draft **1.429 m**  
 Displacement **2,730 kg**  
 DLR **10.8368**  
 IMS Division **Cruiser/Racer**  
 Dynamic Allowance **0.633%**  
 Age Allowance **0.487%**

**PROPELLER**

Installation **Shaft exposed**  
 Type **Folding 2 blades**  
 Diameter **0.340m**

**CREW**

Maximum weight **357 kg**  
 Minimum weight **268 kg \* when applied**  
 Non Manual Power **No**  
 Crew Arm Extension

**SAIL AREAS (m<sup>2</sup>)**

	Measured	Rated
Mainsail	<b>13.09</b>	<b>13.44</b>
Headsail Luffed	<b>19.47</b>	<b>19.47</b>
Headsail Flying		
Symmetric	<b>44.81</b>	<b>44.81</b>
Asymmetric		

**SAIL LIMITATIONS**

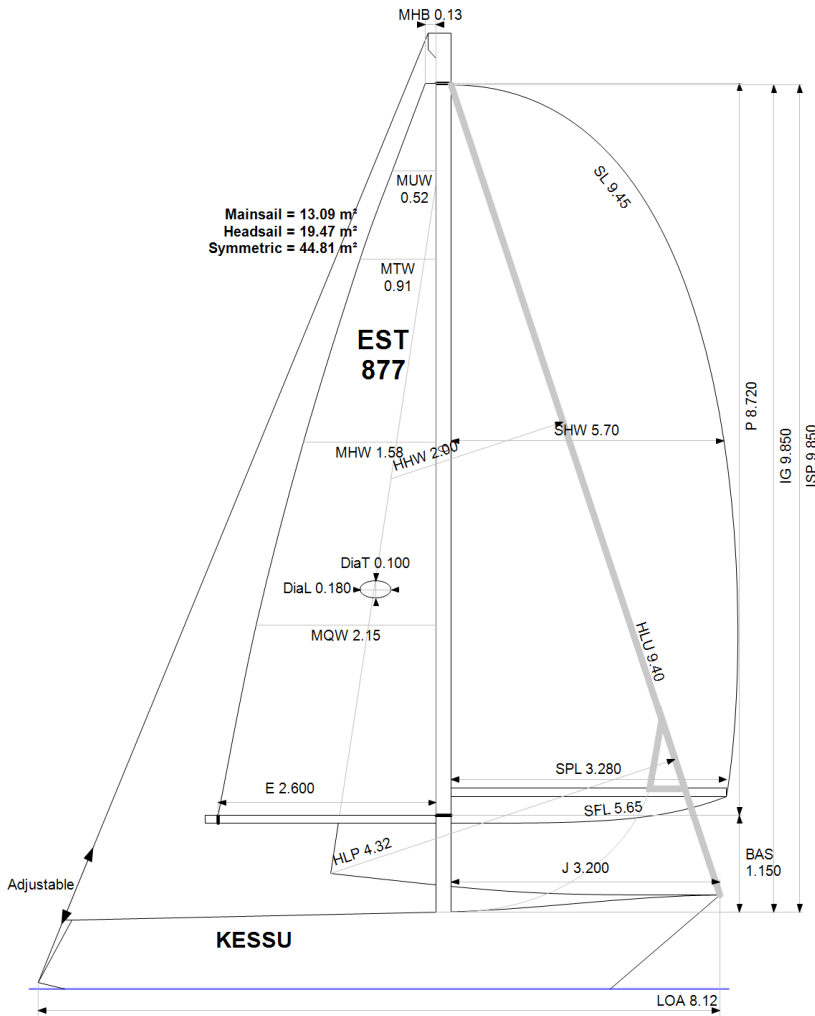
Headsails **1 \* Woven polyester sails**  
 Spinnakers **4**

**STABILITY**

Righting Moment **42.1 kg·m**  
 Stability Index **N/A**

**OWNER**

*The owner certifies that he/she understands his/her responsibilities under ORC Rule and Regulations.*



Rated boat velocities in knots

Wind Velocity	6 kt	8 kt	10 kt	12 kt	14 kt	16 kt	20 kt
Beat Angles	43.9°	42.0°	42.4°	42.0°	40.1°	39.4°	40.1°
Beat VMG	2.59	3.10	3.47	3.81	4.06	4.19	4.19
52°	3.98	4.70	5.26	5.60	5.80	5.93	5.98
60°	4.21	4.97	5.49	5.77	5.95	6.08	6.19
75°	4.38	5.17	5.65	5.90	6.09	6.26	6.52
90°	4.43	5.35	5.86	6.13	6.31	6.41	6.69
110°	4.54	5.47	5.94	6.24	6.54	6.82	7.12
120°	4.42	5.36	5.88	6.19	6.49	6.80	7.30
135°	4.04	4.93	5.64	6.01	6.29	6.60	7.18
150°	3.50	4.38	5.13	5.71	6.02	6.29	6.85
Run VMG	3.03	3.80	4.47	5.10	5.63	5.96	6.48
Gybe Angles	149.0°	153.0°	154.0°	168.0°	180.0°	180.0°	180.0°

Time Allowances in secs/NM							
Wind Velocity	6 kt	8 kt	10 kt	12 kt	14 kt	16 kt	20 kt
Beat VMG	1390.4	1162.9	1036.5	945.3	886.1	859.1	858.8
52°	903.8	765.2	684.0	642.6	620.4	607.5	601.8
60°	854.4	724.4	655.6	624.4	605.5	592.1	582.0
75°	821.5	696.6	636.8	609.9	591.5	575.5	551.7
90°	813.1	672.8	614.1	587.0	570.9	562.0	538.1
110°	793.5	658.5	606.2	576.6	550.1	528.0	505.8
120°	814.5	672.1	612.1	581.6	554.5	529.3	493.4
135°	891.6	729.8	637.9	599.5	572.1	545.6	501.4
150°	1027.7	822.7	701.8	630.5	597.6	572.4	525.3
Run VMG	1186.7	947.7	805.2	705.8	639.5	604.4	555.8
Selected Courses							
Windward / Leeward	1288.6	1055.3	920.9	825.5	762.8	731.8	707.3
All purpose	998.7	825.6	733.3	677.3	640.2	618.6	595.4

Single Number Scoring Options		
Course	Time On Distance	Time On Time
Windward / Leeward	862.9	0.6953
All purpose	702.0	0.8547

### Custom scoring options for Estonia

Single Number	Time On Distance	Time On Time
Coastal/Long Distance	765.7	0.7836
Triple Number Coastal/Long Distance Low	912.1	0.6578
Triple Number Coastal/Long Distance Medium	699.1	0.8583
Triple Number Coastal/Long Distance High	615.3	0.9752
Triple Number Windward/Leeward Low	1171.9	0.5120
Triple Number Windward/Leeward Medium	860.8	0.6970
Triple Number Windward/Leeward High	730.4	0.8215

Performance Curve	6 kt	8 kt	10 kt	12 kt	14 kt	16 kt	20 kt
Coastal/Long Distance	1278.4	988.8	827.2	723.6	665.5	626.7	570.5