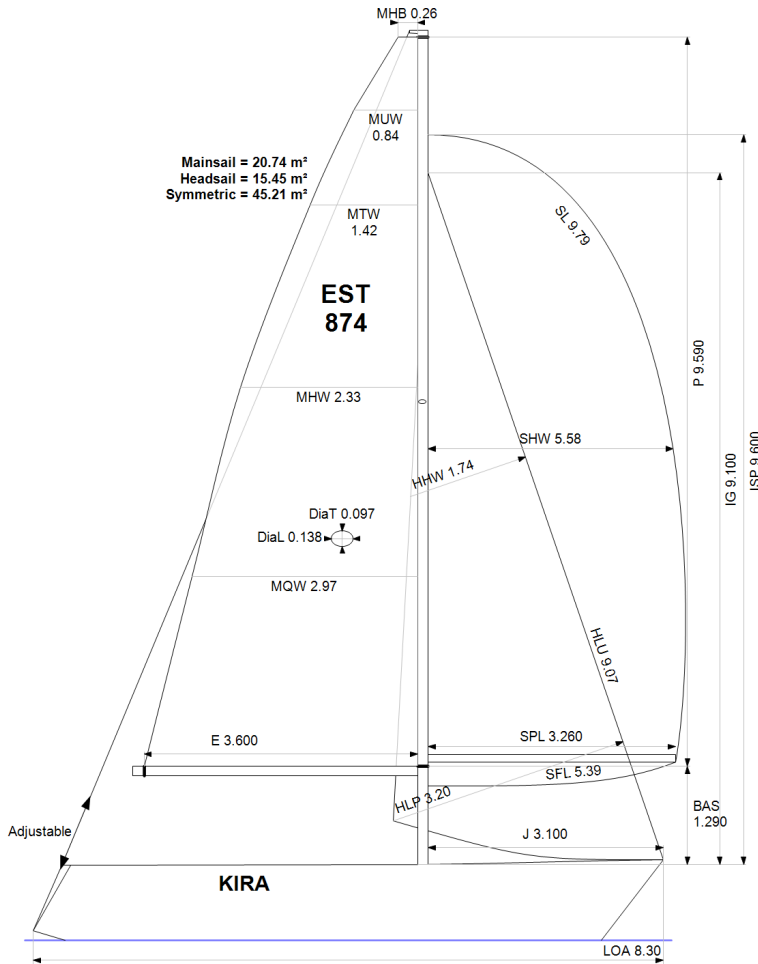


GPH = 765.3 **CDL = 6.165**



BOAT

Class **FENIX**
Designer
Builder **Rootsi**
Age Date **01/1983**
Series Date **01/1981**
Offset File **fenix3.off**

HULL

Length Overall **8.300 m**
Maximum Beam **2.894 m**
Draft **1.562 m**
Displacement **2,842 kg**
DLR **8.3396**
IMS Division **Cruiser/Racer**
Dynamic Allowance **0.408%**
Age Allowance **0.487%**

PROPELLER

Installation **Strut**
Type **Folding 2 blades**
Diameter **0.340m**

CREW

Maximum weight **190 kg**
Minimum weight **120 kg** * when applied
Non Manual Power **No**
Crew Arm Extension

SAIL AREAS (m²)

	Measured	Rated
Mainsail	20.74	21.24
Headsail Luffed	15.45	15.45
Headsail Flying		
Symmetric	45.21	45.21
Asymmetric		

SAIL LIMITATIONS

Headsails **5**
Spinnakers **4**

STABILITY

Righting Moment **48.6 kg·m**
Stability Index **N/A**

OWNER

The owner certifies that he/she understands his/her responsibilities under ORC Rule and Regulations.

Rated boat velocities in knots							
Wind Velocity	6 kt	8 kt	10 kt	12 kt	14 kt	16 kt	20 kt
Beat Angles	44.3°	42.0°	42.0°	42.2°	42.0°	42.0°	43.1°
Beat VMG	2.66	3.20	3.61	3.91	4.02	4.03	3.97
52°	4.09	4.84	5.45	5.81	5.95	5.98	5.97
60°	4.34	5.10	5.70	6.01	6.15	6.20	6.19
75°	4.54	5.34	5.88	6.17	6.35	6.48	6.55
90°	4.70	5.65	6.16	6.35	6.46	6.63	6.94
110°	4.77	5.74	6.24	6.56	6.85	7.03	7.28
120°	4.63	5.61	6.17	6.49	6.82	7.15	7.56
135°	4.17	5.11	5.89	6.29	6.60	6.94	7.61
150°	3.57	4.50	5.32	5.96	6.31	6.61	7.25
Run VMG	3.09	3.91	4.63	5.31	5.89	6.25	6.83
Gybe Angles	148.0°	153.0°	154.0°	166.0°	180.0°	180.0°	180.0°

Time Allowances in secs/NM

Wind Velocity	6 kt	8 kt	10 kt	12 kt	14 kt	16 kt	20 kt
Beat VMG	1354.2	1123.4	997.0	921.6	896.5	894.0	906.1
52°	879.6	744.2	661.0	619.6	605.1	601.9	603.3
60°	829.7	705.3	632.1	599.1	584.9	580.5	581.7
75°	793.4	673.9	611.9	583.6	566.6	555.6	549.2
90°	765.6	637.0	584.7	566.7	557.4	542.9	518.9
110°	754.1	627.4	577.4	549.2	525.3	512.0	494.6
120°	777.2	641.8	583.7	554.3	527.9	503.8	476.3
135°	863.9	704.4	611.1	572.6	545.3	518.6	473.4
150°	1008.9	799.9	677.1	603.6	570.3	544.9	496.7
Run VMG	1165.0	921.8	777.8	677.7	611.6	576.3	526.9
Selected Courses							
Windward / Leeward	1259.6	1022.6	887.4	799.6	754.0	735.2	716.5
All purpose	968.0	796.8	704.5	652.7	625.0	610.7	593.5

Single Number Scoring Options

Course	Time On Distance	Time On Time
Windward / Leeward	842.8	0.7120
All purpose	680.5	0.8816

Custom scoring options for Estonia

Single Number	Time On Distance	Time On Time
Coastal/Long Distance	742.6	0.8080
Triple Number Coastal/Long Distance Low	882.4	0.6800
Triple Number Coastal/Long Distance Medium	675.1	0.8888
Triple Number Coastal/Long Distance High	607.8	0.9871
Triple Number Windward/Leeward Low	1141.1	0.5258
Triple Number Windward/Leeward Medium	836.1	0.7176
Triple Number Windward/Leeward High	732.9	0.8187

Performance Curve	6 kt	8 kt	10 kt	12 kt	14 kt	16 kt	20 kt
Coastal/Long Distance	1250.2	957.3	796.0	698.3	650.5	616.4	561.2

