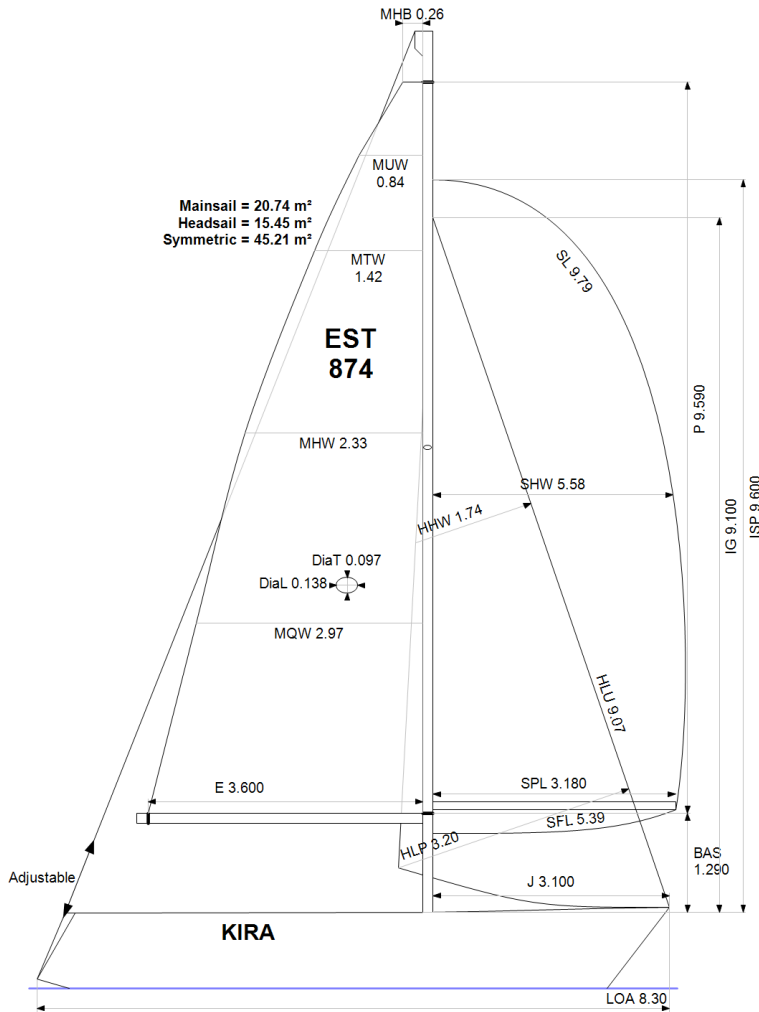


**GPH = 757.8**    **CDL = 6.281**



**BOAT**

Class **FENIX**  
Designer  
Builder **Rootsi**  
Age Date **01/1983**  
Series Date **01/1981**  
Offset File **fenix3.off**

**HULL**

Length Overall **8.300 m**  
Maximum Beam **2.894 m**  
Draft **1.562 m**  
Displacement **2,842 kg**  
DLR **8.3396**  
IMS Division **Cruiser/Racer**  
Dynamic Allowance **0.408%**  
Age Allowance **0.487%**

**PROPELLER**

Installation **Strut**  
Type **Folding 2 blades**  
Diameter **0.340m**

**CREW**

Maximum weight **450 kg**  
Minimum weight **338 kg \* when applied**  
Non Manual Power **No**  
Crew Arm Extension

**SAIL AREAS (m²)**

	Measured	Rated
Mainsail	<b>20.74</b>	<b>21.24</b>
Headsail Luffed	<b>15.45</b>	<b>15.45</b>
Headsail Flying		
Symmetric	<b>45.21</b>	<b>45.21</b>
Asymmetric		

**SAIL LIMITATIONS**

Headsails **5**  
Spinnakers **4**

**STABILITY**

Righting Moment **48.6 kg·m**  
Stability Index **N/A**

**OWNER**

*The owner certifies that he/she understands his/her responsibilities under ORC Rule and Regulations.*

Rated boat velocities in knots							
Wind Velocity	6 kt	8 kt	10 kt	12 kt	14 kt	16 kt	20 kt
Beat Angles	44.6°	43.1°	42.8°	42.0°	40.1°	39.8°	40.9°
Beat VMG	2.66	3.20	3.62	3.99	4.24	4.31	4.25
52°	4.11	4.90	5.49	5.88	6.09	6.18	6.19
60°	4.37	5.18	5.74	6.05	6.25	6.37	6.41
75°	4.55	5.40	5.93	6.20	6.40	6.59	6.80
90°	4.73	5.70	6.20	6.49	6.66	6.76	7.10
110°	4.78	5.75	6.25	6.58	6.92	7.23	7.57
120°	4.63	5.61	6.17	6.50	6.85	7.20	7.80
135°	4.16	5.11	5.89	6.29	6.60	6.94	7.63
150°	3.56	4.49	5.31	5.96	6.31	6.61	7.25
Run VMG	3.08	3.90	4.62	5.32	5.89	6.25	6.83
Gybe Angles	148.5°	153.0°	154.0°	168.0°	180.0°	180.0°	180.0°

Time Allowances in secs/NM							
Wind Velocity	6 kt	8 kt	10 kt	12 kt	14 kt	16 kt	20 kt
Beat VMG	1354.4	1123.3	994.8	902.0	849.1	835.8	846.2
52°	875.4	734.9	655.6	612.8	591.2	582.5	581.4
60°	824.7	694.5	627.0	595.2	576.3	565.5	561.6
75°	790.9	667.1	607.1	580.9	562.6	546.7	529.4
90°	760.9	632.1	580.6	555.0	540.8	532.6	507.2
110°	753.7	625.7	576.1	547.0	519.9	497.7	475.7
120°	778.2	641.5	583.3	553.5	525.9	500.2	461.5
135°	865.6	704.8	611.1	572.5	545.3	518.4	472.0
150°	1010.7	800.9	677.5	603.6	570.3	545.0	496.8
Run VMG	1167.0	923.0	778.4	677.1	611.1	576.0	527.0
Selected Courses							
Windward / Leeward	1260.7	1023.2	886.6	789.6	730.1	705.9	686.6
All purpose	967.3	794.6	702.4	645.8	610.3	592.2	572.0

Single Number Scoring Options		
Course	Time On Distance	Time On Time
Windward / Leeward	830.5	0.7225
All purpose	671.9	0.8929

### Custom scoring options for Estonia

Single Number	Time On Distance	Time On Time
Coastal/Long Distance	734.4	0.8170
Triple Number Coastal/Long Distance Low	880.9	0.6811
Triple Number Coastal/Long Distance Medium	668.2	0.8979
Triple Number Coastal/Long Distance High	589.2	1.0184
Triple Number Windward/Leeward Low	1142.0	0.5254
Triple Number Windward/Leeward Medium	826.6	0.7259
Triple Number Windward/Leeward High	704.7	0.8514

Performance Curve	6 kt	8 kt	10 kt	12 kt	14 kt	16 kt	20 kt
Coastal/Long Distance	1251.4	957.0	794.6	690.5	634.7	599.5	544.2