

GPH = **645.2** CDL = **8.858**

BOAT

Class **DEHLER 33 CLASSIC**
Designer **J/V**
Builder **DHELER**
Age Date **04/1996**
Series Date **04/1995**
Offset File **DEH33-EST.off**

HULL

Length Overall **9.990 m**
Maximum Beam **2.984 m**
Draft **2.203 m**
Displacement **4,055 kg**
DLR **5.0752**
IMS Division **Cruiser/Racer**
Dynamic Allowance **0.294%**
Age Allowance **0.487%**

PROPELLER

Installation **Strut**
Type **Feathering 2 blades**
Diameter **0.385m**

CREW

Maximum weight **450 kg**
Minimum weight **338 kg * when applied**
Non Manual Power **No**
Crew Arm Extension

SAIL AREAS (m²)

	Measured	Rated
Mainsail	30.11	30.72
Headsail Luffed	25.93	25.93
Headsail Flying		
Symmetric	61.54	61.54
Asymmetric		

SAIL LIMITATIONS

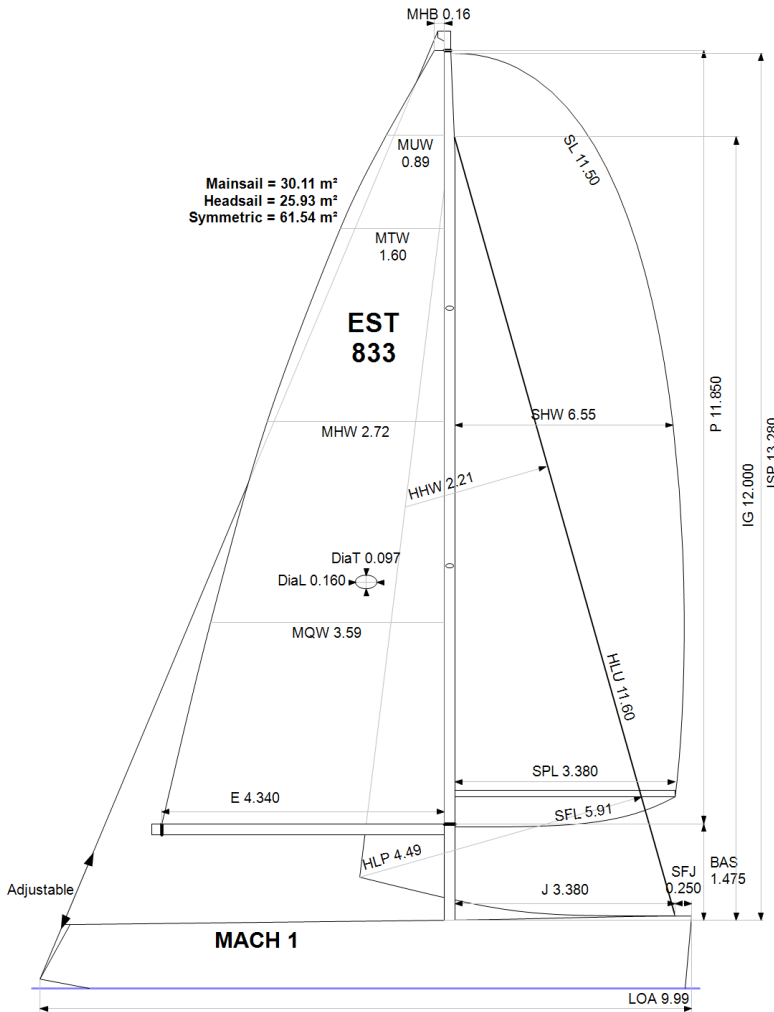
Headsails **5**
Spinnakers **4**

STABILITY

Righting Moment **80.9 kg·m**
Stability Index **N/A**

OWNER

The owner certifies that he/she understands his/her responsibilities under ORC Rule and Regulations.



Rated boat velocities in knots

Wind Velocity	6 kt	8 kt	10 kt	12 kt	14 kt	16 kt	20 kt
Beat Angles	42.0°	40.5°	39.8°	38.4°	37.9°	37.5°	37.5°
Beat VMG	3.35	4.05	4.60	4.91	5.02	5.06	5.10
52°	5.07	6.02	6.66	6.94	7.04	7.09	7.11
60°	5.35	6.29	6.85	7.11	7.23	7.29	7.32
75°	5.57	6.50	6.99	7.27	7.47	7.62	7.73
90°	5.50	6.48	7.06	7.31	7.57	7.84	8.25
110°	5.42	6.56	7.15	7.53	7.90	8.13	8.55
120°	5.24	6.40	7.07	7.47	7.90	8.35	8.98
135°	4.70	5.83	6.71	7.19	7.57	8.02	9.07
150°	3.97	5.04	5.98	6.74	7.19	7.55	8.41
Run VMG	3.44	4.37	5.18	5.91	6.55	7.05	7.77
Gybe Angles	145.0°	149.5°	152.0°	157.0°	180.0°	180.0°	180.0°

Time Allowances in secs/NM							
Wind Velocity	6 kt	8 kt	10 kt	12 kt	14 kt	16 kt	20 kt
Beat VMG	1075.0	888.9	782.9	733.7	717.6	711.3	706.4
52°	709.9	598.2	540.4	518.8	511.4	508.1	506.2
60°	673.4	572.1	525.8	506.6	497.9	494.0	492.1
75°	646.0	553.6	515.3	495.4	481.7	472.5	465.6
90°	654.6	555.3	509.6	492.7	475.3	459.0	436.4
110°	664.0	548.8	503.3	477.8	455.8	442.6	421.3
120°	687.5	562.8	509.5	482.0	456.0	431.4	400.9
135°	765.7	618.0	536.9	500.4	475.3	449.0	397.0
150°	907.6	714.2	602.1	534.0	500.8	477.1	428.2
Run VMG	1048.0	824.7	694.4	608.9	549.5	510.7	463.6
Selected Courses							
Windward / Leeward	1061.5	856.8	738.7	671.3	633.5	611.0	585.0
All purpose	816.9	670.4	592.9	552.8	528.3	513.1	491.0

Single Number Scoring Options		
Course	Time On Distance	Time On Time
Windward / Leeward	704.9	0.8512
All purpose	573.8	1.0456

Custom scoring options for Estonia

Single Number	Time On Distance	Time On Time
Coastal/Long Distance	625.7	0.9590
Triple Number Coastal/Long Distance Low	743.7	0.8068
Triple Number Coastal/Long Distance Medium	569.9	1.0529
Triple Number Coastal/Long Distance High	508.6	1.1797
Triple Number Windward/Leeward Low	959.1	0.6256
Triple Number Windward/Leeward Medium	699.8	0.8574
Triple Number Windward/Leeward High	606.9	0.9887

Performance Curve	6 kt	8 kt	10 kt	12 kt	14 kt	16 kt	20 kt
Coastal/Long Distance	1060.1	805.7	667.0	589.1	549.5	518.8	470.3