

GPH = 753.3 **CDL = 6.356**

BOAT

Class **Netta H-30**
Designer **Hans Groop**
Builder
Age Date **01/1982**
Series Date **01/1975**
Offset File **NETTA H-30.off**

HULL

Length Overall **9.060 m**
Maximum Beam **2.520 m**
Draft **1.486 m**
Displacement **3,000 kg**
DLR **8.5384**
IMS Division **Cruiser/Racer**
Dynamic Allowance **0.391%**
Age Allowance **0.487%**

PROPELLER

Installation **Shaft exposed**
Type **Solid 2 blades**
Diameter **0.295m**

CREW

Maximum weight **170 kg**
Minimum weight **120 kg * when applied**
Non Manual Power
Crew Arm Extension

SAIL AREAS (m²)

	Measured	Rated
Mainsail	16.81	17.02
Headsail Luffed	20.29	20.29
Headsail Flying		
Symmetric	46.87	48.42
Asymmetric		

SAIL LIMITATIONS

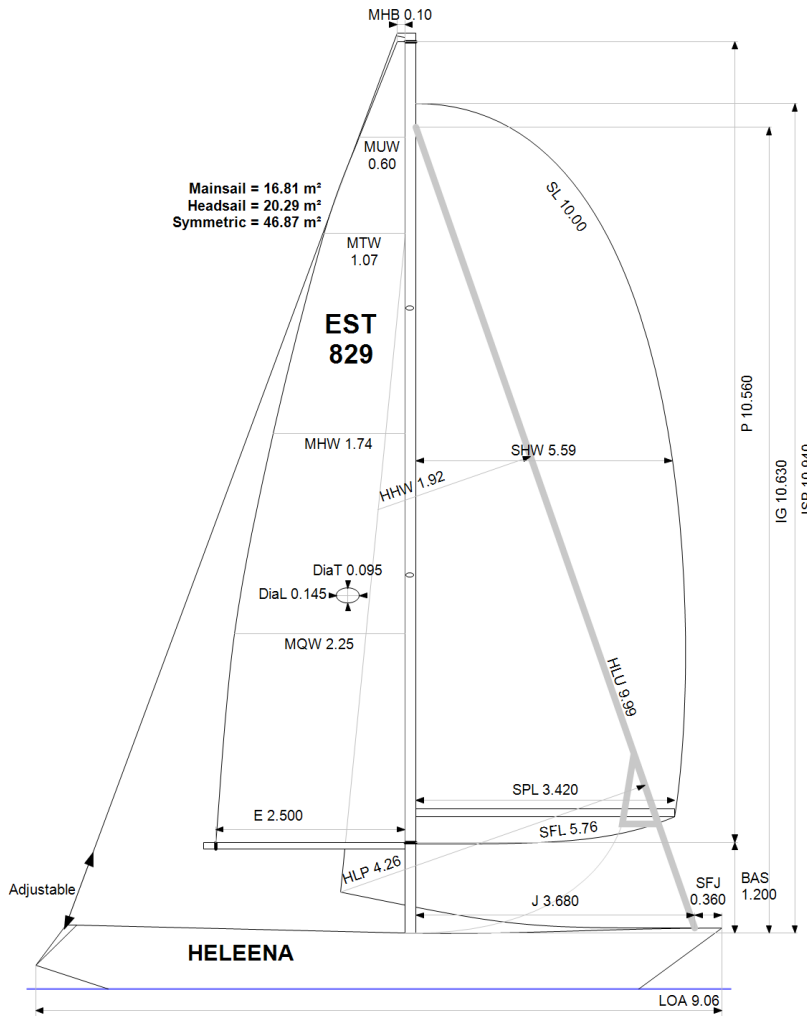
Headsails **1**
Spinnakers **4**

STABILITY

Righting Moment **41.7 kg·m**
Stability Index **N/A**

OWNER

The owner certifies that he/she understands his/her responsibilities under ORC Rule and Regulations.



Rated boat velocities in knots

Wind Velocity	6 kt	8 kt	10 kt	12 kt	14 kt	16 kt	20 kt
Beat Angles	43.5°	41.3°	41.6°	42.4°	42.0°	42.0°	42.4°
Beat VMG	2.73	3.29	3.69	3.98	4.09	4.12	4.08
52°	4.18	4.94	5.57	5.91	6.05	6.10	6.08
60°	4.42	5.21	5.82	6.11	6.26	6.31	6.32
75°	4.60	5.44	6.00	6.28	6.45	6.57	6.66
90°	4.67	5.65	6.18	6.34	6.52	6.69	6.97
110°	4.79	5.81	6.33	6.63	6.84	6.98	7.17
120°	4.67	5.70	6.28	6.60	6.90	7.18	7.49
135°	4.23	5.19	5.98	6.40	6.71	7.04	7.69
150°	3.63	4.57	5.39	6.05	6.41	6.70	7.34
Run VMG	3.14	3.96	4.68	5.34	5.94	6.33	6.90
Gybe Angles	148.0°	151.5°	152.0°	160.0°	180.0°	180.0°	180.0°

Time Allowances in secs/NM							
Wind Velocity	6 kt	8 kt	10 kt	12 kt	14 kt	16 kt	20 kt
Beat VMG	1317.7	1093.8	974.5	905.4	880.4	873.9	881.4
52°	861.3	729.2	646.2	608.6	594.8	590.6	592.1
60°	815.4	691.6	618.6	588.8	575.4	570.4	569.9
75°	783.2	662.2	600.0	573.5	558.4	548.0	540.2
90°	770.6	636.8	582.7	568.1	552.5	537.9	516.3
110°	751.1	619.4	568.4	542.7	526.7	515.8	502.4
120°	771.3	632.0	573.1	545.2	522.0	501.6	480.9
135°	850.3	693.8	601.5	562.6	536.5	511.4	468.2
150°	991.7	788.2	667.9	595.1	561.3	536.9	490.7
Run VMG	1145.1	909.3	769.1	674.1	606.6	569.1	521.5
Selected Courses							
Windward / Leeward	1231.4	1001.6	871.8	789.8	743.5	721.5	701.4
All purpose	951.7	782.7	692.5	644.0	616.6	601.8	585.0

Single Number Scoring Options		
Course	Time On Distance	Time On Time
Windward / Leeward	828.9	0.7238
All purpose	670.3	0.8951

Custom scoring options for Estonia

Single Number	Time On Distance	Time On Time
Coastal/Long Distance	731.0	0.8208
Triple Number Coastal/Long Distance Low	867.2	0.6919
Triple Number Coastal/Long Distance Medium	664.9	0.9024
Triple Number Coastal/Long Distance High	599.2	1.0014
Triple Number Windward/Leeward Low	1116.5	0.5374
Triple Number Windward/Leeward Medium	823.2	0.7289
Triple Number Windward/Leeward High	719.5	0.8339

Performance Curve	6 kt	8 kt	10 kt	12 kt	14 kt	16 kt	20 kt
Coastal/Long Distance	1222.7	938.7	782.2	688.9	641.2	607.3	555.3