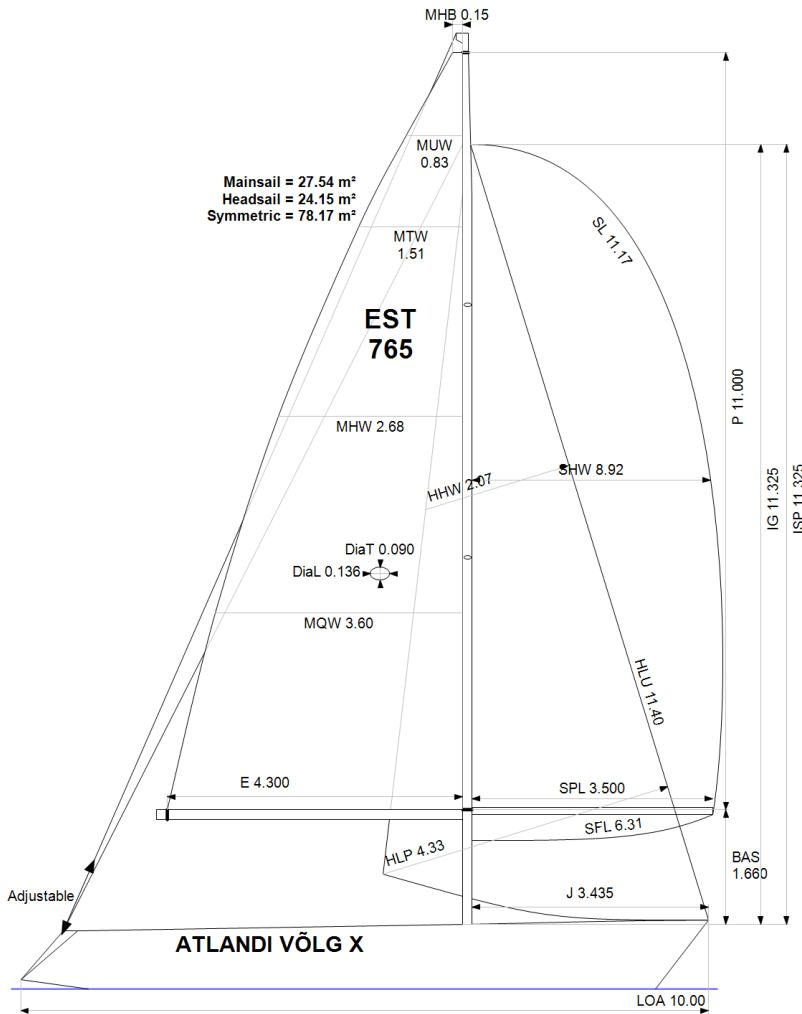


GPH = **639.0** CDL = **8.366**



**BOAT**

Class **X-99**  
Designer **NIELS JEPPESEN**  
Builder **X-YACHTS**  
Age Date **01/1990**  
Series Date **04/1985**  
Offset File **x99.OD.off**

**HULL**

Length Overall **10.000 m**  
Maximum Beam **2.990 m**  
Draft **1.788 m**  
Displacement **2,981 kg**  
DLR **4.9663**  
IMS Division **Cruiser/Racer**  
Dynamic Allowance **0.180%**  
Age Allowance **0.487%**

**PROPELLER**

Installation **Strut**  
Type **Folding 2 blades**  
Diameter **0.356m**

**CREW**

Maximum weight **555 kg**  
Minimum weight **416 kg \* when applied**  
Non Manual Power **No**  
Crew Arm Extension

**SAIL AREAS (m²)**

	Measured	Rated
Mainsail	<b>27.54</b>	<b>28.14</b>
Headsail Luffed	<b>24.15</b>	<b>24.15</b>
Headsail Flying		
Symmetric	<b>78.17</b>	<b>78.17</b>
Asymmetric		

**SAIL LIMITATIONS**

Headsails **5**  
Spinnakers **4**

**STABILITY**

Righting Moment **60.7 kg·m**  
Stability Index **112.5**

**OWNER**

*The owner certifies that he/she understands his/her responsibilities under ORC Rule and Regulations.*

Rated boat velocities in knots							
Wind Velocity	6 kt	8 kt	10 kt	12 kt	14 kt	16 kt	20 kt
Beat Angles	42.8°	41.4°	40.1°	38.6°	38.4°	38.3°	38.3°
Beat VMG	3.31	4.04	4.59	4.85	4.95	5.00	5.04
52°	5.09	6.07	6.63	6.87	6.97	7.02	7.07
60°	5.40	6.34	6.80	7.05	7.18	7.26	7.30
75°	5.63	6.53	6.95	7.25	7.51	7.70	7.85
90°	5.54	6.57	7.03	7.29	7.63	7.98	8.46
110°	5.62	6.71	7.23	7.70	8.07	8.34	8.91
120°	5.46	6.61	7.17	7.70	8.26	8.78	9.50
135°	4.87	6.07	6.89	7.36	7.90	8.51	10.11
150°	4.07	5.16	6.18	6.90	7.33	7.82	8.99
Run VMG	3.52	4.47	5.35	6.10	6.68	7.12	8.02
Gybe Angles	145.0°	149.0°	149.0°	157.8°	180.0°	180.0°	180.0°

Time Allowances in secs/NM							
Wind Velocity	6 kt	8 kt	10 kt	12 kt	14 kt	16 kt	20 kt
Beat VMG	1086.5	892.0	784.4	742.7	726.8	720.4	713.8
52°	706.7	593.4	543.3	524.2	516.8	513.1	509.5
60°	666.3	568.1	529.3	510.8	501.3	496.2	493.2
75°	639.4	551.0	518.2	496.9	479.4	467.8	458.7
90°	649.9	547.7	512.1	493.7	471.6	451.3	425.3
110°	640.3	536.6	497.6	467.4	446.3	431.7	403.8
120°	659.9	544.5	501.8	467.6	435.8	410.3	378.9
135°	738.5	593.1	522.8	489.1	455.7	423.2	356.0
150°	885.0	698.2	582.4	521.7	490.9	460.4	400.4
Run VMG	1021.9	806.2	672.5	590.3	539.1	505.3	448.9
Selected Courses							
Windward / Leeward	1054.2	849.1	728.4	666.5	633.0	612.9	581.4
All purpose	806.9	661.5	587.6	549.6	524.7	507.8	480.3

Single Number Scoring Options		
Course	Time On Distance	Time On Time
Windward / Leeward	700.2	0.8569
All purpose	568.6	1.0552

### Custom scoring options for Estonia

Single Number	Time On Distance	Time On Time
Coastal/Long Distance	620.3	0.9672
Triple Number Coastal/Long Distance Low	734.2	0.8172
Triple Number Coastal/Long Distance Medium	565.3	1.0613
Triple Number Coastal/Long Distance High	501.7	1.1959
Triple Number Windward/Leeward Low	951.6	0.6305
Triple Number Windward/Leeward Medium	694.0	0.8646
Triple Number Windward/Leeward High	606.1	0.9900

Performance Curve	6 kt	8 kt	10 kt	12 kt	14 kt	16 kt	20 kt
Coastal/Long Distance	1051.0	797.2	659.2	585.7	545.7	512.7	459.4