

GPH = 746.8 **CDL = 6.468**

BOAT

Class **ALBIN BALLAD**
Designer **R. MAGNUSON**
Builder **ALBIN**
Age Date **01/1972**
Series Date **01/1971**
Offset File **G1013.BOF**

HULL

Length Overall **9.155 m**
Maximum Beam **2.942 m**
Draft **1.593 m**
Displacement **3,836 kg**
DLR **10.4696**
IMS Division **Cruiser/Racer**
Dynamic Allowance **0.616%**
Age Allowance **0.487%**

PROPELLER

Installation **Shaft exposed**
Type **Folding 2 blades**
Diameter **0.430m**

CREW

Maximum weight **360 kg**
Minimum weight **270 kg * when applied**
Non Manual Power **No**
Crew Arm Extension

SAIL AREAS (m²)

	Measured	Rated
Mainsail	17.02	17.21
Headsail Luffed	28.17	28.17
Headsail Flying		
Symmetric	59.78	59.78
Asymmetric		

SAIL LIMITATIONS

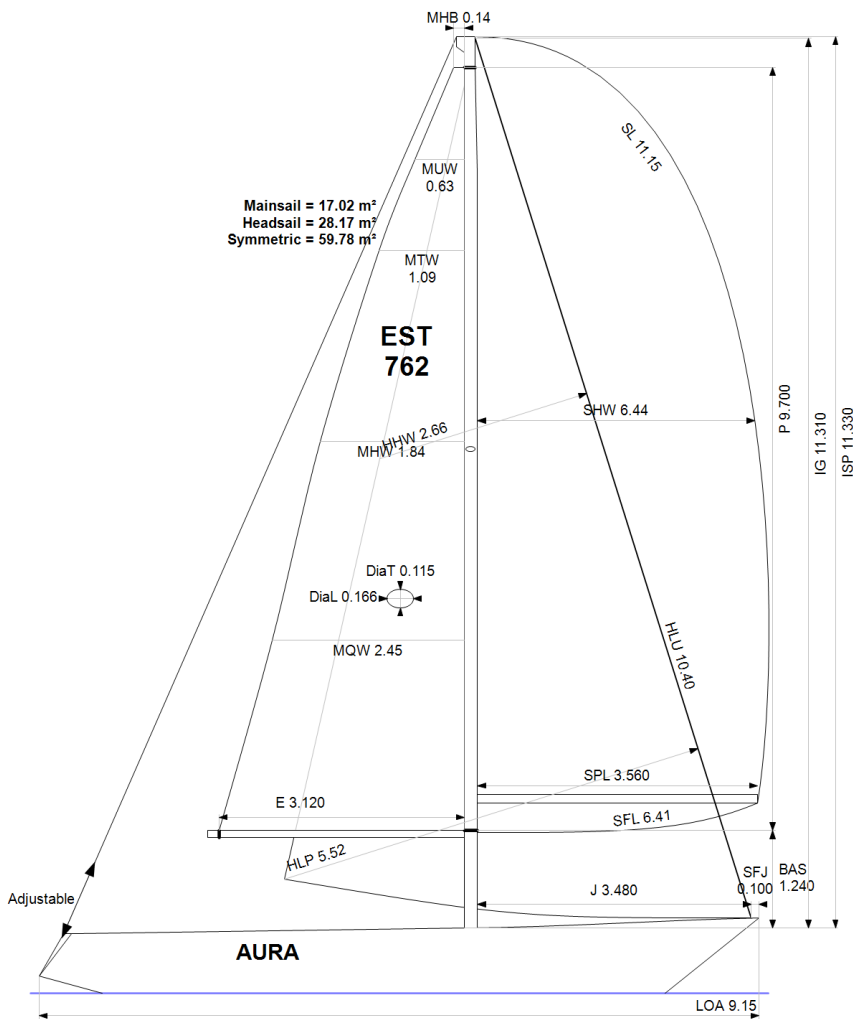
Headsails **5** * Woven polyester sails
Spinnakers **4**

STABILITY

Righting Moment **55.3 kg·m**
Stability Index **N/A**

OWNER

The owner certifies that he/she understands his/her responsibilities under ORC Rule and Regulations.



Rated boat velocities in knots

Wind Velocity	6 kt	8 kt	10 kt	12 kt	14 kt	16 kt	20 kt
Beat Angles	43.5°	42.4°	42.0°	42.0°	41.3°	40.9°	41.3°
Beat VMG	2.79	3.33	3.74	4.07	4.26	4.34	4.36
52°	4.29	5.04	5.63	5.98	6.17	6.26	6.31
60°	4.54	5.32	5.87	6.16	6.33	6.44	6.52
75°	4.72	5.56	6.05	6.31	6.49	6.65	6.87
90°	4.67	5.57	6.17	6.45	6.57	6.73	7.08
110°	4.74	5.73	6.28	6.59	6.88	7.12	7.38
120°	4.60	5.61	6.22	6.55	6.86	7.16	7.63
135°	4.22	5.16	5.95	6.36	6.66	6.96	7.56
150°	3.63	4.55	5.36	6.01	6.37	6.65	7.21
Run VMG	3.15	3.94	4.65	5.30	5.89	6.28	6.81
Gybe Angles	148.0°	152.0°	152.0°	159.5°	180.0°	180.0°	180.0°

Time Allowances in secs/NM							
Wind Velocity	6 kt	8 kt	10 kt	12 kt	14 kt	16 kt	20 kt
Beat VMG	1288.5	1081.4	963.6	884.6	845.9	830.1	826.4
52°	838.4	714.3	639.2	601.8	583.8	575.1	570.8
60°	792.6	676.1	613.4	584.8	568.7	558.6	551.9
75°	762.7	648.0	595.5	571.0	554.4	541.3	523.8
90°	771.4	646.7	583.8	558.1	547.9	534.5	508.6
110°	760.2	627.9	573.3	545.9	523.6	505.6	488.1
120°	781.9	641.2	578.8	549.3	525.2	503.1	471.9
135°	853.1	698.2	604.6	565.6	540.4	516.9	476.3
150°	990.9	791.2	672.2	598.5	564.9	541.6	499.1
Run VMG	1144.1	912.7	774.3	678.6	611.5	573.4	528.3
Selected Courses							
Windward / Leeward	1216.3	997.0	868.9	781.6	728.7	701.8	677.3
All purpose	942.3	780.3	691.0	639.1	608.0	589.9	568.5

Single Number Scoring Options		
Course	Time On Distance	Time On Time
Windward / Leeward	818.6	0.7330
All purpose	664.1	0.9035

Custom scoring options for Estonia

Single Number	Time On Distance	Time On Time
Coastal/Long Distance	724.6	0.8281
Triple Number Coastal/Long Distance Low	861.2	0.6967
Triple Number Coastal/Long Distance Medium	660.4	0.9086
Triple Number Coastal/Long Distance High	586.3	1.0233
Triple Number Windward/Leeward Low	1106.6	0.5422
Triple Number Windward/Leeward Medium	815.4	0.7358
Triple Number Windward/Leeward High	699.3	0.8580

Performance Curve	6 kt	8 kt	10 kt	12 kt	14 kt	16 kt	20 kt
Coastal/Long Distance	1209.1	935.4	780.4	682.9	632.6	597.1	543.1