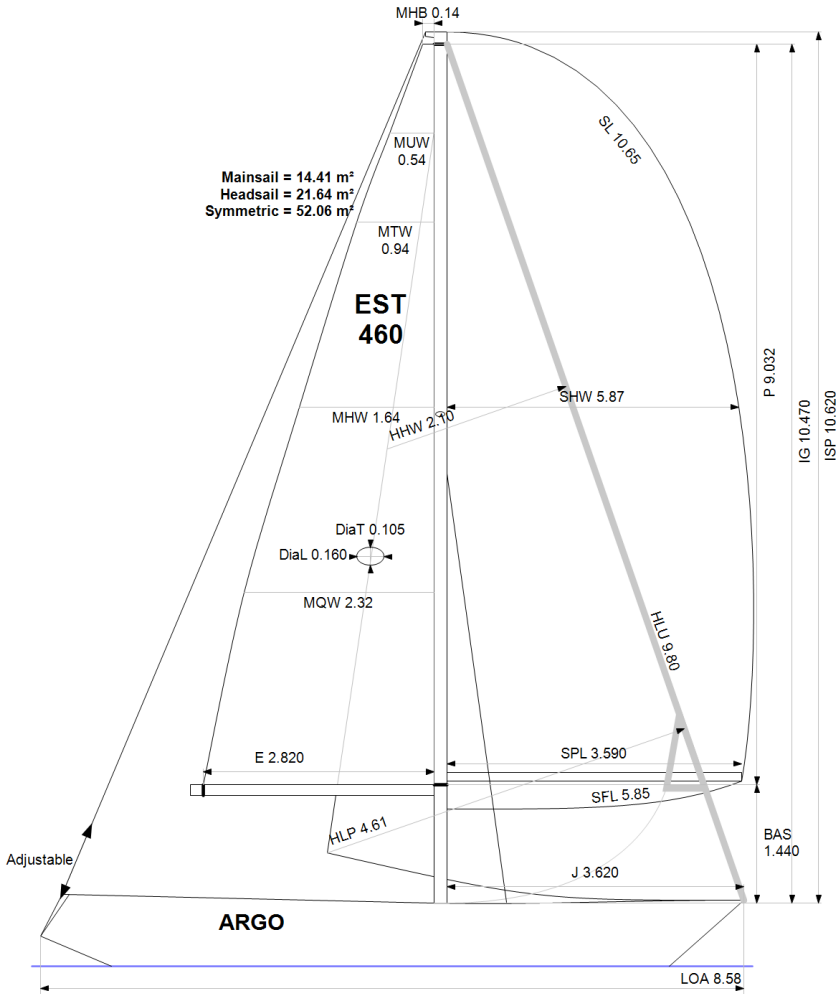


**GPH = 758.8**    **CDL = 6.180**



**BOAT**

Class **COMPIS 28**  
Designer **BO ANDERSSON**  
Builder **KARLSTAD**  
Age Date  
Series Date **01/1974**  
Offset File **e186.bof**

**HULL**

Length Overall **8.580 m**  
Maximum Beam **2.920 m**  
Draft **1.556 m**  
Displacement **3,200 kg**  
DLR **9.0062**  
IMS Division **Cruiser/Racer**  
Dynamic Allowance **0.541%**  
Age Allowance **0.487%**

**PROPELLER**

Installation **Shaft non exposed**  
Type **Folding 2 blades**  
Diameter **0.330m**

**CREW**

Maximum weight **420 kg**  
Minimum weight **315 kg \* when applied**  
Non Manual Power **No**  
Crew Arm Extension

**SAIL AREAS (m<sup>2</sup>)**

	Measured	Rated
Mainsail	<b>14.41</b>	<b>14.56</b>
Headsail Luffed	<b>21.64</b>	<b>21.64</b>
Headsail Flying		
Symmetric	<b>52.06</b>	<b>52.06</b>
Asymmetric		

**SAIL LIMITATIONS**

Headsails **1**  
Spinnakers **4**

**STABILITY**

Righting Moment **39.2 kg·m**  
Stability Index **N/A**

**OWNER**

*The owner certifies that he/she understands his/her responsibilities under ORC Rule and Regulations.*

Rated boat velocities in knots							
Wind Velocity	6 kt	8 kt	10 kt	12 kt	14 kt	16 kt	20 kt
Beat Angles	43.1°	41.3°	42.0°	41.1°	39.8°	39.6°	39.8°
Beat VMG	2.76	3.26	3.66	3.99	4.20	4.30	4.33
52°	4.19	4.92	5.50	5.81	5.98	6.08	6.15
60°	4.41	5.19	5.71	5.96	6.12	6.24	6.36
75°	4.57	5.38	5.86	6.10	6.27	6.42	6.67
90°	4.61	5.55	6.04	6.29	6.43	6.52	6.84
110°	4.72	5.68	6.15	6.44	6.72	6.97	7.23
120°	4.61	5.57	6.09	6.40	6.70	6.99	7.45
135°	4.26	5.15	5.86	6.22	6.50	6.81	7.38
150°	3.69	4.56	5.34	5.92	6.23	6.49	7.05
Run VMG	3.19	3.95	4.64	5.27	5.81	6.15	6.66
Gybe Angles	149.0°	153.0°	152.5°	165.0°	180.0°	180.0°	180.0°

Time Allowances in secs/NM							
Wind Velocity	6 kt	8 kt	10 kt	12 kt	14 kt	16 kt	20 kt
Beat VMG	1305.8	1103.5	983.9	901.9	856.3	837.8	831.4
52°	858.2	731.3	654.8	620.1	602.2	592.0	585.0
60°	815.9	693.0	630.3	603.8	588.1	577.1	566.2
75°	788.0	669.4	614.0	590.3	574.3	560.8	539.6
90°	781.3	648.6	595.9	572.5	560.2	552.0	526.4
110°	762.1	633.5	585.8	559.2	535.9	516.7	497.6
120°	781.0	645.9	590.9	562.2	537.6	514.9	483.5
135°	845.7	699.6	614.4	579.2	553.7	529.0	487.6
150°	976.4	789.9	674.7	608.6	578.1	554.7	510.6
Run VMG	1127.4	910.5	775.7	683.6	619.5	585.8	540.4
Selected Courses							
Windward / Leeward	1216.6	1007.0	879.8	792.8	737.9	711.8	685.9
All purpose	948.1	789.9	703.4	652.8	620.9	602.6	579.4

Single Number Scoring Options		
Course	Time On Distance	Time On Time
Windward / Leeward	828.4	0.7243
All purpose	676.3	0.8871

### Custom scoring options for Estonia

Single Number	Time On Distance	Time On Time
Coastal/Long Distance	737.0	0.8141
Triple Number Coastal/Long Distance Low	868.9	0.6905
Triple Number Coastal/Long Distance Medium	673.1	0.8914
Triple Number Coastal/Long Distance High	598.5	1.0025
Triple Number Windward/Leeward Low	1111.7	0.5397
Triple Number Windward/Leeward Medium	825.9	0.7265
Triple Number Windward/Leeward High	708.6	0.8467

Performance Curve	6 kt	8 kt	10 kt	12 kt	14 kt	16 kt	20 kt
Coastal/Long Distance	1207.7	944.5	791.9	696.6	645.3	610.5	556.0