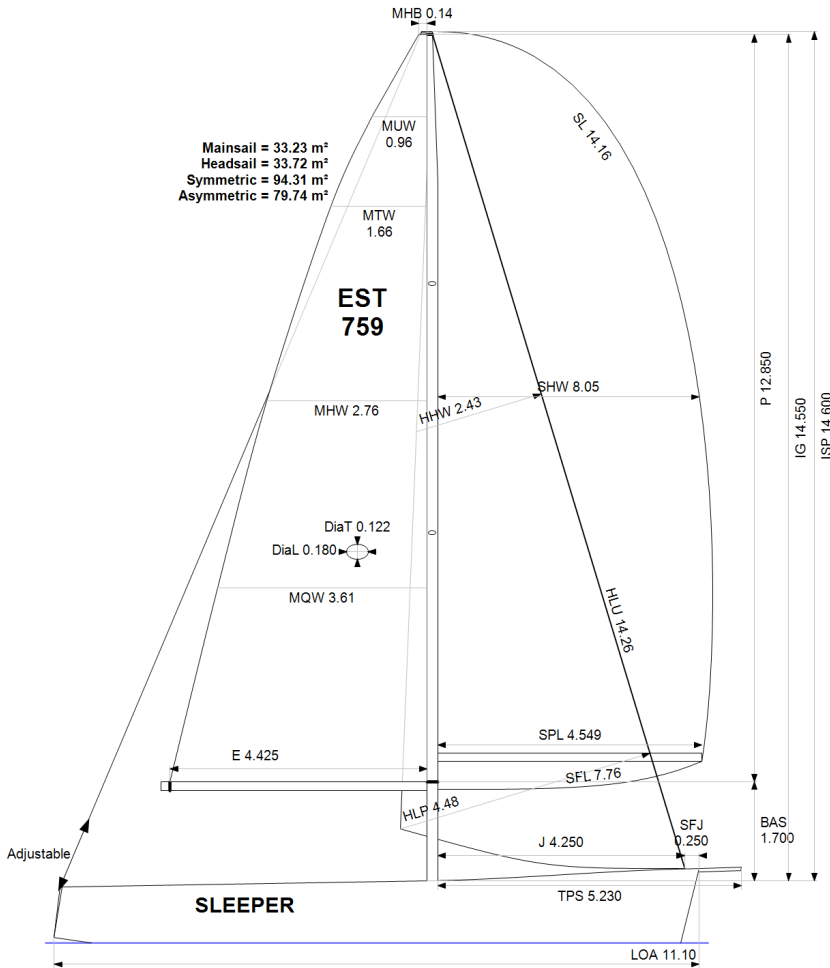


GPH = 601.5 **CDL = 9.598**



BOAT

Class **J-11S**
Designer **Johnstone**
Builder **J-Boats**
Age Date **01/2015**
Series Date **01/2011**
Offset File **J111.off**

HULL

Length Overall **11.100 m**
Maximum Beam **3.294 m**
Draft **2.197 m**
Displacement **4,437 kg**
DLR **4.2051**
IMS Division **Cruiser/Racer**
Dynamic Allowance **0.181%**
Age Allowance **0.325%**

PROPELLER

Installation **Strut**
Type **Folding 2 blades**
Diameter **0.416m**

CREW

Maximum weight **190 kg**
Minimum weight **120 kg** * when applied
Non Manual Power
Crew Arm Extension

SAIL AREAS (m²)

	Measured	Rated
Mainsail	33.23	33.83
Headsail Luffed	33.72	33.72
Headsail Flying		
Symmetric	94.31	94.31
Asymmetric	79.73	80.59

* All asymmetric spinnakers with SHW/SFL > 85%

SAIL LIMITATIONS

Headsails **5**
Spinnakers **4** * Asymmetric SHALL NOT be tacked on the pole

STABILITY

Righting Moment **114.7 kg·m**
Stability Index **N/A**

COMMENTS

Sleeper XI ex. NED 486

OWNER

Rated boat velocities in knots							
Wind Velocity	6 kt	8 kt	10 kt	12 kt	14 kt	16 kt	20 kt
Beat Angles	42.8°	41.3°	40.5°	39.8°	39.4°	39.0°	39.8°
Beat VMG	3.59	4.37	4.85	5.04	5.11	5.18	5.23
52°	5.46	6.55	7.11	7.29	7.36	7.39	7.51
60°	5.76	6.85	7.33	7.52	7.60	7.63	7.76
75°	6.01	7.05	7.52	7.78	7.95	8.04	8.11
90°	5.93	7.01	7.54	7.87	8.17	8.45	8.75
110°	5.84	7.11	7.71	8.14	8.43	8.72	9.18
120°	5.71	7.00	7.66	8.15	8.68	9.12	9.80
135°	5.18	6.46	7.36	7.86	8.40	9.03	10.43
150°	4.37	5.52	6.57	7.36	7.84	8.33	9.57
Run VMG	3.79	4.78	5.69	6.45	7.05	7.59	8.51
Gybe Angles	141.5°	147.0°	149.0°	155.5°	170.0°	180.0°	180.0°

The owner certifies that he/she understands his/her responsibilities under ORC Rule and Regulations.

Time Allowances in secs/NM							
Wind Velocity	6 kt	8 kt	10 kt	12 kt	14 kt	16 kt	20 kt
Beat VMG	1002.9	822.9	741.7	714.2	704.1	694.6	688.3
52°	659.4	549.3	506.5	494.1	489.1	487.1	479.1
60°	624.9	525.8	490.9	478.9	473.9	471.7	464.1
75°	599.3	510.6	478.7	462.8	453.0	447.7	443.8
90°	606.6	513.6	477.5	457.5	440.5	426.1	411.2
110°	616.3	506.3	466.8	442.3	426.8	412.8	392.2
120°	630.3	514.5	469.7	441.8	415.0	394.5	367.3
135°	694.8	557.6	489.1	457.9	428.5	398.7	345.1
150°	823.6	652.1	547.9	489.0	459.4	432.1	376.3
Run VMG	951.1	753.0	632.7	558.0	510.4	474.4	423.0
Selected Courses							
Windward / Leeward	977.0	788.0	687.2	636.1	607.3	584.5	555.6
All purpose	753.3	616.1	551.2	519.6	500.5	483.7	460.4

Single Number Scoring Options		
Course	Time On Distance	Time On Time
Windward / Leeward	663.6	0.9042
All purpose	536.9	1.1175

Custom scoring options for Estonia

Single Number	Time On Distance	Time On Time
Coastal/Long Distance	584.8	1.0259
Triple Number Coastal/Long Distance Low	684.7	0.8763
Triple Number Coastal/Long Distance Medium	533.4	1.1248
Triple Number Coastal/Long Distance High	479.2	1.2522
Triple Number Windward/Leeward Low	882.5	0.6799
Triple Number Windward/Leeward Medium	658.5	0.9111
Triple Number Windward/Leeward High	579.4	1.0356

Performance Curve	6 kt	8 kt	10 kt	12 kt	14 kt	16 kt	20 kt
Coastal/Long Distance	974.4	740.7	620.2	555.2	519.4	488.3	438.8

