

GPH = **710.6** CDL = **6.713**

BOAT

Class **X-79**
Designer **NIELS JEPPESEN**
Builder **X-YACHTS**
Age Date **01/1981**
Series Date **01/1979**
Offset File **X79.OD+.OFF**

HULL

Length Overall **7.927 m**
Maximum Beam **2.860 m**
Draft **1.382 m**
Displacement **1,875 kg**
DLR **6.5822**
IMS Division **Cruiser/Racer**
Dynamic Allowance **0.214%**
Age Allowance **0.487%**

PROPELLER

Installation **No Propeller**
Type **N/A**
Diameter **N/A**

CREW

Maximum weight **380 kg**
Minimum weight **285 kg** * when applied
Non Manual Power **No**
Crew Arm Extension

SAIL AREAS (m²)

	Measured	Rated
Mainsail	20.48	20.84
Headsail Luffed	15.85	15.85
Headsail Flying		
Symmetric	38.64	38.64
Asymmetric	40.07	40.07

* 1 asymmetric(s) with SHW/SFL < 85%

SAIL LIMITATIONS

Headsails **5** * Woven polyester sails
Spinnakers **4** * Asymmetric SHALL NOT be tacked on the pole

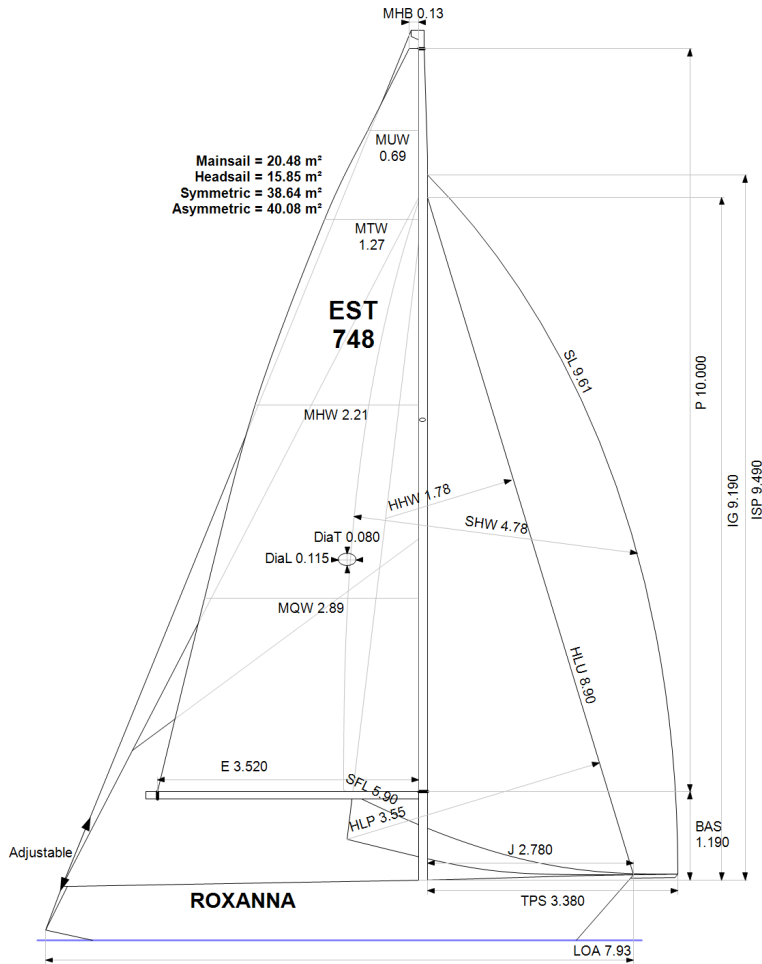
STABILITY

Righting Moment **43.5 kg·m**
Stability Index **N/A**

COMMENTS

Lisatud 105,6 kg ballasti Kaal koos p aramootoriga

OWNER



Rated boat velocities in knots

Wind Velocity	6 kt	8 kt	10 kt	12 kt	14 kt	16 kt	20 kt
Beat Angles	42.8°	41.6°	41.1°	39.2°	38.6°	38.6°	39.8°
Beat VMG	2.99	3.59	4.06	4.38	4.48	4.51	4.45
52°	4.57	5.41	5.91	6.17	6.29	6.34	6.34
60°	4.85	5.67	6.07	6.32	6.49	6.57	6.61
75°	5.06	5.87	6.26	6.49	6.74	6.95	7.12
90°	5.28	6.07	6.46	6.82	7.07	7.22	7.59
110°	5.15	6.00	6.44	6.87	7.30	7.73	8.43
120°	4.92	5.85	6.33	6.75	7.18	7.65	8.88
135°	4.40	5.39	6.06	6.45	6.85	7.27	8.26
150°	3.75	4.70	5.52	6.09	6.45	6.82	7.62
Run VMG	3.25	4.07	4.81	5.49	6.03	6.38	7.10
Gybe Angles	147.0°	147.5°	154.5°	171.0°	180.0°	180.0°	180.0°

The owner certifies that he/she understands his/her responsibilities under ORC Rule and Regulations.

Time Allowances in secs/NM							
Wind Velocity	6 kt	8 kt	10 kt	12 kt	14 kt	16 kt	20 kt
Beat VMG	1205.7	1003.4	887.0	822.8	803.8	798.7	808.4
52°	787.4	665.9	609.3	583.7	572.3	568.0	568.0
60°	742.2	635.2	592.9	569.8	554.8	548.0	545.0
75°	711.5	613.8	574.9	554.8	534.1	517.8	505.8
90°	682.1	593.6	556.9	528.1	509.5	498.9	474.5
110°	699.1	599.5	559.0	524.4	493.1	465.9	427.1
120°	731.9	615.4	568.4	533.4	501.2	470.8	405.2
135°	818.1	667.5	594.4	558.1	525.2	495.4	435.8
150°	960.0	766.0	652.5	591.2	558.2	527.7	472.4
Run VMG	1108.5	884.5	748.0	656.1	597.4	564.1	507.0
Selected Courses							
Windward / Leeward	1157.1	943.9	817.5	739.4	700.6	681.4	657.7
All purpose	885.5	736.6	658.7	611.9	584.2	566.7	541.2

Single Number Scoring Options		
Course	Time On Distance	Time On Time
Windward / Leeward	778.7	0.7705
All purpose	633.8	0.9466

Custom scoring options for Estonia

Single Number	Time On Distance	Time On Time
Coastal/Long Distance	691.0	0.8683
Triple Number Coastal/Long Distance Low	811.0	0.7398
Triple Number Coastal/Long Distance Medium	631.0	0.9509
Triple Number Coastal/Long Distance High	561.5	1.0686
Triple Number Windward/Leeward Low	1050.6	0.5711
Triple Number Windward/Leeward Medium	772.8	0.7764
Triple Number Windward/Leeward High	677.3	0.8859

Performance Curve	6 kt	8 kt	10 kt	12 kt	14 kt	16 kt	20 kt
Coastal/Long Distance	1152.3	885.6	739.3	652.2	607.8	573.9	511.2

