

GPH = **598.6** CDL = **9.247**

BOAT

Class **Waarschip 36 WK**
Designer **Peltzer Design**
Builder **NCD**
Age Date **01/2018**
Series Date **01/2018**
Offset File **waar36.off**

HULL

Length Overall **10.955 m**
Maximum Beam **3.588 m**
Draft **2.030 m**
Displacement **4,699 kg**
DLR **5.3286**
IMS Division **Performance**
Dynamic Allowance **0.000%**
Age Allowance **0.098%**

PROPELLER

Installation **Strut**
Type **Folding 2 blades**
Diameter **0.430m**

CREW

Maximum weight **215 kg**
Minimum weight **130 kg * when applied**
Non Manual Power
Crew Arm Extension

SAIL AREAS (m²)

	Measured	Rated
Mainsail	42.09	43.14
Headsail Luffed	30.64	30.64
Headsail Flying		
Symmetric	100.94	100.94
Asymmetric	96.12	96.12

* 2 asymmetric(s) with SHW/SFL < 85%

SAIL LIMITATIONS

Headsails **5**
Spinnakers **4 * Asymmetric SHALL NOT be tacked on the pole**

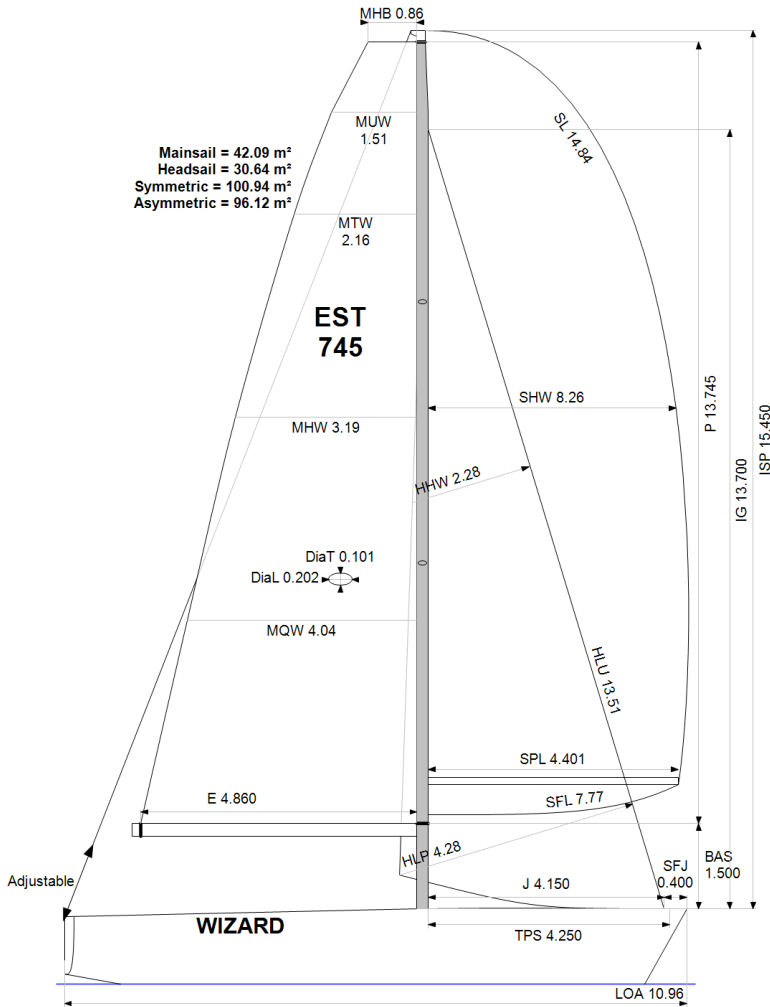
STABILITY

Righting Moment **145.0 kg·m**
Stability Index **N/A**

COMMENTS

EX NED 2018

OWNER



Rated boat velocities in knots

Wind Velocity	6 kt	8 kt	10 kt	12 kt	14 kt	16 kt	20 kt
Beat Angles	43.5°	42.0°	41.3°	40.5°	40.3°	41.3°	42.0°
Beat VMG	3.48	4.26	4.78	4.99	5.06	5.09	5.11
52°	5.35	6.42	7.08	7.33	7.41	7.44	7.53
60°	5.67	6.74	7.33	7.58	7.68	7.72	7.83
75°	6.11	7.16	7.59	7.84	8.08	8.21	8.30
90°	6.33	7.34	7.83	8.22	8.48	8.69	9.04
110°	6.08	7.23	7.81	8.32	8.80	9.36	10.19
120°	5.84	7.06	7.72	8.27	8.84	9.42	10.51
135°	5.25	6.53	7.40	7.92	8.48	9.11	10.74
150°	4.43	5.61	6.65	7.40	7.89	8.40	9.62
Run VMG	3.84	4.86	5.76	6.51	7.12	7.65	8.60
Gybe Angles	142.5°	147.0°	150.5°	156.5°	173.0°	180.0°	180.0°

The owner certifies that he/she understands his/her responsibilities under ORC Rule and Regulations.

Time Allowances in secs/NM							
Wind Velocity	6 kt	8 kt	10 kt	12 kt	14 kt	16 kt	20 kt
Beat VMG	1034.6	845.3	753.8	721.8	711.6	707.0	705.1
52°	673.5	560.5	508.3	491.4	485.6	483.6	478.1
60°	634.9	534.0	491.2	475.0	469.1	466.3	459.9
75°	589.0	503.1	474.4	459.4	445.6	438.5	433.7
90°	568.8	490.2	459.5	438.1	424.7	414.4	398.1
110°	591.7	498.1	460.7	432.8	408.9	384.6	353.3
120°	616.8	510.0	466.2	435.2	407.2	382.3	342.5
135°	686.0	551.4	486.6	454.6	424.4	395.0	335.2
150°	812.7	642.1	541.2	486.2	456.3	428.4	374.4
Run VMG	938.4	741.5	624.7	553.4	505.5	470.7	418.5
Selected Courses							
Windward / Leeward	986.5	793.4	689.3	637.6	608.6	588.9	561.8
All purpose	751.1	615.5	549.5	516.3	496.2	479.4	455.0

Single Number Scoring Options		
Course	Time On Distance	Time On Time
Windward / Leeward	666.5	0.9002
All purpose	533.8	1.1239

Custom scoring options for Estonia

Single Number	Time On Distance	Time On Time
Coastal/Long Distance	583.4	1.0284
Triple Number Coastal/Long Distance Low	683.3	0.8781
Triple Number Coastal/Long Distance Medium	530.6	1.1307
Triple Number Coastal/Long Distance High	474.5	1.2646
Triple Number Windward/Leeward Low	889.9	0.6742
Triple Number Windward/Leeward Medium	660.6	0.9083
Triple Number Windward/Leeward High	583.7	1.0280

Performance Curve	6 kt	8 kt	10 kt	12 kt	14 kt	16 kt	20 kt
Coastal/Long Distance	981.7	743.5	620.0	552.8	516.0	484.6	430.0