

**GPH = 689.9**    **CDL = 7.093**

**BOAT**

Class **Inferno 29 mod**  
Designer **H.Södergren**  
Builder  
Age Date **01/1982**  
Series Date **03/1979**  
Offset File **inferno29-est739.off**

**HULL**

Length Overall **8.783 m**  
Maximum Beam **2.514 m**  
Draft **1.492 m**  
Displacement **2,481 kg**  
DLR **6.4310**  
IMS Division **Cruiser/Racer**  
Dynamic Allowance **0.033%**  
Age Allowance **0.487%**

**PROPELLER**

Installation **Shaft exposed**  
Type **Folding 2 blades**  
Diameter **0.330m**

**CREW**

Maximum weight **440 kg**  
Minimum weight **330 kg \* when applied**  
Non Manual Power **No**  
Crew Arm Extension

**SAIL AREAS (m²)**

	Measured	Rated
Mainsail	<b>26.49</b>	<b>27.15</b>
Headsail Luffed	<b>17.73</b>	<b>17.73</b>
Headsail Flying		
Symmetric	<b>54.67</b>	<b>54.67</b>
Asymmetric		

**SAIL LIMITATIONS**

Headsails **5** \* Woven polyester sails  
Spinnakers **4**

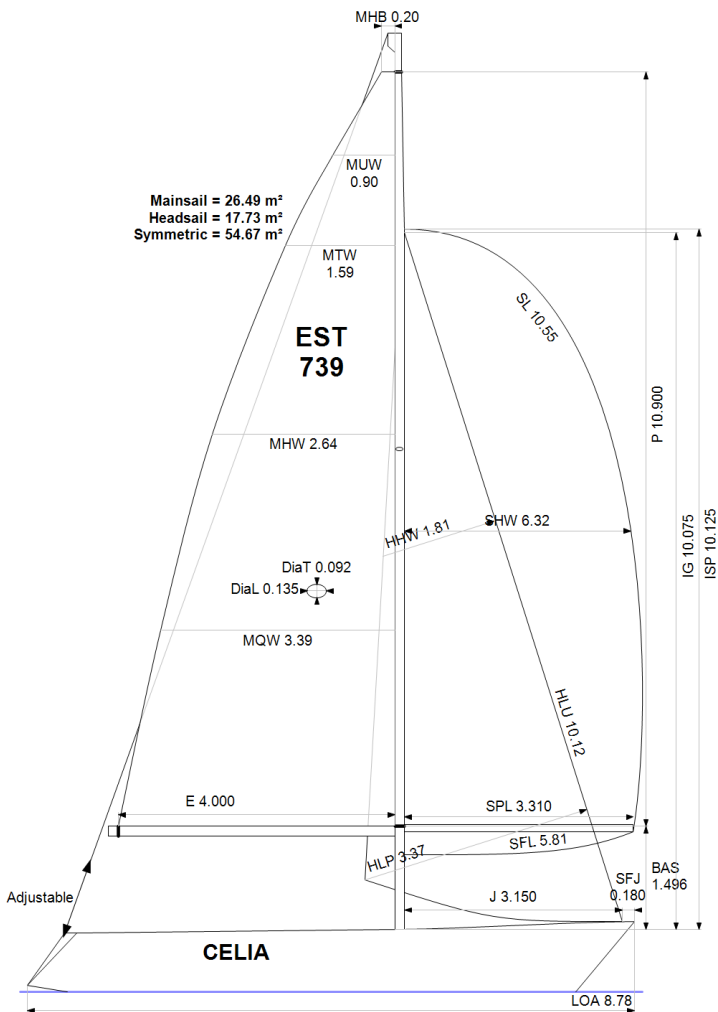
**STABILITY**

Righting Moment **41.4 kg·m**  
Stability Index **N/A**

**COMMENTS**

Custom bulb

**OWNER**



Rated boat velocities in knots

Wind Velocity	6 kt	8 kt	10 kt	12 kt	14 kt	16 kt	20 kt
Beat Angles	44.3°	42.0°	40.5°	39.6°	39.4°	39.2°	39.9°
Beat VMG	3.12	3.76	4.22	4.40	4.46	4.47	4.48
52°	4.79	5.66	6.12	6.29	6.35	6.37	6.43
60°	5.09	5.90	6.28	6.46	6.53	6.57	6.64
75°	5.31	6.07	6.41	6.64	6.81	6.91	6.98
90°	5.32	6.18	6.53	6.70	6.96	7.19	7.48
110°	5.37	6.25	6.66	7.04	7.35	7.56	7.92
120°	5.19	6.15	6.60	7.00	7.43	7.84	8.34
135°	4.68	5.71	6.36	6.73	7.14	7.59	8.65
150°	3.89	4.90	5.81	6.39	6.74	7.12	7.98
Run VMG	3.37	4.24	5.05	5.75	6.29	6.64	7.38
Gybe Angles	146.5°	151.0°	152.0°	166.0°	180.0°	180.0°	180.0°

The owner certifies that he/she understands his/her responsibilities under ORC Rule and Regulations.

Time Allowances in secs/NM							
Wind Velocity	6 kt	8 kt	10 kt	12 kt	14 kt	16 kt	20 kt
Beat VMG	1154.9	956.8	852.5	817.3	806.8	804.8	803.7
52°	750.9	636.3	588.3	572.4	567.0	564.9	559.9
60°	707.9	610.4	573.3	557.6	551.1	548.1	542.5
75°	677.9	592.9	561.7	542.5	528.9	521.2	515.9
90°	676.3	582.7	551.0	537.4	517.6	500.5	481.1
110°	671.0	575.6	540.3	511.6	490.0	476.5	454.8
120°	693.6	584.9	545.5	514.6	484.6	459.3	431.5
135°	770.0	630.9	566.3	534.9	504.2	474.3	416.2
150°	924.4	734.2	620.1	563.4	534.3	505.7	451.0
Run VMG	1067.4	849.1	713.6	626.5	572.2	541.9	487.8
Selected Courses							
Windward / Leeward	1111.1	902.9	783.0	721.9	689.5	673.4	645.8
All purpose	849.6	705.9	634.3	599.0	576.5	562.2	539.1

Single Number Scoring Options		
Course	Time On Distance	Time On Time
Windward / Leeward	756.5	0.7931
All purpose	618.1	0.9707

### Custom scoring options for Estonia

Single Number	Time On Distance	Time On Time
Coastal/Long Distance	673.0	0.8915
Triple Number Coastal/Long Distance Low	777.8	0.7714
Triple Number Coastal/Long Distance Medium	614.0	0.9772
Triple Number Coastal/Long Distance High	557.1	1.0770
Triple Number Windward/Leeward Low	1007.0	0.5958
Triple Number Windward/Leeward Medium	749.3	0.8008
Triple Number Windward/Leeward High	667.0	0.8995

Performance Curve	6 kt	8 kt	10 kt	12 kt	14 kt	16 kt	20 kt
Coastal/Long Distance	1106.8	848.0	709.8	638.2	599.3	567.6	514.0