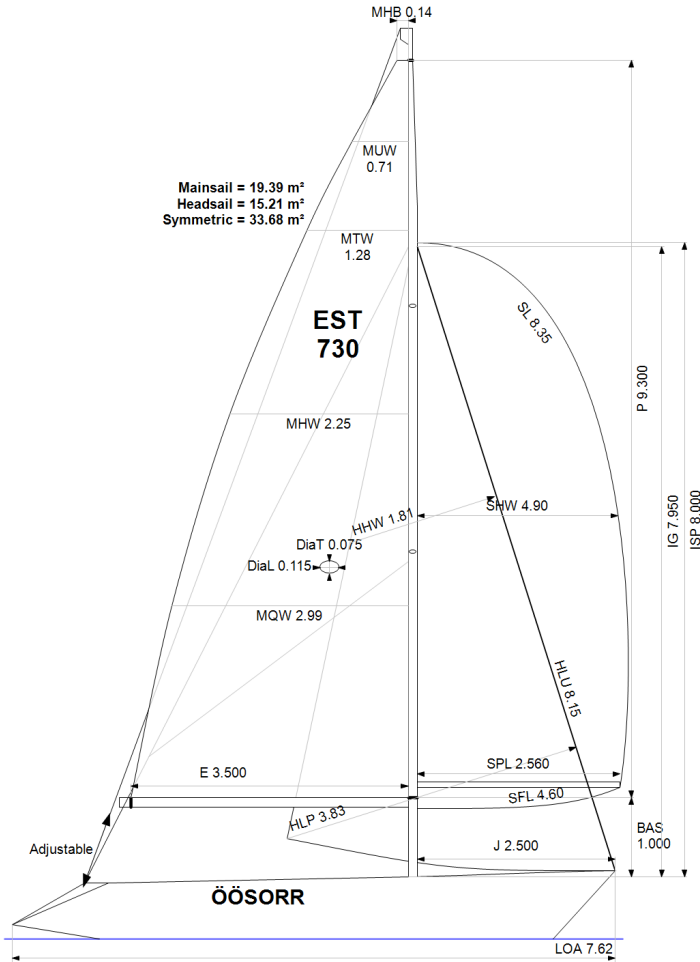


**GPH = 726.6** **CDL = 6.187**



**BOAT**

Class **Polaris**  
Designer **SET**  
Builder **SET**  
Age Date **01/1991**  
Series Date **01/1984**  
Offset File **POLARI90.OFF**

**HULL**

Length Overall **7.620 m**  
Maximum Beam **2.692 m**  
Draft **1.599 m**  
Displacement **1,663 kg**  
DLR **8.5239**  
IMS Division **Performance**  
Dynamic Allowance **0.007%**  
Age Allowance **0.487%**

**PROPELLER**

Installation **No Propeller**  
Type **N/A**  
Diameter **N/A**

**CREW**

Maximum weight **210 kg**  
Minimum weight **125 kg** \* when applied  
Non Manual Power **No**  
Crew Arm Extension

**SAIL AREAS (m²)**

	Measured	Rated
Mainsail	<b>19.39</b>	<b>19.83</b>
Headsail Luffed	<b>15.21</b>	<b>15.21</b>
Headsail Flying		
Symmetric	<b>33.68</b>	<b>33.68</b>
Asymmetric		

**SAIL LIMITATIONS**

Headsails **5**  
Spinnakers **4**

**STABILITY**

Righting Moment **30.3 kg·m**  
Stability Index **N/A**

**COMMENTS**

Kaal koos päramootoriga

**OWNER**

Rated boat velocities in knots							
Wind Velocity	6 kt	8 kt	10 kt	12 kt	14 kt	16 kt	20 kt
Beat Angles	41.3°	40.5°	39.0°	38.3°	37.9°	37.9°	38.8°
Beat VMG	3.12	3.70	4.11	4.28	4.34	4.36	4.32
52°	4.68	5.45	5.81	5.97	6.04	6.08	6.07
60°	4.92	5.62	5.93	6.12	6.22	6.28	6.30
75°	5.10	5.74	6.04	6.28	6.47	6.61	6.71
90°	5.06	5.78	6.16	6.42	6.60	6.82	7.11
110°	4.97	5.80	6.20	6.57	6.91	7.17	7.46
120°	4.78	5.69	6.12	6.49	6.86	7.20	7.79
135°	4.26	5.21	5.88	6.24	6.60	6.96	7.68
150°	3.62	4.55	5.37	5.93	6.27	6.61	7.27
Run VMG	3.13	3.94	4.68	5.38	5.88	6.21	6.86
Gybe Angles	149.0°	153.0°	154.0°	174.0°	180.0°	180.0°	180.0°

The owner certifies that he/she understands his/her responsibilities under ORC Rule and Regulations.

Time Allowances in secs/NM							
Wind Velocity	6 kt	8 kt	10 kt	12 kt	14 kt	16 kt	20 kt
Beat VMG	1155.4	972.1	875.7	841.6	829.9	826.6	833.7
52°	769.4	660.7	619.7	602.8	595.6	592.1	592.7
60°	732.4	640.8	606.7	588.7	578.6	573.4	571.0
75°	705.4	627.4	595.7	573.7	556.4	544.8	536.6
90°	711.4	622.6	584.7	561.0	545.4	527.7	506.1
110°	724.2	620.7	580.3	548.1	521.4	501.9	482.5
120°	753.0	633.2	588.0	554.7	525.1	500.2	462.3
135°	844.1	691.5	612.1	576.7	545.1	517.4	468.9
150°	995.5	791.6	670.4	606.8	574.3	544.7	495.2
Run VMG	1149.5	913.5	768.5	669.0	612.1	579.3	524.7
Selected Courses							
Windward / Leeward	1152.4	942.8	822.1	755.3	721.0	703.0	679.2
All purpose	888.7	744.4	670.8	631.6	607.4	591.5	571.2

Single Number Scoring Options		
Course	Time On Distance	Time On Time
Windward / Leeward	791.4	0.7582
All purpose	651.7	0.9207

### Custom scoring options for Estonia

Single Number	Time On Distance	Time On Time
Coastal/Long Distance	707.6	0.8479
Triple Number Coastal/Long Distance Low	816.5	0.7348
Triple Number Coastal/Long Distance Medium	648.0	0.9259
Triple Number Coastal/Long Distance High	587.9	1.0206
Triple Number Windward/Leeward Low	1047.7	0.5727
Triple Number Windward/Leeward Medium	784.6	0.7647
Triple Number Windward/Leeward High	698.6	0.8589

Performance Curve	6 kt	8 kt	10 kt	12 kt	14 kt	16 kt	20 kt
Coastal/Long Distance	1152.1	888.6	748.2	671.5	631.5	598.8	544.9

