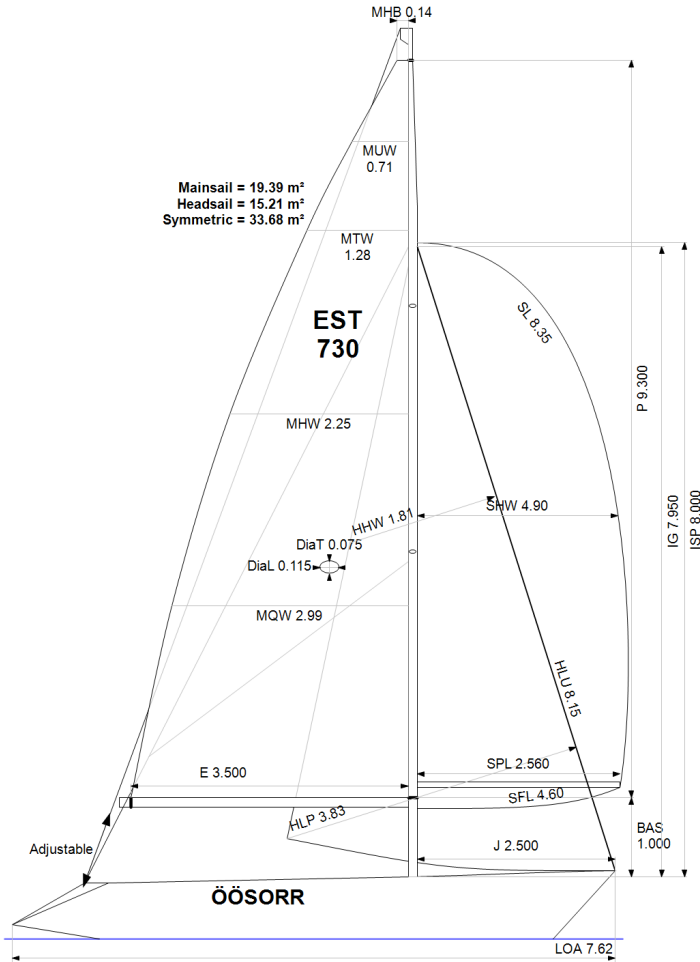


**GPH = 719.3** **CDL = 6.426**



**BOAT**

Class **Polaris**  
Designer **SET**  
Builder **SET**  
Age Date **01/1991**  
Series Date **01/1984**  
Offset File **POLARI90.OFF**

**HULL**

Length Overall **7.620 m**  
Maximum Beam **2.692 m**  
Draft **1.599 m**  
Displacement **1,663 kg**  
DLR **8.5235**  
IMS Division **Performance**  
Dynamic Allowance **0.008%**  
Age Allowance **0.487%**

**PROPELLER**

Installation **No Propeller**  
Type **N/A**  
Diameter **N/A**

**CREW**

Maximum weight **420 kg**  
Minimum weight **315 kg** \* when applied  
Non Manual Power **No**  
Crew Arm Extension

**SAIL AREAS (m²)**

	Measured	Rated
Mainsail	<b>19.39</b>	<b>19.83</b>
Headsail Luffed	<b>15.21</b>	<b>15.21</b>
Headsail Flying		
Symmetric	<b>33.68</b>	<b>33.68</b>
Asymmetric		

**SAIL LIMITATIONS**

Headsails **5**  
Spinnakers **4**

**STABILITY**

Righting Moment **30.3 kg·m**  
Stability Index **N/A**

**COMMENTS**

Kaal koos päramootoriga

**OWNER**

Rated boat velocities in knots							
Wind Velocity	6 kt	8 kt	10 kt	12 kt	14 kt	16 kt	20 kt
Beat Angles	41.3°	41.3°	39.0°	36.9°	36.0°	36.0°	36.8°
Beat VMG	3.11	3.70	4.16	4.44	4.54	4.59	4.56
52°	4.70	5.49	5.86	6.07	6.20	6.27	6.32
60°	4.94	5.67	5.98	6.20	6.38	6.48	6.56
75°	5.12	5.77	6.08	6.34	6.59	6.78	6.96
90°	5.06	5.82	6.21	6.55	6.80	6.94	7.32
110°	4.97	5.81	6.22	6.61	6.97	7.32	7.83
120°	4.78	5.69	6.13	6.50	6.88	7.24	8.02
135°	4.26	5.21	5.88	6.24	6.60	6.96	7.69
150°	3.62	4.55	5.37	5.93	6.27	6.61	7.27
Run VMG	3.13	3.94	4.68	5.38	5.88	6.21	6.86
Gybe Angles	149.0°	153.0°	154.0°	174.0°	180.0°	180.0°	180.0°

The owner certifies that he/she understands his/her responsibilities under ORC Rule and Regulations.

Time Allowances in secs/NM							
Wind Velocity	6 kt	8 kt	10 kt	12 kt	14 kt	16 kt	20 kt
Beat VMG	1156.8	972.0	866.0	811.4	792.9	785.1	789.3
52°	766.2	655.5	614.9	593.3	580.3	574.0	569.7
60°	728.2	634.9	602.4	580.8	564.4	555.4	548.5
75°	703.4	624.2	591.9	567.9	546.6	531.0	516.9
90°	711.8	618.6	579.5	549.9	529.1	519.0	491.6
110°	724.4	619.8	578.6	544.6	516.2	492.1	459.9
120°	753.2	633.2	587.7	553.6	523.2	497.1	448.9
135°	844.2	691.6	612.2	576.7	545.1	517.3	468.2
150°	995.5	791.6	670.4	606.8	574.4	544.7	495.2
Run VMG	1149.5	913.5	768.6	669.0	612.1	579.4	524.7
Selected Courses							
Windward / Leeward	1153.1	942.8	817.3	740.2	702.5	682.2	657.0
All purpose	888.5	743.0	667.0	622.0	594.6	577.2	552.7

Single Number Scoring Options		
Course	Time On Distance	Time On Time
Windward / Leeward	779.0	0.7702
All purpose	643.0	0.9331

### Custom scoring options for Estonia

Single Number	Time On Distance	Time On Time
Coastal/Long Distance	698.3	0.8593
Triple Number Coastal/Long Distance Low	815.8	0.7355
Triple Number Coastal/Long Distance Medium	640.3	0.9371
Triple Number Coastal/Long Distance High	572.4	1.0483
Triple Number Windward/Leeward Low	1047.9	0.5726
Triple Number Windward/Leeward Medium	773.4	0.7758
Triple Number Windward/Leeward High	677.8	0.8852

Performance Curve	6 kt	8 kt	10 kt	12 kt	14 kt	16 kt	20 kt
Coastal/Long Distance	1152.7	888.1	744.0	659.9	617.4	585.0	528.6

