

GPH = **687.0** CDL = **7.904**

BOAT

Class **Maxi Mixer 35**
Designer **Pelle Petterson**
Builder **Maxi Yachts**
Age Date **01/1982**
Series Date **01/1981**
Offset File **S9308.BOF**

HULL

Length Overall **10.550 m**
Maximum Beam **3.218 m**
Draft **1.911 m**
Displacement **5,320 kg**
DLR **7.8676**
IMS Division
Dynamic Allowance **0.418%**
Age Allowance **0.487%**

PROPELLER

Installation **Strut**
Type **Folding 2 blades**
Diameter **0.406m**

CREW

Maximum weight **572 kg**
Minimum weight **429 kg * when applied**
Non Manual Power **No**
Crew Arm Extension

SAIL AREAS (m²)

	Measured	Rated
Mainsail	32.83	33.32
Headsail Luffed	24.63	24.63
Headsail Flying		
Symmetric	62.42	62.42
Asymmetric		

SAIL LIMITATIONS

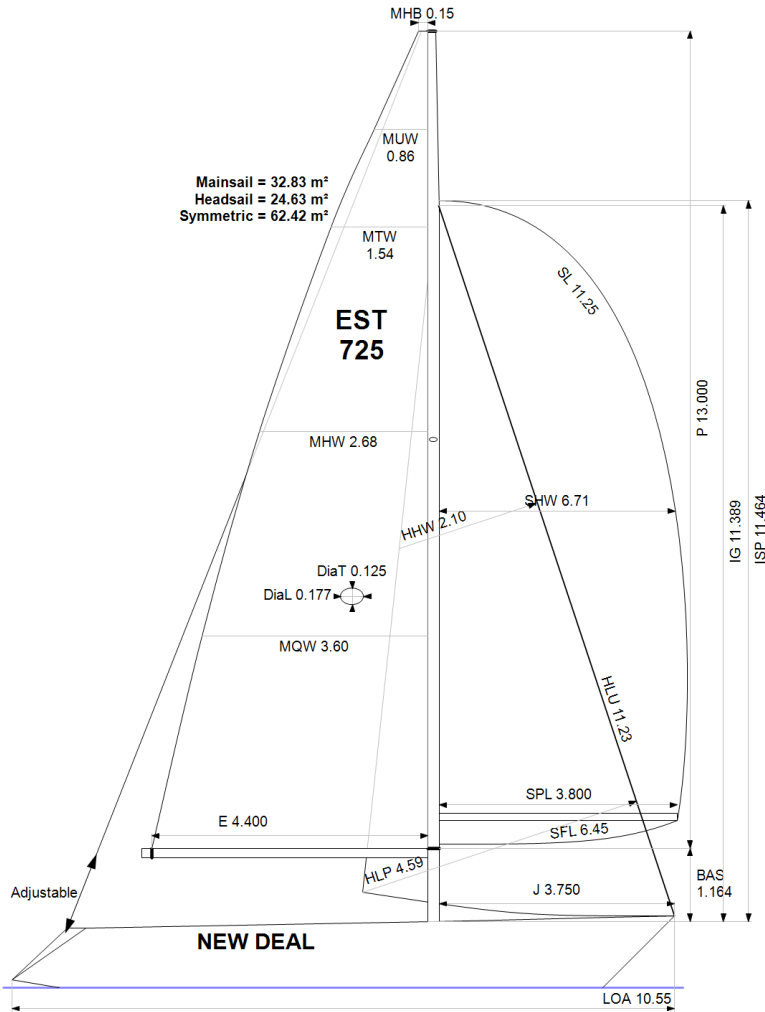
Headsails **5**
Spinnakers **4**

STABILITY

Righting Moment **99.7 kg·m**
Stability Index **N/A**

OWNER

The owner certifies that he/she understands his/her responsibilities under ORC Rule and Regulations.



Rated boat velocities in knots

Wind Velocity	6 kt	8 kt	10 kt	12 kt	14 kt	16 kt	20 kt
Beat Angles	43.5°	41.3°	40.9°	40.1°	38.6°	38.3°	38.6°
Beat VMG	3.06	3.69	4.17	4.57	4.80	4.88	4.91
52°	4.70	5.54	6.21	6.55	6.74	6.84	6.90
60°	4.96	5.84	6.42	6.71	6.89	7.02	7.11
75°	5.16	6.09	6.59	6.85	7.05	7.22	7.49
90°	5.16	6.18	6.73	7.02	7.22	7.34	7.70
110°	5.15	6.23	6.78	7.10	7.42	7.74	8.17
120°	4.98	6.05	6.69	7.03	7.34	7.67	8.33
135°	4.48	5.45	6.34	6.79	7.10	7.41	8.11
150°	3.77	4.77	5.64	6.39	6.80	7.10	7.71
Run VMG	3.26	4.13	4.89	5.63	6.27	6.71	7.29
Gybe Angles	147.0°	152.0°	153.0°	158.0°	180.0°	180.0°	180.0°

Time Allowances in secs/NM							
Wind Velocity	6 kt	8 kt	10 kt	12 kt	14 kt	16 kt	20 kt
Beat VMG	1175.2	975.4	862.9	787.8	750.6	737.0	733.7
52°	766.5	649.5	580.1	549.3	534.2	526.3	521.9
60°	725.6	616.2	560.4	536.2	522.2	513.1	506.1
75°	698.3	591.4	546.6	525.4	510.5	498.3	480.7
90°	698.3	582.1	535.0	512.6	498.3	490.4	467.8
110°	698.9	577.4	531.0	506.7	485.5	465.3	440.5
120°	723.5	595.2	538.1	512.0	490.7	469.3	432.1
135°	803.9	660.4	568.1	529.9	506.8	485.5	444.0
150°	955.0	754.7	638.5	563.1	529.2	507.4	467.1
Run VMG	1102.7	870.7	735.6	639.8	573.9	536.3	493.9
Selected Courses							
Windward / Leeward	1139.0	923.1	799.2	713.8	662.3	636.6	613.8
All purpose	874.2	718.8	635.5	586.2	556.3	539.6	518.0

Single Number Scoring Options		
Course	Time On Distance	Time On Time
Windward / Leeward	750.0	0.7999
All purpose	609.7	0.9841

Custom scoring options for Estonia

Single Number	Time On Distance	Time On Time
Coastal/Long Distance	665.9	0.9011
Triple Number Coastal/Long Distance Low	796.5	0.7533
Triple Number Coastal/Long Distance Medium	606.2	0.9898
Triple Number Coastal/Long Distance High	535.7	1.1201
Triple Number Windward/Leeward Low	1030.9	0.5820
Triple Number Windward/Leeward Medium	746.8	0.8034
Triple Number Windward/Leeward High	634.5	0.9457

Performance Curve	6 kt	8 kt	10 kt	12 kt	14 kt	16 kt	20 kt
Coastal/Long Distance	1135.4	865.8	718.1	625.2	578.3	547.2	497.6