

GPH = 750.2 CDL = 6.482

BOAT

Class **FENIX**
Designer
Builder **Rootsi**
Age Date **01/1983**
Series Date **01/1981**
Offset File **fenix3.off**

HULL

Length Overall **8.300 m**
Maximum Beam **2.894 m**
Draft **1.582 m**
Displacement **3,069 kg**
DLR **8.7294**
IMS Division **Cruiser/Racer**
Dynamic Allowance **0.468%**
Age Allowance **0.487%**

PROPELLER

Installation **Strut**
Type **Folding 2 blades**
Diameter **0.340m**

CREW

Maximum weight **410 kg**
Minimum weight **308 kg * when applied**
Non Manual Power **No**
Crew Arm Extension

SAIL AREAS (m²)

	Measured	Rated
Mainsail	20.94	21.35
Headsail Luffed	20.49	20.49
Headsail Flying		
Symmetric	45.33	45.33
Asymmetric	41.45	41.45

* 1 asymmetric(s) with SHW/SFL < 85%

SAIL LIMITATIONS

Headsails **5**
Spinnakers **4 * Asymmetric may be tacked on the pole**

STABILITY

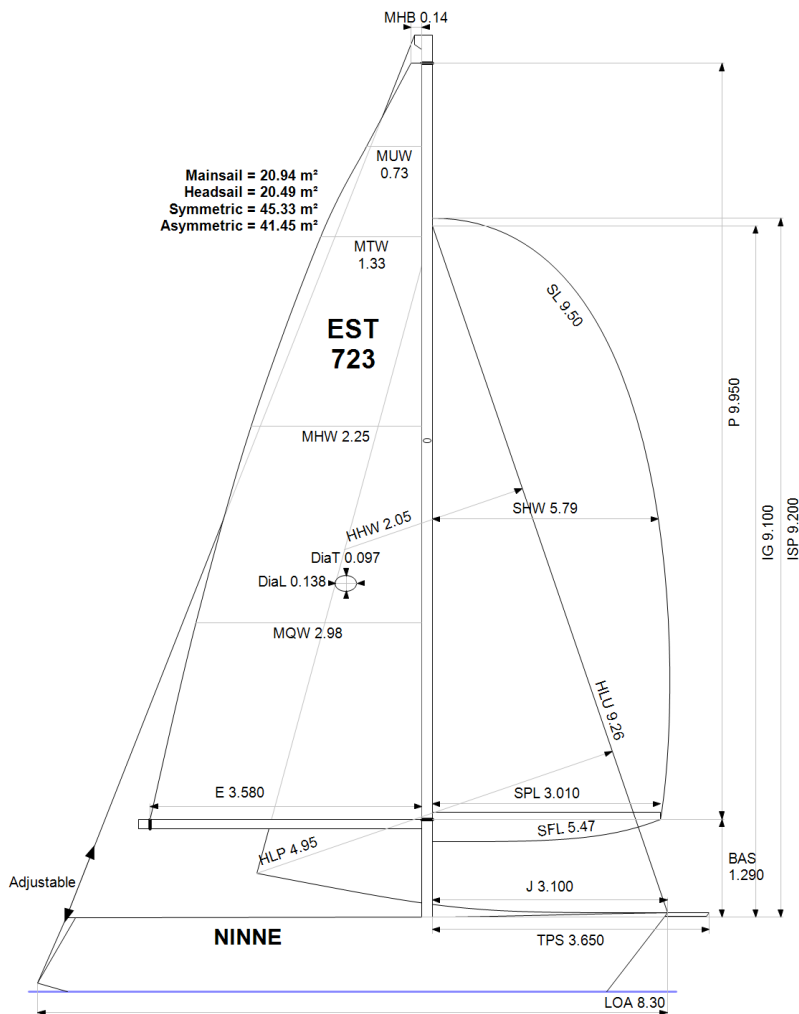
Righting Moment **52.7 kg·m**
Stability Index **N/A**

COMMENTS

ballast 100kg

OWNER

The owner certifies that he/she understands his/her responsibilities under ORC Rule and Regulations.



Rated boat velocities in knots

Wind Velocity	6 kt	8 kt	10 kt	12 kt	14 kt	16 kt	20 kt
Beat Angles	43.5°	42.8°	42.0°	40.9°	39.8°	39.4°	40.9°
Beat VMG	2.77	3.32	3.75	4.11	4.30	4.36	4.32
52°	4.27	5.04	5.63	5.97	6.14	6.21	6.22
60°	4.52	5.33	5.85	6.13	6.30	6.39	6.43
75°	4.71	5.55	6.02	6.28	6.46	6.63	6.80
90°	4.84	5.76	6.22	6.51	6.75	6.92	7.11
110°	4.74	5.71	6.22	6.54	6.86	7.17	7.65
120°	4.58	5.56	6.14	6.47	6.79	7.13	7.73
135°	4.11	5.03	5.85	6.26	6.56	6.88	7.54
150°	3.52	4.41	5.24	5.93	6.28	6.57	7.18
Run VMG	3.05	3.83	4.56	5.27	5.85	6.22	6.78
Gybe Angles	146.0°	154.0°	153.5°	166.0°	180.0°	180.0°	180.0°

Time Allowances in secs/NM							
Wind Velocity	6 kt	8 kt	10 kt	12 kt	14 kt	16 kt	20 kt
Beat VMG	1299.0	1085.4	960.0	875.1	836.9	826.3	833.5
52°	843.1	713.9	639.4	603.0	586.0	579.8	578.5
60°	795.8	675.2	615.6	587.7	571.6	563.1	559.8
75°	764.0	648.5	598.0	572.9	557.5	543.3	529.1
90°	743.4	624.6	578.5	553.2	533.3	519.9	506.3
110°	759.7	630.5	578.9	550.5	524.5	501.9	470.6
120°	786.3	647.9	586.6	556.6	530.1	504.9	466.0
135°	876.7	715.4	615.0	575.1	548.6	523.0	477.6
150°	1022.8	816.3	686.4	607.2	572.9	548.3	501.6
Run VMG	1181.1	940.7	789.7	682.7	614.9	578.6	531.1
Selected Courses							
Windward / Leeward	1240.0	1013.0	874.9	778.9	725.9	702.4	682.3
All purpose	951.8	786.4	694.9	639.6	607.3	589.9	569.9

Single Number Scoring Options		
Course	Time On Distance	Time On Time
Windward / Leeward	821.5	0.7304
All purpose	666.1	0.9008

Custom scoring options for Estonia

Single Number	Time On Distance	Time On Time
Coastal/Long Distance	727.9	0.8243
Triple Number Coastal/Long Distance Low	869.1	0.6904
Triple Number Coastal/Long Distance Medium	662.2	0.9061
Triple Number Coastal/Long Distance High	586.7	1.0226
Triple Number Windward/Leeward Low	1126.5	0.5326
Triple Number Windward/Leeward Medium	817.2	0.7342
Triple Number Windward/Leeward High	700.8	0.8562

Performance Curve	6 kt	8 kt	10 kt	12 kt	14 kt	16 kt	20 kt
Coastal/Long Distance	1234.1	948.6	785.4	683.0	631.5	596.9	544.3