

GPH = **678.8** CDL = **7.183**

**BOAT**

Class **MAK SEVEN**  
Designer **L. Gonciarz**  
Builder **Yacht Service**  
Age Date **01/2008**  
Series Date **01/2008**  
Offset File **MAK7Race.off**

**HULL**

Length Overall **7.410 m**  
Maximum Beam **2.474 m**  
Draft **1.567 m**  
Displacement **1,400 kg**  
DLR **3.8047**  
IMS Division **Sportboat**  
Dynamic Allowance **0.000%**  
Age Allowance **0.422%**

**PROPELLER**

Installation **No Propeller**  
Type **N/A**  
Diameter **N/A**

**CREW**

Maximum weight **375 kg**  
Minimum weight **281 kg \* when applied**  
Non Manual Power **No**  
Crew Arm Extension

**SAIL AREAS (m<sup>2</sup>)**

	Measured	Rated
Mainsail	<b>17.04</b>	<b>17.47</b>
Headsail Luffed	<b>14.09</b>	<b>14.09</b>
Headsail Flying		
Symmetric	<b>45.13</b>	<b>45.13</b>
Asymmetric	<b>54.77</b>	<b>54.77</b>

\* 1 asymmetric(s) with SHW/SFL < 85%

**SAIL LIMITATIONS**

Headsails **5**  
Spinnakers **4 \* Asymmetric SHALL NOT be tacked on the pole**

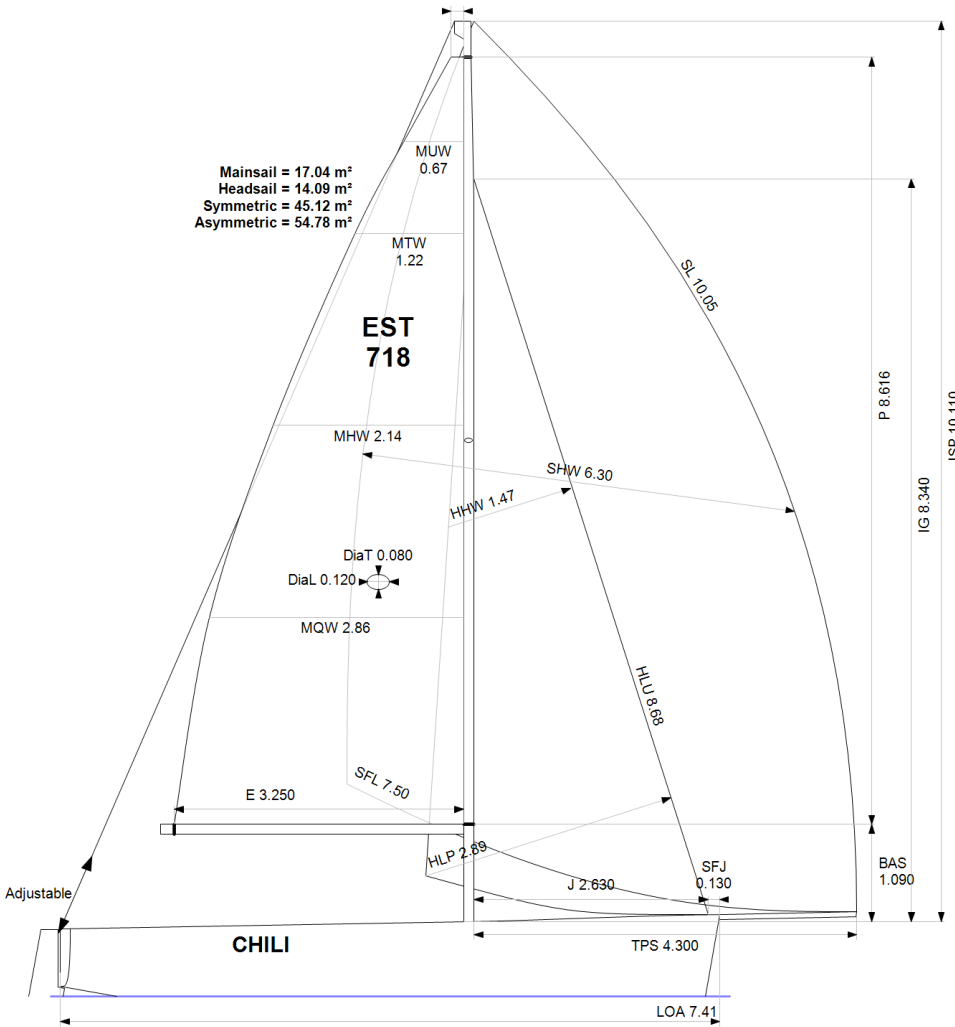
**STABILITY**

Righting Moment **40.0 kg·m**  
Stability Index **N/A**

**COMMENTS**

1400kg with out board engine

**OWNER**



Rated boat velocities in knots

Wind Velocity	6 kt	8 kt	10 kt	12 kt	14 kt	16 kt	20 kt
Beat Angles	42.8°	41.3°	40.5°	37.9°	36.8°	36.4°	37.1°
Beat VMG	3.06	3.70	4.19	4.55	4.73	4.79	4.76
52°	4.67	5.56	6.03	6.30	6.49	6.62	6.66
60°	4.92	5.79	6.18	6.44	6.69	6.90	7.03
75°	5.11	5.95	6.32	6.59	6.93	7.27	7.74
90°	5.41	6.21	6.65	6.98	7.20	7.45	8.24
110°	5.49	6.29	6.81	7.40	7.99	8.42	9.19
120°	5.31	6.21	6.72	7.33	8.03	8.83	10.14
135°	4.75	5.83	6.42	6.92	7.53	8.27	10.47
150°	4.04	5.05	5.87	6.34	6.76	7.26	8.75
Run VMG	3.50	4.38	5.09	5.69	6.21	6.60	7.53
Gybe Angles	145.2°	147.8°	149.0°	166.0°	180.0°	180.0°	180.0°

The owner certifies that he/she understands his/her responsibilities under ORC Rule and Regulations.

Time Allowances in secs/NM							
Wind Velocity	6 kt	8 kt	10 kt	12 kt	14 kt	16 kt	20 kt
Beat VMG	1176.8	973.3	858.9	791.7	761.3	751.6	755.7
52°	771.6	648.0	596.5	571.3	554.3	544.2	540.2
60°	731.2	621.9	582.3	559.0	538.4	521.9	511.8
75°	703.9	604.9	569.3	546.2	519.7	495.4	465.4
90°	664.9	579.5	541.7	515.8	500.0	482.9	436.8
110°	655.7	571.9	528.7	486.2	450.4	427.8	391.7
120°	678.1	579.6	536.1	491.5	448.1	407.8	355.1
135°	757.9	617.5	561.2	520.3	478.0	435.3	343.8
150°	890.8	712.2	612.9	567.7	532.6	495.7	411.5
Run VMG	1028.7	822.4	707.8	632.4	579.4	545.6	478.3
Selected Courses							
Windward / Leeward	1102.7	897.9	783.3	712.0	670.3	648.6	617.0
All purpose	847.1	704.6	633.0	587.6	555.2	532.7	495.6

Single Number Scoring Options		
Course	Time On Distance	Time On Time
Windward / Leeward	745.0	0.8054
All purpose	604.8	0.9921

### Custom scoring options for Estonia

Single Number	Time On Distance	Time On Time
Coastal/Long Distance	658.5	0.9112
Triple Number Coastal/Long Distance Low	775.9	0.7733
Triple Number Coastal/Long Distance Medium	604.4	0.9927
Triple Number Coastal/Long Distance High	524.4	1.1441
Triple Number Windward/Leeward Low	1000.3	0.5998
Triple Number Windward/Leeward Medium	740.8	0.8099
Triple Number Windward/Leeward High	642.2	0.9343

Performance Curve	6 kt	8 kt	10 kt	12 kt	14 kt	16 kt	20 kt
Coastal/Long Distance	1095.3	843.0	709.0	626.6	577.8	537.6	468.7