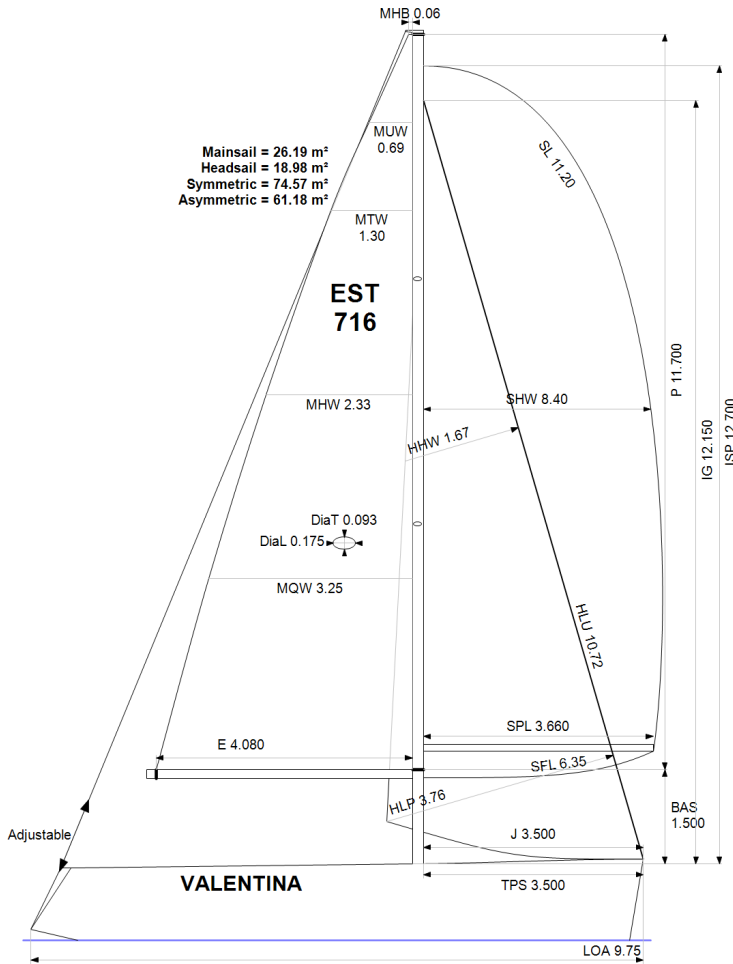


GPH = 709.4 **CDL = 7.436**



BOAT

Class **Bavaria 32 CR**
Designer **Farr**
Builder **Bavaria**
Age Date **01/2009**
Series Date **01/2009**
Offset File **BAV32cr.OFF**

HULL

Length Overall **9.750 m**
Maximum Beam **3.428 m**
Draft **1.897 m**
Displacement **5,600 kg**
DLR **7.4844**
IMS Division **Cruiser/Racer**
Dynamic Allowance **0.428%**
Age Allowance **0.390%**

PROPELLER

Installation **Strut**
Type **Folding 2 blades**
Diameter **0.380m**

CREW

Maximum weight **375 kg**
Minimum weight **281 kg** * when applied
Non Manual Power **No**
Crew Arm Extension

SAIL AREAS (m²)

	Measured	Rated
Mainsail	26.19	26.48
Headsail Luffed	18.98	18.98
Headsail Flying		
Symmetric	74.57	74.57
Asymmetric	61.18	61.18

* All asymmetric spinnakers with SHW/SFL > 85%

SAIL LIMITATIONS

Headsails **5** * Woven polyester sails
Spinnakers **4** * Asymmetric SHALL NOT be tacked on the pole

STABILITY

Righting Moment **139.0 kg·m**
Stability Index **N/A**

OWNER

The owner certifies that he/she understands his/her responsibilities under ORC Rule and Regulations.

Rated boat velocities in knots							
Wind Velocity	6 kt	8 kt	10 kt	12 kt	14 kt	16 kt	20 kt
Beat Angles	45.0°	43.1°	42.0°	42.0°	41.6°	40.1°	40.5°
Beat VMG	2.72	3.32	3.75	4.12	4.48	4.75	4.87
52°	4.23	5.06	5.68	6.22	6.60	6.83	7.01
60°	4.51	5.34	6.00	6.50	6.80	7.00	7.22
75°	4.73	5.64	6.38	6.82	7.02	7.17	7.49
90°	5.03	6.07	6.77	7.12	7.36	7.51	7.69
110°	5.15	6.23	6.88	7.23	7.55	7.86	8.36
120°	5.01	6.08	6.80	7.18	7.50	7.84	8.53
135°	4.56	5.57	6.46	6.96	7.28	7.60	8.30
150°	3.85	4.86	5.74	6.51	6.95	7.25	7.87
Run VMG	3.34	4.21	4.98	5.70	6.31	6.81	7.41
Gybe Angles	147.0°	151.0°	151.5°	156.0°	174.0°	180.0°	180.0°

Time Allowances in secs/NM							
Wind Velocity	6 kt	8 kt	10 kt	12 kt	14 kt	16 kt	20 kt
Beat VMG	1321.7	1084.5	959.9	873.4	803.0	758.6	739.0
52°	850.3	712.0	633.9	578.6	545.5	527.2	513.8
60°	797.9	673.9	599.6	554.0	529.3	514.1	498.5
75°	761.0	638.1	564.0	528.1	512.9	502.3	480.6
90°	715.1	593.2	531.5	505.8	489.4	479.4	467.9
110°	698.9	577.8	523.2	497.6	477.0	457.8	430.8
120°	718.5	592.1	529.5	501.6	480.1	459.0	421.9
135°	789.8	646.7	557.4	517.6	494.6	473.8	433.5
150°	934.5	740.2	626.7	553.2	517.9	496.3	457.5
Run VMG	1079.1	854.7	722.8	632.0	570.3	528.9	486.0
Selected Courses							
Windward / Leeward	1200.4	969.6	841.4	752.7	686.6	643.8	612.5
All purpose	917.6	751.2	659.7	603.9	565.8	539.3	513.9

Single Number Scoring Options		
Course	Time On Distance	Time On Time
Windward / Leeward	783.4	0.7659
All purpose	626.9	0.9571

Custom scoring options for Estonia

Single Number	Time On Distance	Time On Time
Coastal/Long Distance	687.2	0.8731
Triple Number Coastal/Long Distance Low	834.4	0.7191
Triple Number Coastal/Long Distance Medium	625.3	0.9596
Triple Number Coastal/Long Distance High	536.4	1.1186
Triple Number Windward/Leeward Low	1085.0	0.5530
Triple Number Windward/Leeward Medium	783.8	0.7655
Triple Number Windward/Leeward High	642.7	0.9335

Performance Curve	6 kt	8 kt	10 kt	12 kt	14 kt	16 kt	20 kt
Coastal/Long Distance	1188.3	905.7	750.2	648.7	587.5	545.6	491.9

