

GPH = 550.5 **CDL = 11.674**

BOAT

Class **Xp-44**
Designer **JEPPESEN**
Builder **X-YACHTS**
Age Date **06/2013**
Series Date **12/2010**
Offset File **XP44.off**

HULL

Length Overall **13.305 m**
Maximum Beam **4.054 m**
Draft **2.675 m**
Displacement **9,127 kg**
DLR **5.2815**
IMS Division **Cruiser/Racer**
Dynamic Allowance **0.111%**
Age Allowance **0.357%**

PROPELLER

Installation **Strut**
Type **Folding 2 blades**
Diameter **0.457m**

CREW

Maximum weight **950 kg**
Minimum weight **713 kg * when applied**
Non Manual Power **Rig**
Crew Arm Extension

SAIL AREAS (m²)

	Measured	Rated
Mainsail	61.12	62.16
Headsail Luffed	48.70	48.70
Headsail Flying		
Symmetric	151.37	151.37
Asymmetric	165.75	165.75

* All asymmetric spinnakers with SHW/SFL > 85%

SAIL LIMITATIONS

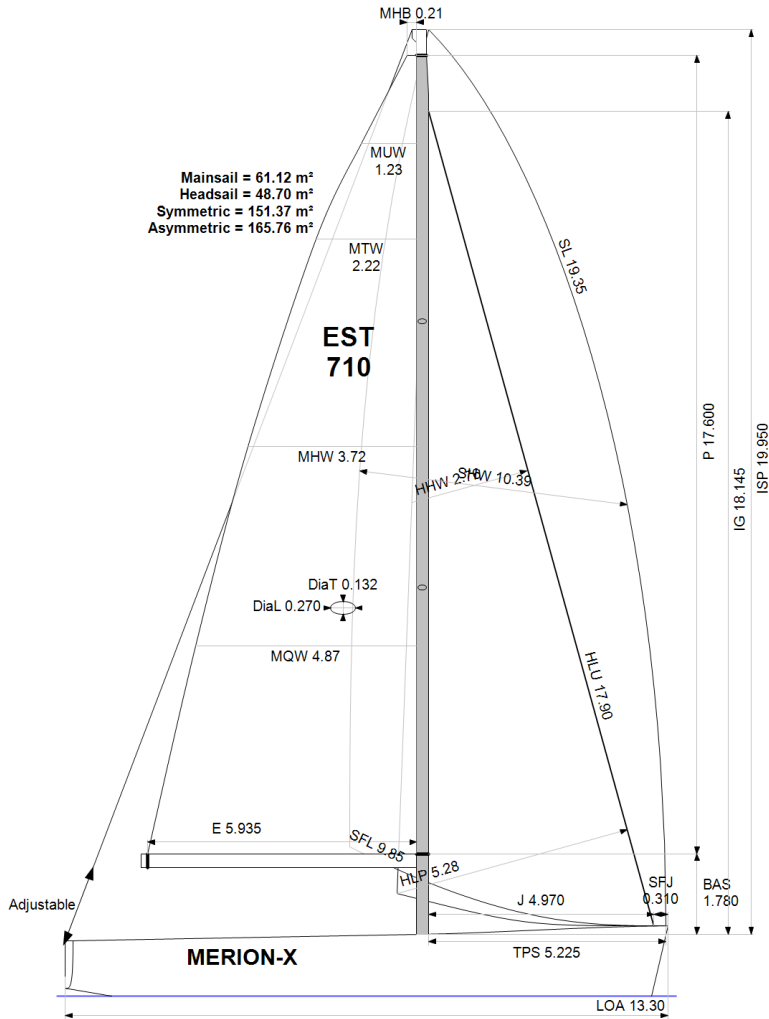
Headsails **7**
Spinnakers **5** * Asymmetric SHALL NOT be tacked on the pole

STABILITY

Righting Moment **266.7 kg·m**
Stability Index **N/A**

OWNER

The owner certifies that he/she understands his/her responsibilities under ORC Rule and Regulations.



Rated boat velocities in knots							
Wind Velocity	6 kt	8 kt	10 kt	12 kt	14 kt	16 kt	20 kt
Beat Angles	42.8°	41.3°	40.5°	39.0°	38.1°	38.3°	37.7°
Beat VMG	3.84	4.70	5.35	5.68	5.83	5.90	6.06
52°	5.88	7.04	7.79	8.10	8.22	8.29	8.40
60°	6.23	7.37	8.01	8.31	8.45	8.53	8.63
75°	6.54	7.62	8.17	8.50	8.77	8.97	9.14
90°	6.47	7.72	8.25	8.53	8.87	9.22	9.79
110°	6.52	7.82	8.46	8.92	9.23	9.53	10.11
120°	6.34	7.68	8.36	8.87	9.44	9.93	10.66
135°	5.64	7.02	7.98	8.51	9.01	9.61	11.09
150°	4.73	5.94	7.05	7.89	8.42	8.88	9.99
Run VMG	4.10	5.15	6.10	6.90	7.53	8.13	9.03
Gybe Angles	142.5°	145.5°	147.5°	154.5°	163.0°	180.0°	180.0°

Time Allowances in secs/NM							
Wind Velocity	6 kt	8 kt	10 kt	12 kt	14 kt	16 kt	20 kt
Beat VMG	936.6	766.5	673.3	633.6	617.7	610.4	594.2
52°	612.1	511.0	462.3	444.4	437.8	434.5	428.3
60°	577.4	488.2	449.6	433.4	425.8	421.9	417.0
75°	550.8	472.7	440.9	423.4	410.4	401.6	394.0
90°	556.5	466.2	436.4	422.1	405.8	390.3	367.9
110°	552.5	460.4	425.6	403.7	389.9	377.8	355.9
120°	567.9	468.7	430.6	405.8	381.4	362.4	337.8
135°	637.8	512.7	451.2	423.2	399.4	374.8	324.7
150°	760.7	605.6	511.0	456.1	427.6	405.5	360.4
Run VMG	878.3	699.3	590.1	521.9	477.9	443.0	398.8
Selected Courses							
Windward / Leeward	907.5	732.9	631.7	577.7	547.8	526.7	496.5
All purpose	695.0	569.6	505.6	473.1	453.5	437.9	413.9

Single Number Scoring Options		
Course	Time On Distance	Time On Time
Windward / Leeward	605.4	0.9911
All purpose	489.9	1.2246

Custom scoring options for Estonia

Single Number	Time On Distance	Time On Time
Coastal/Long Distance	535.0	1.1215
Triple Number Coastal/Long Distance Low	632.3	0.9489
Triple Number Coastal/Long Distance Medium	487.1	1.2318
Triple Number Coastal/Long Distance High	432.8	1.3863
Triple Number Windward/Leeward Low	820.2	0.7315
Triple Number Windward/Leeward Medium	601.1	0.9981
Triple Number Windward/Leeward High	520.7	1.1524

Performance Curve	6 kt	8 kt	10 kt	12 kt	14 kt	16 kt	20 kt
Coastal/Long Distance	904.6	687.7	569.8	504.8	470.3	442.6	397.6