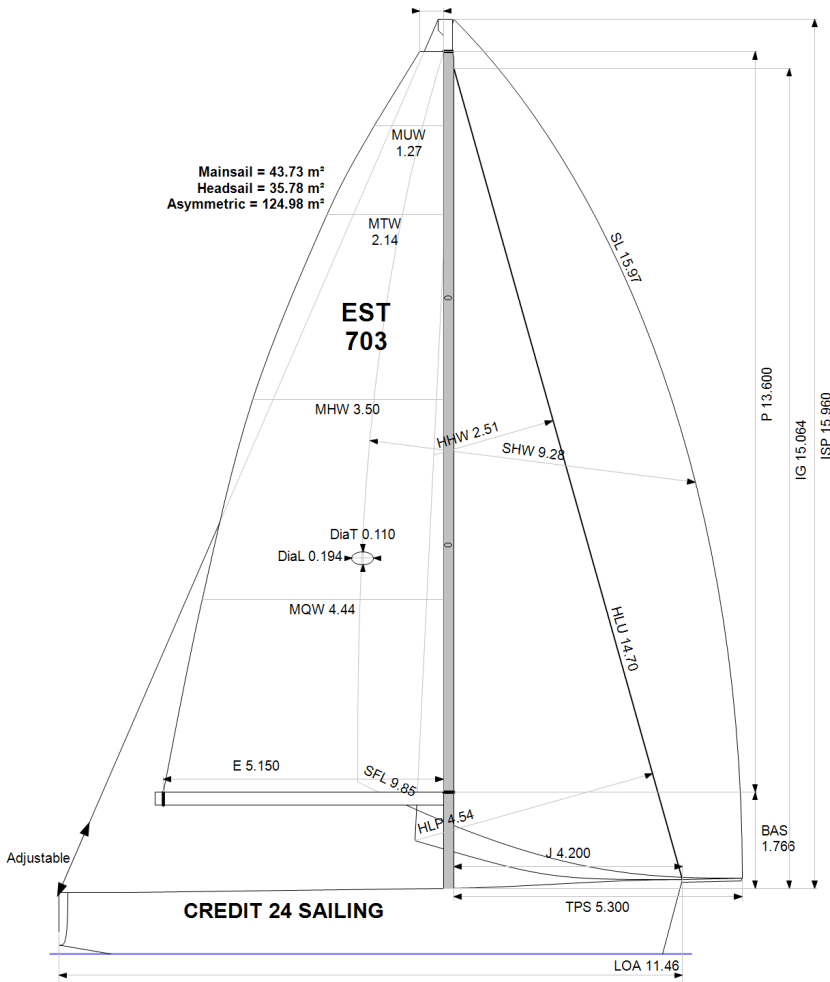


GPH = **612.5** CDL = **9.294**



**BOAT**

Class **Salona 38 ibc**  
Designer **Jakopin & Jakopin**  
Builder **AD Boats**  
Age Date **03/2013**  
Series Date **05/2011**  
Offset File **SAL38TK\_c.rud.off**

**HULL**

Length Overall **11.462 m**  
Maximum Beam **3.578 m**  
Draft **2.044 m**  
Displacement **6,252 kg**  
DLR **5.5788**  
IMS Division **Cruiser/Racer**  
Dynamic Allowance **0.127%**  
Age Allowance **0.325%**

**PROPELLER**

Installation **Strut**  
Type **Folding 2 blades**  
Diameter **0.415m**

**CREW**

Maximum weight **175 kg**  
Minimum weight **120 kg** \* when applied  
Non Manual Power **No**  
Crew Arm Extension

**SAIL AREAS (m<sup>2</sup>)**

	Measured	Rated
Mainsail	<b>43.73</b>	<b>45.02</b>
Headsail Luffed	<b>35.78</b>	<b>35.78</b>
Headsail Flying		

Symmetric  
Asymmetric **124.98** **124.98**

\* All asymmetric spinnakers with SHW/SFL > 85%

**SAIL LIMITATIONS**

Headsails **5**  
Spinnakers **4** \* Asymmetric SHALL NOT be tacked on the pole

**STABILITY**

Righting Moment **154.9 kg·m**  
Stability Index **N/A**

**OWNER**

The owner certifies that he/she understands his/her responsibilities under ORC Rule and Regulations.

Rated boat velocities in knots							
Wind Velocity	6 kt	8 kt	10 kt	12 kt	14 kt	16 kt	20 kt
Beat Angles	42.9°	41.3°	41.3°	40.9°	40.5°	40.5°	41.1°
Beat VMG	3.49	4.20	4.67	4.88	4.96	5.00	5.05
52°	5.33	6.33	6.95	7.18	7.27	7.31	7.42
60°	5.63	6.65	7.21	7.43	7.52	7.56	7.65
75°	5.89	6.89	7.40	7.67	7.83	7.92	7.98
90°	5.89	7.00	7.43	7.74	8.00	8.22	8.50
110°	6.01	7.18	7.71	7.98	8.19	8.41	8.79
120°	5.87	7.07	7.66	8.09	8.47	8.74	9.22
135°	5.23	6.51	7.37	7.83	8.27	8.77	9.88
150°	4.43	5.53	6.57	7.30	7.64	7.97	8.77
Run VMG	3.84	4.79	5.69	6.32	6.66	7.22	7.95
Gybe Angles	144.0°	148.0°	147.5°	150.3°	152.5°	176.0°	178.0°

Time Allowances in secs/NM							
Wind Velocity	6 kt	8 kt	10 kt	12 kt	14 kt	16 kt	20 kt
Beat VMG	1031.7	856.3	770.5	737.7	725.3	720.2	712.9
52°	675.9	569.1	518.3	501.6	495.2	492.7	485.3
60°	639.6	541.5	499.7	484.4	478.7	476.1	470.4
75°	611.3	522.4	486.2	469.4	459.7	454.8	451.4
90°	611.2	514.3	484.7	464.9	450.1	437.8	423.4
110°	599.4	501.7	467.0	451.1	439.8	428.1	409.6
120°	613.6	509.4	469.7	445.2	425.2	412.1	390.6
135°	688.0	553.1	488.6	459.9	435.2	410.4	364.4
150°	812.7	650.4	547.6	493.4	471.2	451.4	410.7
Run VMG	938.4	751.1	632.4	569.6	540.6	498.8	452.8
Selected Courses							
Windward / Leeward	985.1	803.7	701.4	653.7	632.9	609.5	582.8
All purpose	757.6	625.3	560.2	530.1	514.5	501.1	481.0

Single Number Scoring Options		
Course	Time On Distance	Time On Time
Windward / Leeward	682.7	0.8789
All purpose	548.5	1.0939

### Custom scoring options for Estonia

Single Number	Time On Distance	Time On Time
Coastal/Long Distance	598.0	1.0033
Triple Number Coastal/Long Distance Low	691.4	0.8678
Triple Number Coastal/Long Distance Medium	544.1	1.1027
Triple Number Coastal/Long Distance High	496.9	1.2075
Triple Number Windward/Leeward Low	894.3	0.6709
Triple Number Windward/Leeward Medium	676.9	0.8864
Triple Number Windward/Leeward High	605.3	0.9912

Performance Curve	6 kt	8 kt	10 kt	12 kt	14 kt	16 kt	20 kt
Coastal/Long Distance	980.4	753.7	631.6	566.7	534.0	505.0	457.6

