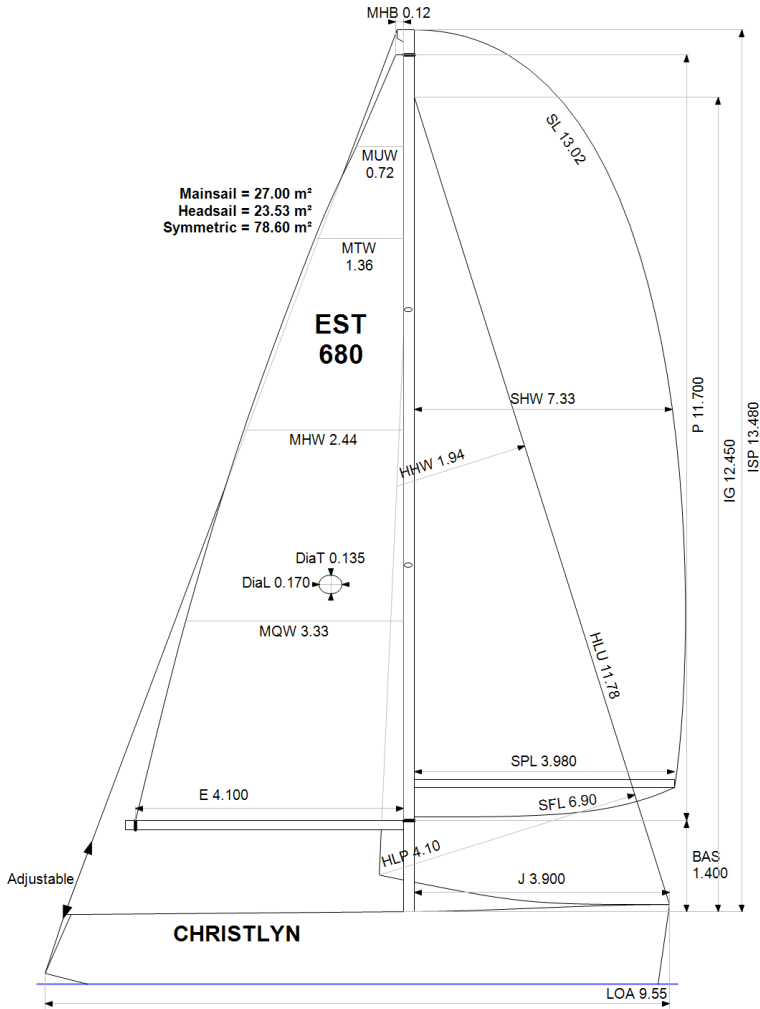


GPH = **689.9** CDL = **7.742**



BOAT

Class **Hanse 325**
Designer
Builder **Hanse Yachts**
Age Date **01/2011**
Series Date **01/2009**
Offset File **Hanse320.off**

HULL

Length Overall **9.550 m**
Maximum Beam **3.302 m**
Draft **1.796 m**
Displacement **5,200 kg**
DLR **6.9787**
IMS Division **Cruiser/Racer**
Dynamic Allowance **0.332%**
Age Allowance **0.390%**

PROPELLER

Installation **Strut**
Type **Folding 2 blades**
Diameter **0.330m**

CREW

Maximum weight **370 kg**
Minimum weight **278 kg * when applied**
Non Manual Power **No**
Crew Arm Extension

SAIL AREAS (m²)

	Measured	Rated
Mainsail	27.00	27.36
Headsail Luffed	23.53	23.53
Headsail Flying		
Symmetric	78.60	78.60
Asymmetric		

SAIL LIMITATIONS

Headsails **5**
Spinnakers **4**

STABILITY

Righting Moment **104.9 kg·m**
Stability Index **N/A**

OWNER

The owner certifies that he/she understands his/her responsibilities under ORC Rule and Regulations.

Rated boat velocities in knots							
Wind Velocity	6 kt	8 kt	10 kt	12 kt	14 kt	16 kt	20 kt
Beat Angles	45.0°	42.8°	42.0°	41.6°	40.9°	40.5°	40.7°
Beat VMG	2.88	3.49	3.95	4.34	4.63	4.75	4.74
52°	4.47	5.30	5.96	6.45	6.72	6.85	6.89
60°	4.76	5.60	6.26	6.67	6.90	7.04	7.12
75°	4.98	5.85	6.49	6.84	7.06	7.24	7.48
90°	5.14	6.18	6.80	7.05	7.17	7.30	7.70
110°	5.27	6.35	6.93	7.27	7.57	7.78	8.10
120°	5.14	6.23	6.87	7.23	7.57	7.93	8.45
135°	4.68	5.74	6.58	7.02	7.35	7.70	8.47
150°	3.99	5.02	5.90	6.62	7.02	7.32	8.00
Run VMG	3.46	4.34	5.12	5.81	6.43	6.88	7.49
Gybe Angles	146.0°	150.5°	152.0°	157.0°	180.0°	180.0°	180.0°

Time Allowances in secs/NM							
Wind Velocity	6 kt	8 kt	10 kt	12 kt	14 kt	16 kt	20 kt
Beat VMG	1251.2	1032.0	912.1	828.7	777.0	758.2	758.8
52°	805.0	679.6	604.3	557.9	535.8	525.5	522.2
60°	756.4	643.4	574.9	539.9	521.8	511.5	505.5
75°	722.9	614.9	554.4	526.5	509.9	497.5	481.2
90°	700.3	582.8	529.2	510.6	501.9	492.9	467.5
110°	683.1	566.6	519.2	495.2	475.5	462.7	444.5
120°	700.6	578.2	524.0	498.0	475.7	454.3	426.0
135°	768.5	627.3	547.5	512.9	490.1	467.8	425.3
150°	901.5	717.5	610.2	544.2	513.1	491.7	450.3
Run VMG	1041.0	828.6	703.4	619.2	560.3	523.1	480.7
Selected Courses							
Windward / Leeward	1146.1	930.3	807.8	724.0	668.6	640.6	619.8
All purpose	880.1	723.9	639.1	588.6	556.1	538.6	518.8

Single Number Scoring Options		
Course	Time On Distance	Time On Time
Windward / Leeward	757.9	0.7917
All purpose	611.8	0.9807

Custom scoring options for Estonia

Single Number	Time On Distance	Time On Time
Coastal/Long Distance	668.7	0.8972
Triple Number Coastal/Long Distance Low	801.9	0.7482
Triple Number Coastal/Long Distance Medium	608.6	0.9859
Triple Number Coastal/Long Distance High	535.6	1.1203
Triple Number Windward/Leeward Low	1038.2	0.5779
Triple Number Windward/Leeward Medium	755.3	0.7944
Triple Number Windward/Leeward High	639.8	0.9378

Performance Curve	6 kt	8 kt	10 kt	12 kt	14 kt	16 kt	20 kt
Coastal/Long Distance	1135.6	870.3	723.3	629.9	578.5	544.8	495.3