

GPH = 616.2 **CDL = 9.057**

BOAT

Class **ARCONA 340**
Designer **STEFAN QVIBERG**
Builder **ARCONA YACHTS**
Age Date **05/2010**
Series Date **05/2009**
Offset File **EST646-2019b.off**

HULL

Length Overall **10.405 m**
Maximum Beam **3.476 m**
Draft **2.113 m**
Displacement **4,621 kg**
DLR **5.7923**
IMS Division **Cruiser/Racer**
Dynamic Allowance **0.147%**
Age Allowance **0.390%**

PROPELLER

Installation **Strut**
Type **Folding 2 blades**
Diameter **0.425m**

CREW

Maximum weight **700 kg**
Minimum weight **525 kg * when applied**
Non Manual Power **No**
Crew Arm Extension

SAIL AREAS (m²)

	Measured	Rated
Mainsail	37.97	38.71
Headsail Luffed	32.34	32.34
Headsail Flying		
Symmetric	90.16	90.16
Asymmetric	106.25	106.25

** All asymmetric spinnakers with SHW/SFL > 85%*

SAIL LIMITATIONS

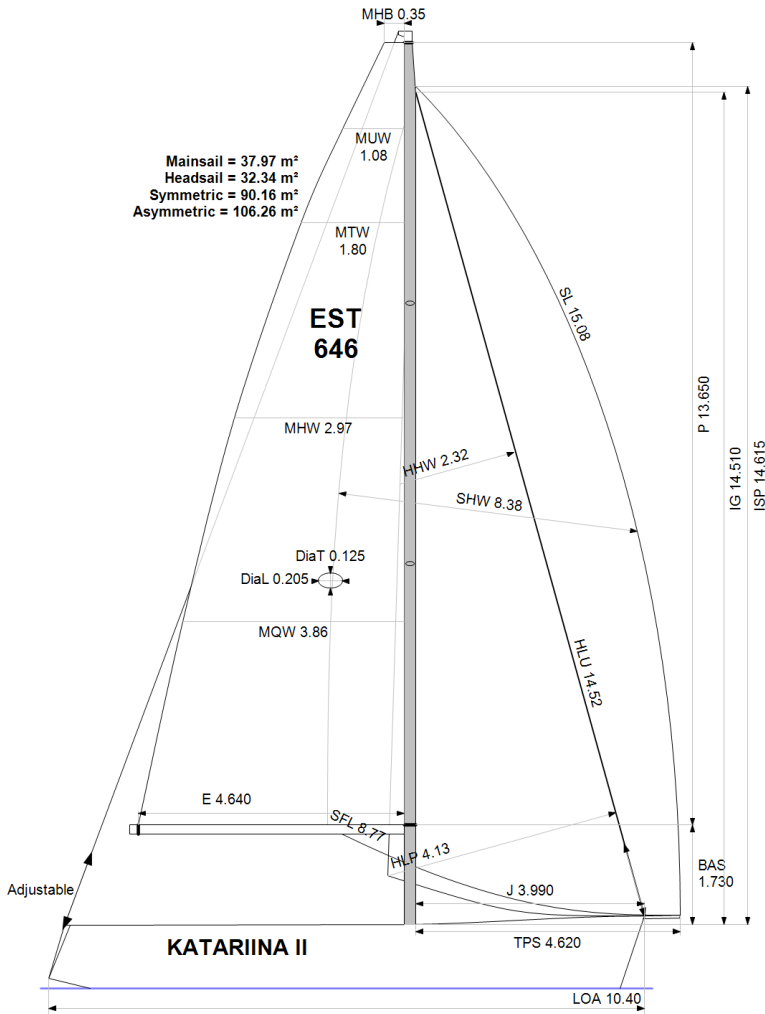
Headsails **5**
Spinnakers **4** * Asymmetric SHALL NOT be tacked on the pole

STABILITY

Righting Moment **137.9 kg·m**
Stability Index **N/A**

OWNER

The owner certifies that he/she understands his/her responsibilities under ORC Rule and Regulations.



Rated boat velocities in knots

Wind Velocity	6 kt	8 kt	10 kt	12 kt	14 kt	16 kt	20 kt
Beat Angles	43.1°	41.3°	40.1°	38.6°	38.6°	38.6°	39.0°
Beat VMG	3.44	4.18	4.76	5.04	5.14	5.17	5.26
52°	5.27	6.25	6.89	7.16	7.25	7.29	7.39
60°	5.58	6.53	7.07	7.34	7.46	7.52	7.62
75°	5.83	6.74	7.20	7.52	7.78	7.94	8.06
90°	5.82	6.89	7.39	7.61	7.89	8.22	8.66
110°	5.89	6.98	7.52	8.01	8.41	8.69	9.20
120°	5.72	6.85	7.42	7.93	8.47	9.02	9.80
135°	5.12	6.31	7.10	7.57	8.06	8.58	9.93
150°	4.33	5.42	6.37	7.02	7.46	7.88	8.86
Run VMG	3.75	4.70	5.52	6.18	6.81	7.29	8.11
Gybe Angles	144.0°	147.5°	148.5°	158.0°	176.0°	180.0°	180.0°

Time Allowances in secs/NM							
Wind Velocity	6 kt	8 kt	10 kt	12 kt	14 kt	16 kt	20 kt
Beat VMG	1047.7	860.7	756.9	714.6	700.6	695.8	684.6
52°	683.1	575.7	522.7	502.8	496.5	493.6	487.0
60°	645.0	551.1	509.5	490.5	482.3	478.4	472.4
75°	617.9	534.3	499.7	478.6	462.4	453.1	446.7
90°	618.9	522.2	487.1	472.9	456.5	438.0	415.9
110°	611.7	515.9	478.5	449.6	427.9	414.5	391.3
120°	629.7	525.9	484.9	454.2	425.2	399.1	367.5
135°	703.1	570.7	507.2	475.8	446.8	419.7	362.4
150°	832.1	663.8	564.9	513.0	482.7	456.6	406.2
Run VMG	960.8	766.5	652.3	582.3	528.7	493.7	444.0
Selected Courses							
Windward / Leeward	1004.3	813.6	704.6	648.5	614.6	594.8	564.3
All purpose	771.0	635.9	566.8	531.8	509.7	493.2	468.1

Single Number Scoring Options		
Course	Time On Distance	Time On Time
Windward / Leeward	677.6	0.8854
All purpose	549.7	1.0915

Custom scoring options for Estonia

Single Number	Time On Distance	Time On Time
Coastal/Long Distance	599.4	1.0010
Triple Number Coastal/Long Distance Low	703.5	0.8529
Triple Number Coastal/Long Distance Medium	546.6	1.0977
Triple Number Coastal/Long Distance High	487.9	1.2297
Triple Number Windward/Leeward Low	909.0	0.6601
Triple Number Windward/Leeward Medium	672.5	0.8922
Triple Number Windward/Leeward High	588.3	1.0199

Performance Curve	6 kt	8 kt	10 kt	12 kt	14 kt	16 kt	20 kt
Coastal/Long Distance	999.9	764.0	636.8	567.7	529.5	498.2	446.6