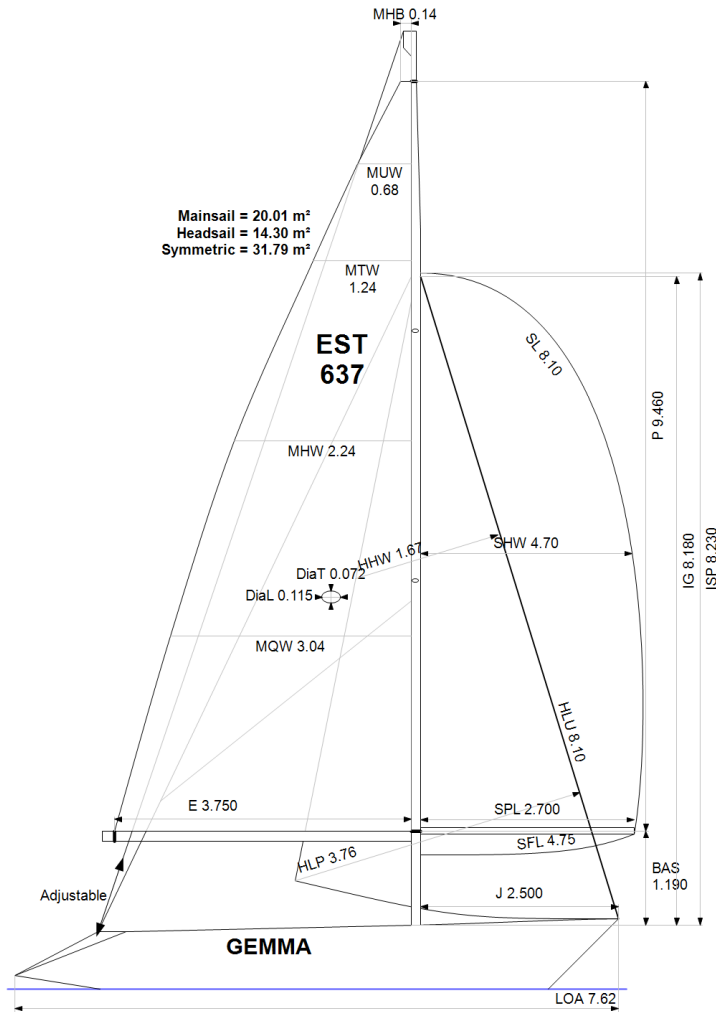


**GPH = 717.5** **CDL = 6.318**



**BOAT**

Class **POLARIS**  
Designer **SET**  
Builder **SET**  
Age Date **01/1992**  
Series Date **01/1992**  
Offset File **G2.BOF**

**HULL**

Length Overall **7.620 m**  
Maximum Beam **2.706 m**  
Draft **1.547 m**  
Displacement **1,567 kg**  
DLR **7.8637**  
IMS Division **Performance**  
Dynamic Allowance **0.000%**  
Age Allowance **0.487%**

**PROPELLER**

Installation **No Propeller**  
Type **N/A**  
Diameter **N/A**

**CREW**

Maximum weight **350 kg**  
Minimum weight **263 kg \* when applied**  
Non Manual Power **No**  
Crew Arm Extension

**SAIL AREAS (m<sup>2</sup>)**

	Measured	Rated
Mainsail	<b>20.01</b>	<b>20.36</b>
Headsail Luffed	<b>14.30</b>	<b>14.30</b>
Headsail Flying		
Symmetric	<b>31.79</b>	<b>31.79</b>
Asymmetric		

**SAIL LIMITATIONS**

Headsails **5**  
Spinnakers **4**

**STABILITY**

Righting Moment **28.9 kg·m**  
Stability Index **N/A**

**OWNER**

*The owner certifies that he/she understands his/her responsibilities under ORC Rule and Regulations.*

Rated boat velocities in knots							
Wind Velocity	6 kt	8 kt	10 kt	12 kt	14 kt	16 kt	20 kt
Beat Angles	41.6°	41.3°	38.6°	37.5°	37.1°	37.3°	38.3°
Beat VMG	3.14	3.75	4.19	4.36	4.42	4.44	4.39
52°	4.75	5.52	5.87	6.04	6.12	6.16	6.15
60°	5.00	5.68	5.99	6.19	6.31	6.37	6.41
75°	5.17	5.80	6.10	6.36	6.58	6.73	6.84
90°	5.11	5.84	6.23	6.54	6.73	6.95	7.27
110°	5.01	5.83	6.25	6.65	7.02	7.35	7.76
120°	4.82	5.71	6.15	6.54	6.92	7.29	8.11
135°	4.32	5.26	5.89	6.26	6.63	7.00	7.80
150°	3.67	4.61	5.43	5.94	6.29	6.65	7.34
Run VMG	3.17	4.00	4.74	5.41	5.91	6.24	6.92
Gybe Angles	148.0°	152.0°	155.0°	180.0°	180.0°	180.0°	180.0°

Time Allowances in secs/NM							
Wind Velocity	6 kt	8 kt	10 kt	12 kt	14 kt	16 kt	20 kt
Beat VMG	1145.4	959.9	859.6	824.8	814.2	811.6	819.3
52°	757.9	652.5	613.8	596.1	588.5	584.7	585.3
60°	720.4	633.4	601.4	581.8	570.5	564.7	561.9
75°	696.5	621.2	590.4	566.3	547.2	535.2	526.6
90°	705.0	616.1	578.2	550.5	535.0	518.3	495.3
110°	718.4	617.0	575.8	541.4	513.0	490.0	464.1
120°	747.4	630.3	585.1	550.5	520.4	493.7	444.1
135°	834.3	684.0	611.5	575.3	542.6	514.2	461.5
150°	982.0	780.8	662.7	605.7	572.4	541.7	490.4
Run VMG	1133.9	901.0	760.0	665.0	609.6	576.5	520.4
Selected Courses							
Windward / Leeward	1139.7	930.5	809.8	744.9	711.9	694.1	669.9
All purpose	879.0	735.9	663.1	622.2	599.6	583.2	560.9

Single Number Scoring Options		
Course	Time On Distance	Time On Time
Windward / Leeward	780.7	0.7685
All purpose	643.1	0.9330

### Custom scoring options for Estonia

Single Number	Time On Distance	Time On Time
Coastal/Long Distance	698.5	0.8590
Triple Number Coastal/Long Distance Low	807.4	0.7431
Triple Number Coastal/Long Distance Medium	639.7	0.9380
Triple Number Coastal/Long Distance High	578.9	1.0364
Triple Number Windward/Leeward Low	1035.0	0.5797
Triple Number Windward/Leeward Medium	773.7	0.7755
Triple Number Windward/Leeward High	689.4	0.8703

Performance Curve	6 kt	8 kt	10 kt	12 kt	14 kt	16 kt	20 kt
Coastal/Long Distance	1139.1	877.4	738.1	662.9	623.4	590.7	533.6