

GPH = **621.9** CDL = **9.672**

BOAT

Class **Elan 380**
Designer **Humphreys**
Builder **Elan**
Age Date **07/2009**
Series Date **04/2008**
Offset File **CLel380sk.off**

HULL

Length Overall **11.347 m**
Maximum Beam **3.630 m**
Draft **2.026 m**
Displacement **7,769 kg**
DLR **5.9009**
IMS Division **Cruiser/Racer**
Dynamic Allowance **0.285%**
Age Allowance **0.422%**

PROPELLER

Installation **Strut**
Type **Folding 2 blades**
Diameter **0.410m**

CREW

Maximum weight **660 kg**
Minimum weight **495 kg * when applied**
Non Manual Power **No**
Crew Arm Extension

SAIL AREAS (m²)

	Measured	Rated
Mainsail	40.36	41.08
Headsail Luffed	42.12	42.12
Headsail Flying		
Symmetric	104.81	104.81
Asymmetric		

SAIL LIMITATIONS

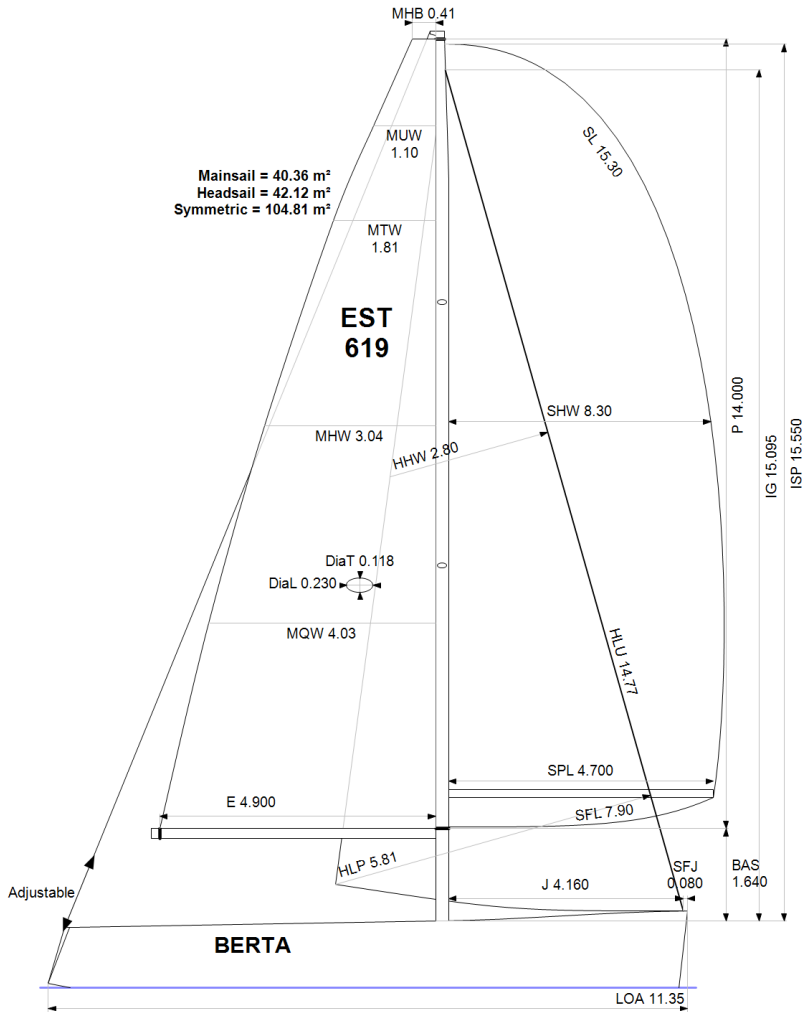
Headsails **5**
Spinnakers **4**

STABILITY

Righting Moment **145.0 kg·m**
Stability Index **N/A**

OWNER

The owner certifies that he/she understands his/her responsibilities under ORC Rule and Regulations.



Rated boat velocities in knots							
Wind Velocity	6 kt	8 kt	10 kt	12 kt	14 kt	16 kt	20 kt
Beat Angles	43.5°	41.3°	41.3°	41.3°	40.1°	39.8°	39.8°
Beat VMG	3.40	4.10	4.64	4.96	5.10	5.16	5.18
52°	5.23	6.17	6.89	7.23	7.36	7.41	7.44
60°	5.55	6.50	7.14	7.44	7.57	7.63	7.67
75°	5.81	6.77	7.32	7.61	7.80	7.93	8.03
90°	5.76	6.76	7.36	7.67	7.90	8.11	8.46
110°	5.66	6.85	7.52	7.88	8.16	8.35	8.70
120°	5.52	6.71	7.45	7.85	8.20	8.57	9.07
135°	5.02	6.16	7.09	7.60	7.96	8.33	9.21
150°	4.24	5.34	6.30	7.11	7.59	7.92	8.66
Run VMG	3.67	4.63	5.46	6.21	6.84	7.39	8.07
Gybe Angles	145.0°	149.5°	151.0°	155.0°	170.0°	180.0°	180.0°

Time Allowances in secs/NM							
Wind Velocity	6 kt	8 kt	10 kt	12 kt	14 kt	16 kt	20 kt
Beat VMG	1059.6	877.2	776.6	726.4	705.8	697.2	694.7
52°	688.8	583.1	522.3	497.8	489.4	485.5	484.1
60°	649.2	553.9	504.2	484.1	475.5	471.7	469.3
75°	619.2	531.5	491.7	472.8	461.4	453.9	448.1
90°	624.9	532.2	489.2	469.7	455.6	443.7	425.5
110°	636.1	525.8	478.8	456.9	441.2	431.3	413.9
120°	652.3	536.8	483.4	458.8	438.9	420.0	397.1
135°	717.3	584.0	507.8	473.4	452.3	432.0	390.9
150°	848.6	673.8	571.6	506.2	474.5	454.6	415.9
Run VMG	979.9	778.1	659.7	579.4	526.0	487.0	446.1
Selected Courses							
Windward / Leeward	1019.8	827.6	718.1	652.9	615.9	592.1	570.4
All purpose	783.5	645.9	571.9	532.7	511.1	495.9	478.4

Single Number Scoring Options		
Course	Time On Distance	Time On Time
Windward / Leeward	684.2	0.8770
All purpose	553.7	1.0837

Custom scoring options for Estonia

Single Number	Time On Distance	Time On Time
Coastal/Long Distance	604.1	0.9932
Triple Number Coastal/Long Distance Low	714.7	0.8395
Triple Number Coastal/Long Distance Medium	549.8	1.0913
Triple Number Coastal/Long Distance High	493.1	1.2167
Triple Number Windward/Leeward Low	923.6	0.6496
Triple Number Windward/Leeward Medium	680.0	0.8824
Triple Number Windward/Leeward High	589.9	1.0171

Performance Curve	6 kt	8 kt	10 kt	12 kt	14 kt	16 kt	20 kt
Coastal/Long Distance	1015.8	776.9	645.8	569.2	530.4	501.2	457.4