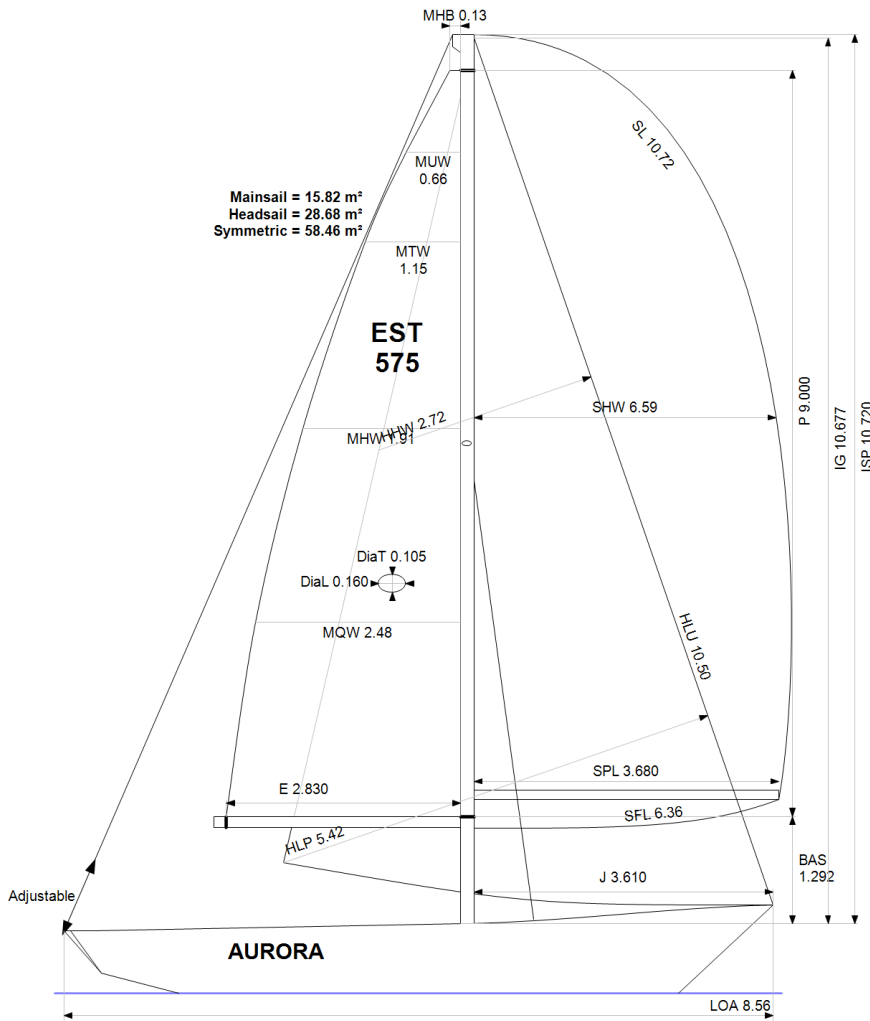


GPH = 730.0 **CDL = 6.525**



BOAT

Class **COMPIS 28**
Designer
Builder **Karlstad**
Age Date **01/1974**
Series Date **01/1968**
Offset File **e186.bof**

HULL

Length Overall **8.560 m**
Maximum Beam **2.920 m**
Draft **1.563 m**
Displacement **3,100 kg**
DLR **9.0887**
IMS Division **Cruiser/Racer**
Dynamic Allowance **0.281%**
Age Allowance **0.487%**

PROPELLER

Installation **Shaft exposed**
Type **Folding 2 blades**
Diameter **0.365m**

CREW

Maximum weight **500 kg**
Minimum weight **375 kg * when applied**
Non Manual Power **No**
Crew Arm Extension

SAIL AREAS (m²)

	Measured	Rated
Mainsail	15.82	16.13
Headsail Luffed	28.68	28.68
Headsail Flying		
Symmetric	58.46	58.46
Asymmetric		

SAIL LIMITATIONS

Headsails **5**
Spinnakers **4**

STABILITY

Righting Moment **37.9 kg·m**
Stability Index **N/A**

OWNER

The owner certifies that he/she understands his/her responsibilities under ORC Rule and Regulations.

Rated boat velocities in knots							
Wind Velocity	6 kt	8 kt	10 kt	12 kt	14 kt	16 kt	20 kt
Beat Angles	42.0°	41.6°	41.8°	40.1°	39.8°	39.4°	39.9°
Beat VMG	3.01	3.53	3.95	4.22	4.31	4.36	4.35
52°	4.54	5.33	5.78	6.00	6.11	6.16	6.19
60°	4.78	5.58	5.94	6.13	6.26	6.34	6.40
75°	4.96	5.72	6.05	6.25	6.43	6.58	6.77
90°	4.90	5.70	6.13	6.37	6.50	6.69	7.03
110°	4.89	5.82	6.24	6.54	6.83	7.07	7.32
120°	4.74	5.72	6.19	6.50	6.82	7.13	7.57
135°	4.36	5.31	5.98	6.31	6.61	6.94	7.55
150°	3.77	4.67	5.49	6.03	6.32	6.60	7.19
Run VMG	3.27	4.05	4.77	5.41	5.92	6.24	6.78
Gybe Angles	148.5°	152.0°	152.0°	168.0°	180.0°	180.0°	180.0°

Time Allowances in secs/NM							
Wind Velocity	6 kt	8 kt	10 kt	12 kt	14 kt	16 kt	20 kt
Beat VMG	1195.7	1021.0	910.7	854.1	835.1	826.1	827.7
52°	792.2	675.0	622.4	600.4	589.5	584.3	581.5
60°	753.2	645.1	606.4	587.5	575.3	567.7	562.5
75°	726.1	629.3	594.7	575.6	560.1	547.2	532.0
90°	734.1	631.3	587.2	565.3	554.0	538.0	512.3
110°	736.9	618.7	577.3	550.7	527.4	509.1	491.5
120°	758.8	628.9	582.0	553.8	527.9	505.0	475.6
135°	825.7	678.0	601.9	570.2	544.4	519.1	477.1
150°	953.7	770.6	656.2	597.5	569.4	545.6	500.7
Run VMG	1101.2	889.3	754.8	665.9	607.9	577.2	531.3
Selected Courses							
Windward / Leeward	1148.5	955.2	832.7	760.0	721.5	701.6	679.5
All purpose	895.0	751.4	674.5	632.8	608.6	592.5	572.2

Single Number Scoring Options		
Course	Time On Distance	Time On Time
Windward / Leeward	795.9	0.7538
All purpose	654.2	0.9171

Custom scoring options for Estonia

Single Number	Time On Distance	Time On Time
Coastal/Long Distance	711.2	0.8436
Triple Number Coastal/Long Distance Low	823.2	0.7289
Triple Number Coastal/Long Distance Medium	650.5	0.9223
Triple Number Coastal/Long Distance High	588.9	1.0188
Triple Number Windward/Leeward Low	1051.9	0.5704
Triple Number Windward/Leeward Medium	790.9	0.7586
Triple Number Windward/Leeward High	698.3	0.8592

Performance Curve	6 kt	8 kt	10 kt	12 kt	14 kt	16 kt	20 kt
Coastal/Long Distance	1143.7	897.9	754.8	673.5	632.5	600.0	547.9