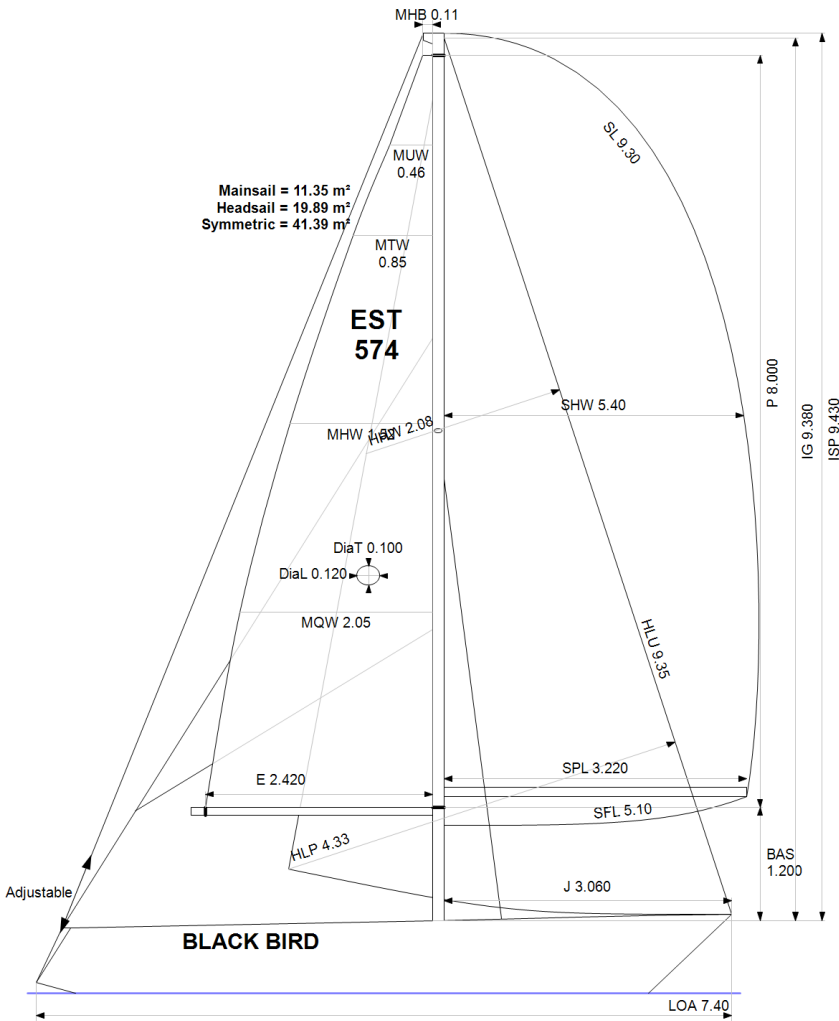


GPH = **787.4** CDL = **5.626**



BOAT

Class **BIRDIE 24**
Designer **Harry Becker**
Builder
Age Date **01/1976**
Series Date **01/1976**
Offset File **BIRDIE24.off**

HULL

Length Overall **7.400 m**
Maximum Beam **2.412 m**
Draft **1.246 m**
Displacement **1,910 kg**
DLR **8.4755**
IMS Division **Cruiser/Racer**
Dynamic Allowance **0.430%**
Age Allowance **0.487%**

PROPELLER

Installation **No Propeller**
Type **N/A**
Diameter **N/A**

CREW

Maximum weight **310 kg**
Minimum weight **225 kg * when applied**
Non Manual Power **No**
Crew Arm Extension

SAIL AREAS (m²)

	Measured	Rated
Mainsail	11.35	11.50
Headsail Luffed	19.89	19.89
Headsail Flying		
Symmetric	41.39	41.38
Asymmetric		

SAIL LIMITATIONS

Headsails **5 * Woven polyester sails**
Spinnakers **4**

STABILITY

Righting Moment **36.4 kg·m**
Stability Index **N/A**

OWNER

The owner certifies that he/she understands his/her responsibilities under ORC Rule and Regulations.

Rated boat velocities in knots							
Wind Velocity	6 kt	8 kt	10 kt	12 kt	14 kt	16 kt	20 kt
Beat Angles	43.1°	42.0°	42.8°	41.3°	40.3°	40.1°	41.1°
Beat VMG	2.67	3.16	3.53	3.84	4.02	4.07	4.03
52°	4.09	4.80	5.30	5.57	5.73	5.79	5.80
60°	4.33	5.08	5.49	5.71	5.87	5.97	6.01
75°	4.52	5.27	5.63	5.84	6.03	6.20	6.39
90°	4.48	5.34	5.78	6.03	6.18	6.30	6.66
110°	4.58	5.45	5.86	6.18	6.50	6.76	7.04
120°	4.46	5.36	5.81	6.13	6.46	6.78	7.28
135°	4.10	4.99	5.61	5.94	6.25	6.58	7.20
150°	3.56	4.43	5.17	5.67	5.96	6.25	6.85
Run VMG	3.08	3.84	4.51	5.13	5.60	5.90	6.46
Gybe Angles	149.0°	152.0°	154.0°	174.0°	180.0°	180.0°	180.0°

Time Allowances in secs/NM							
Wind Velocity	6 kt	8 kt	10 kt	12 kt	14 kt	16 kt	20 kt
Beat VMG	1350.6	1140.8	1020.0	936.3	895.2	883.6	893.6
52°	881.0	750.2	679.7	646.3	628.4	621.3	620.3
60°	830.9	709.0	656.3	630.3	613.0	602.8	599.3
75°	797.2	683.6	639.7	616.1	597.0	580.3	563.4
90°	804.4	674.6	623.0	596.6	582.9	571.8	540.6
110°	786.5	660.3	614.1	582.7	554.0	532.4	511.7
120°	806.7	671.3	619.4	587.2	557.1	530.6	494.6
135°	877.4	721.2	641.7	606.0	575.9	546.9	500.0
150°	1012.3	813.5	696.6	635.3	604.0	576.3	525.7
Run VMG	1168.9	938.0	797.5	701.8	642.8	610.6	557.6
Selected Courses							
Windward / Leeward	1259.7	1039.4	908.8	819.1	769.0	747.1	725.6
All purpose	978.2	815.4	730.6	678.9	646.8	628.6	607.3

Single Number Scoring Options		
Course	Time On Distance	Time On Time
Windward / Leeward	859.2	0.6983
All purpose	702.8	0.8537

Custom scoring options for Estonia

Single Number	Time On Distance	Time On Time
Coastal/Long Distance	764.8	0.7845
Triple Number Coastal/Long Distance Low	896.7	0.6691
Triple Number Coastal/Long Distance Medium	699.5	0.8578
Triple Number Coastal/Long Distance High	625.1	0.9598
Triple Number Windward/Leeward Low	1149.6	0.5219
Triple Number Windward/Leeward Medium	854.8	0.7019
Triple Number Windward/Leeward High	744.5	0.8059

Performance Curve	6 kt	8 kt	10 kt	12 kt	14 kt	16 kt	20 kt
Coastal/Long Distance	1250.6	975.0	820.3	723.7	672.4	636.7	579.3