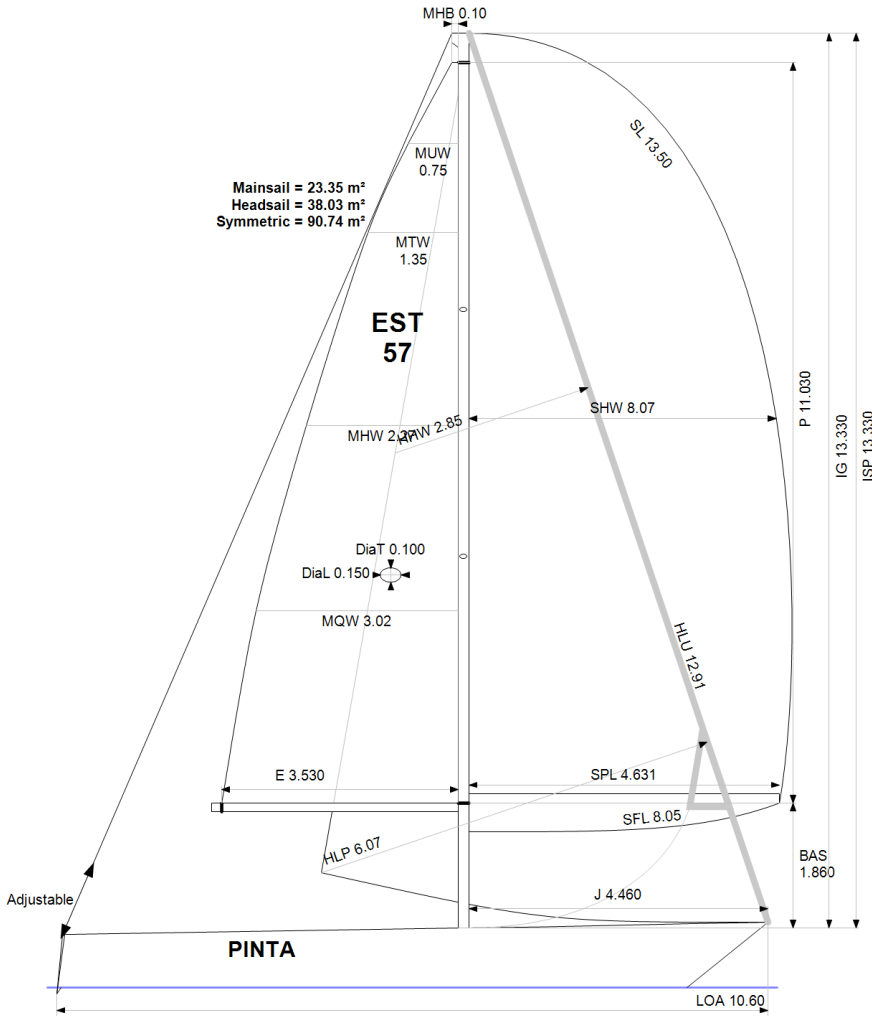


GPH = 716.5 CDL = 7.715



BOAT

Class **TAURUS**
Designer **Gogolkewich**
Builder **Teliga yard Poland**
Age Date **01/1975**
Series Date **01/1974**
Offset File **TAURUS-F.OFF**

HULL

Length Overall **10.600 m**
Maximum Beam **3.680 m**
Draft **2.093 m**
Displacement **7,900 kg**
DLR **8.7073**
IMS Division **Cruiser/Racer**
Dynamic Allowance **0.630%**
Age Allowance **0.487%**

PROPELLER

Installation **Shaft exposed**
Type **Feathering 2 blades**
Diameter **0.428m**

CREW

Maximum weight **550 kg**
Minimum weight **413 kg * when applied**
Non Manual Power
Crew Arm Extension

SAIL AREAS (m²)

| | Measured | Rated |
|-----------------|--------------|--------------|
| Mainsail | 23.35 | 23.76 |
| Headsail Luffed | 38.03 | 38.03 |
| Headsail Flying | | |
| Symmetric | 90.74 | 90.74 |
| Asymmetric | | |

SAIL LIMITATIONS

Headsails **1**
Spinnakers **4**

STABILITY

Righting Moment **200.9 kg·m**
Stability Index **N/A**

OWNER

The owner certifies that he/she understands his/her responsibilities under ORC Rule and Regulations.

| Rated boat velocities in knots | | | | | | | |
|--------------------------------|--------|--------|--------|--------|--------|--------|--------|
| Wind Velocity | 6 kt | 8 kt | 10 kt | 12 kt | 14 kt | 16 kt | 20 kt |
| Beat Angles | 44.3° | 42.8° | 41.6° | 41.6° | 40.9° | 39.0° | 37.5° |
| Beat VMG | 2.79 | 3.40 | 3.84 | 4.22 | 4.60 | 4.90 | 5.14 |
| 52° | 4.32 | 5.15 | 5.78 | 6.30 | 6.66 | 6.89 | 7.10 |
| 60° | 4.58 | 5.42 | 6.07 | 6.54 | 6.83 | 7.03 | 7.28 |
| 75° | 4.77 | 5.62 | 6.30 | 6.72 | 6.98 | 7.17 | 7.50 |
| 90° | 4.75 | 5.75 | 6.55 | 6.99 | 7.25 | 7.37 | 7.57 |
| 110° | 4.88 | 5.92 | 6.69 | 7.09 | 7.39 | 7.68 | 8.14 |
| 120° | 4.73 | 5.78 | 6.59 | 7.03 | 7.34 | 7.64 | 8.25 |
| 135° | 4.28 | 5.30 | 6.20 | 6.79 | 7.13 | 7.42 | 8.04 |
| 150° | 3.64 | 4.63 | 5.50 | 6.24 | 6.79 | 7.11 | 7.64 |
| Run VMG | 3.15 | 4.01 | 4.77 | 5.46 | 6.08 | 6.62 | 7.24 |
| Gybe Angles | 147.0° | 150.5° | 152.0° | 155.0° | 171.0° | 180.0° | 180.0° |

| Time Allowances in secs/NM | | | | | | | |
|----------------------------|--------|--------|-------|-------|-------|-------|-------|
| Wind Velocity | 6 kt | 8 kt | 10 kt | 12 kt | 14 kt | 16 kt | 20 kt |
| Beat VMG | 1291.1 | 1059.2 | 936.9 | 853.1 | 783.0 | 734.4 | 700.2 |
| 52° | 833.7 | 699.4 | 623.3 | 571.3 | 540.7 | 522.7 | 507.0 |
| 60° | 785.2 | 664.6 | 592.9 | 550.3 | 527.0 | 511.8 | 494.3 |
| 75° | 754.7 | 640.6 | 571.4 | 535.6 | 516.0 | 502.2 | 480.2 |
| 90° | 758.1 | 626.5 | 549.5 | 514.7 | 496.8 | 488.2 | 475.3 |
| 110° | 737.4 | 608.5 | 538.4 | 507.5 | 487.1 | 468.6 | 442.2 |
| 120° | 760.6 | 622.9 | 546.2 | 511.8 | 490.5 | 471.1 | 436.2 |
| 135° | 840.8 | 678.8 | 580.8 | 530.2 | 504.6 | 485.1 | 448.0 |
| 150° | 989.0 | 777.0 | 654.4 | 576.7 | 530.4 | 506.5 | 470.9 |
| Run VMG | 1142.0 | 897.2 | 754.5 | 659.2 | 592.5 | 544.0 | 497.0 |
| Selected Courses | | | | | | | |
| Windward / Leeward | 1216.5 | 978.2 | 845.7 | 756.1 | 687.7 | 639.2 | 598.6 |
| All purpose | 935.3 | 763.4 | 666.3 | 607.7 | 567.9 | 539.7 | 511.1 |

| Single Number Scoring Options | | |
|-------------------------------|------------------|--------------|
| Course | Time On Distance | Time On Time |
| Windward / Leeward | 786.0 | 0.7633 |
| All purpose | 631.8 | 0.9497 |

Custom scoring options for Estonia

| Single Number | Time On Distance | Time On Time |
|--|------------------|--------------|
| Coastal/Long Distance | 692.1 | 0.8669 |
| Triple Number Coastal/Long Distance Low | 849.4 | 0.7064 |
| Triple Number Coastal/Long Distance Medium | 630.3 | 0.9520 |
| Triple Number Coastal/Long Distance High | 536.0 | 1.1194 |
| Triple Number Windward/Leeward Low | 1097.3 | 0.5468 |
| Triple Number Windward/Leeward Medium | 787.4 | 0.7620 |
| Triple Number Windward/Leeward High | 636.1 | 0.9432 |

| Performance Curve | 6 kt | 8 kt | 10 kt | 12 kt | 14 kt | 16 kt | 20 kt |
|-----------------------|--------|-------|-------|-------|-------|-------|-------|
| Coastal/Long Distance | 1209.1 | 917.1 | 756.0 | 652.1 | 589.5 | 547.1 | 494.5 |