

GPH = **747.6** CDL = **6.477**

BOAT

Class **Finn Express 83**
Designer **Eivind Still**
Builder **Nycra**
Age Date **01/1981**
Series Date **01/1981**
Offset File **L5280.BOF**

HULL

Length Overall **8.319 m**
Maximum Beam **2.794 m**
Draft **1.415 m**
Displacement **2,267 kg**
DLR **6.7174**
IMS Division **Cruiser/Racer**
Dynamic Allowance **0.356%**
Age Allowance **0.487%**

PROPELLER

Installation **Shaft exposed**
Type **Folding 2 blades**
Diameter **0.380m**

CREW

Maximum weight **440 kg**
Minimum weight **330 kg** * when applied
Non Manual Power **No**
Crew Arm Extension

SAIL AREAS (m²)

	Measured	Rated
Mainsail	18.76	19.38
Headsail Luffed	16.73	16.73
Headsail Flying		
Symmetric	32.85	32.85
Asymmetric		

SAIL LIMITATIONS

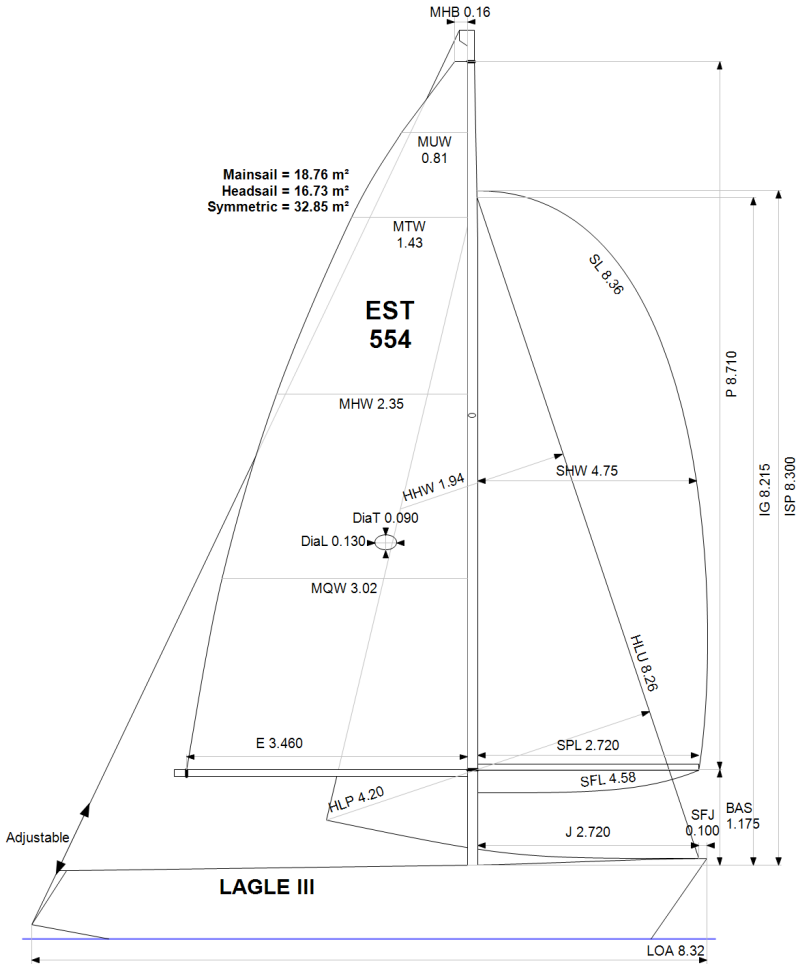
Headsails **5**
Spinnakers **4**

STABILITY

Righting Moment **32.4 kg·m**
Stability Index **N/A**

OWNER

The owner certifies that he/she understands his/her responsibilities under ORC Rule and Regulations.



Rated boat velocities in knots

Wind Velocity	6 kt	8 kt	10 kt	12 kt	14 kt	16 kt	20 kt
Beat Angles	44.3°	43.5°	43.1°	41.3°	40.5°	40.1°	40.9°
Beat VMG	2.78	3.34	3.79	4.14	4.32	4.38	4.35
52°	4.31	5.15	5.72	6.03	6.19	6.26	6.28
60°	4.58	5.46	5.95	6.20	6.37	6.46	6.51
75°	4.80	5.67	6.12	6.36	6.56	6.74	6.94
90°	4.75	5.70	6.23	6.53	6.78	6.94	7.31
110°	4.70	5.71	6.25	6.60	6.95	7.29	7.84
120°	4.54	5.54	6.16	6.51	6.85	7.21	7.95
135°	4.03	5.00	5.84	6.28	6.60	6.94	7.66
150°	3.46	4.40	5.23	5.92	6.31	6.60	7.26
Run VMG	2.99	3.82	4.55	5.25	5.86	6.25	6.84
Gybe Angles	149.0°	153.0°	154.5°	166.0°	180.0°	180.0°	180.0°

Time Allowances in secs/NM							
Wind Velocity	6 kt	8 kt	10 kt	12 kt	14 kt	16 kt	20 kt
Beat VMG	1296.5	1076.6	949.7	868.5	833.8	822.4	828.1
52°	835.9	699.7	629.0	596.7	581.2	575.2	573.5
60°	785.2	659.3	604.9	580.7	565.5	557.3	553.2
75°	750.2	635.1	588.4	566.0	548.6	533.7	518.8
90°	757.9	631.9	577.9	551.2	531.0	519.1	492.4
110°	765.4	630.6	575.6	545.6	518.1	493.6	459.0
120°	793.5	649.5	584.3	553.4	525.7	499.0	453.1
135°	892.9	719.9	616.7	573.5	545.8	519.0	469.8
150°	1041.9	819.0	688.7	607.7	570.9	545.1	495.9
Run VMG	1203.1	943.4	791.6	685.1	614.8	576.4	526.3
Selected Courses							
Windward / Leeward	1249.8	1010.0	870.7	776.8	724.3	699.4	677.2
All purpose	957.2	783.5	690.6	636.1	603.8	585.4	562.1

Single Number Scoring Options		
Course	Time On Distance	Time On Time
Windward / Leeward	819.3	0.7323
All purpose	662.6	0.9056

Custom scoring options for Estonia

Single Number	Time On Distance	Time On Time
Coastal/Long Distance	724.6	0.8280
Triple Number Coastal/Long Distance Low	870.3	0.6894
Triple Number Coastal/Long Distance Medium	658.5	0.9112
Triple Number Coastal/Long Distance High	581.3	1.0322
Triple Number Windward/Leeward Low	1129.9	0.5310
Triple Number Windward/Leeward Medium	814.4	0.7367
Triple Number Windward/Leeward High	697.3	0.8605

Performance Curve	6 kt	8 kt	10 kt	12 kt	14 kt	16 kt	20 kt
Coastal/Long Distance	1245.1	946.0	781.2	679.7	628.3	593.0	535.1

