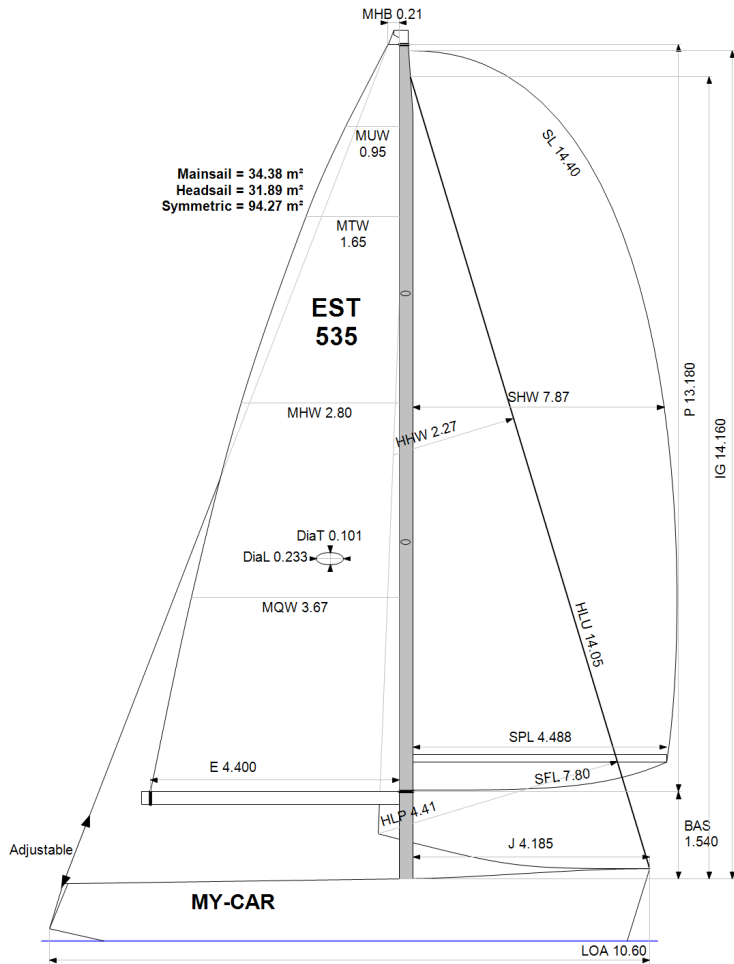


GPH = **634.1** CDL = **8.672**



Mainsail = 34.38 m<sup>2</sup>  
Headsail = 31.89 m<sup>2</sup>  
Symmetric = 94.27 m<sup>2</sup>

#### BOAT

Class **X-35 mod**  
Designer **JEPPESEN**  
Builder **X YACHTS**  
Age Date **09/2008**  
Series Date **09/2005**  
Offset File **x35-EST535.off**

#### HULL

Length Overall **10.600 m**  
Maximum Beam **3.250 m**  
Draft **2.007 m**  
Displacement **4,721 kg**  
DLR **5.7089**  
IMS Division **Cruiser/Racer**  
Dynamic Allowance **0.184%**  
Age Allowance **0.487%**

#### PROPELLER

Installation **Strut**  
Type **Folding 2 blades**  
Diameter **0.420m**

#### CREW

Maximum weight **170 kg**  
Minimum weight **120 kg** \* when applied  
Non Manual Power **No**  
Crew Arm Extension

#### SAIL AREAS (m<sup>2</sup>)

	Measured	Rated
Mainsail	<b>34.38</b>	<b>35.12</b>
Headsail Luffed	<b>31.89</b>	<b>31.89</b>
Headsail Flying		
Symmetric	<b>94.27</b>	<b>94.27</b>
Asymmetric		

#### SAIL LIMITATIONS

Headsails **5**  
Spinnakers **4**

#### STABILITY

Righting Moment **127.9 kg·m**  
Stability Index **N/A**

#### COMMENTS

Boat weight declared

#### OWNER

Rated boat velocities in knots							
Wind Velocity	6 kt	8 kt	10 kt	12 kt	14 kt	16 kt	20 kt
Beat Angles	42.8°	41.3°	40.9°	40.1°	39.8°	39.8°	40.3°
Beat VMG	3.33	4.06	4.56	4.78	4.86	4.89	4.94
52°	5.09	6.10	6.73	6.96	7.05	7.08	7.19
60°	5.38	6.39	6.95	7.19	7.28	7.32	7.40
75°	5.62	6.61	7.12	7.40	7.58	7.68	7.74
90°	5.57	6.62	7.12	7.45	7.72	7.98	8.30
110°	5.62	6.80	7.37	7.70	7.93	8.15	8.52
120°	5.49	6.68	7.31	7.75	8.19	8.48	8.96
135°	4.99	6.18	7.01	7.48	7.94	8.44	9.63
150°	4.22	5.33	6.31	7.04	7.47	7.89	8.86
Run VMG	3.65	4.61	5.47	6.19	6.80	7.29	8.09
Gybe Angles	145.0°	149.0°	151.0°	157.0°	180.0°	180.0°	180.0°

The owner certifies that he/she understands his/her responsibilities under ORC Rule and Regulations.

Time Allowances in secs/NM							
Wind Velocity	6 kt	8 kt	10 kt	12 kt	14 kt	16 kt	20 kt
Beat VMG	1079.6	886.5	788.7	753.2	740.6	735.8	728.4
52°	707.0	590.3	535.1	517.1	510.8	508.4	500.9
60°	668.9	563.2	517.7	500.8	494.8	492.1	486.2
75°	640.1	544.8	505.5	486.5	474.8	468.8	464.8
90°	646.9	543.4	505.3	483.4	466.1	451.3	433.9
110°	640.3	529.8	488.7	467.7	454.2	441.8	422.5
120°	655.5	539.3	492.3	464.3	439.4	424.6	401.6
135°	720.9	582.4	513.5	481.0	453.5	426.3	373.6
150°	853.0	675.7	570.3	511.6	481.7	456.1	406.4
Run VMG	985.0	780.2	658.0	581.9	529.7	494.2	444.8
Selected Courses							
Windward / Leeward	1032.3	833.4	723.3	667.5	635.1	615.0	586.6
All purpose	796.2	652.0	580.6	546.2	524.7	511.0	488.7

Single Number Scoring Options		
Course	Time On Distance	Time On Time
Windward / Leeward	697.7	0.8599
All purpose	565.5	1.0611

### Custom scoring options for Estonia

Single Number	Time On Distance	Time On Time
Coastal/Long Distance	616.2	0.9736
Triple Number Coastal/Long Distance Low	724.1	0.8286
Triple Number Coastal/Long Distance Medium	561.1	1.0693
Triple Number Coastal/Long Distance High	506.1	1.1856
Triple Number Windward/Leeward Low	932.8	0.6432
Triple Number Windward/Leeward Medium	691.9	0.8672
Triple Number Windward/Leeward High	609.4	0.9846

Performance Curve	6 kt	8 kt	10 kt	12 kt	14 kt	16 kt	20 kt
Coastal/Long Distance	1027.6	782.8	652.9	583.1	545.4	516.0	466.7

