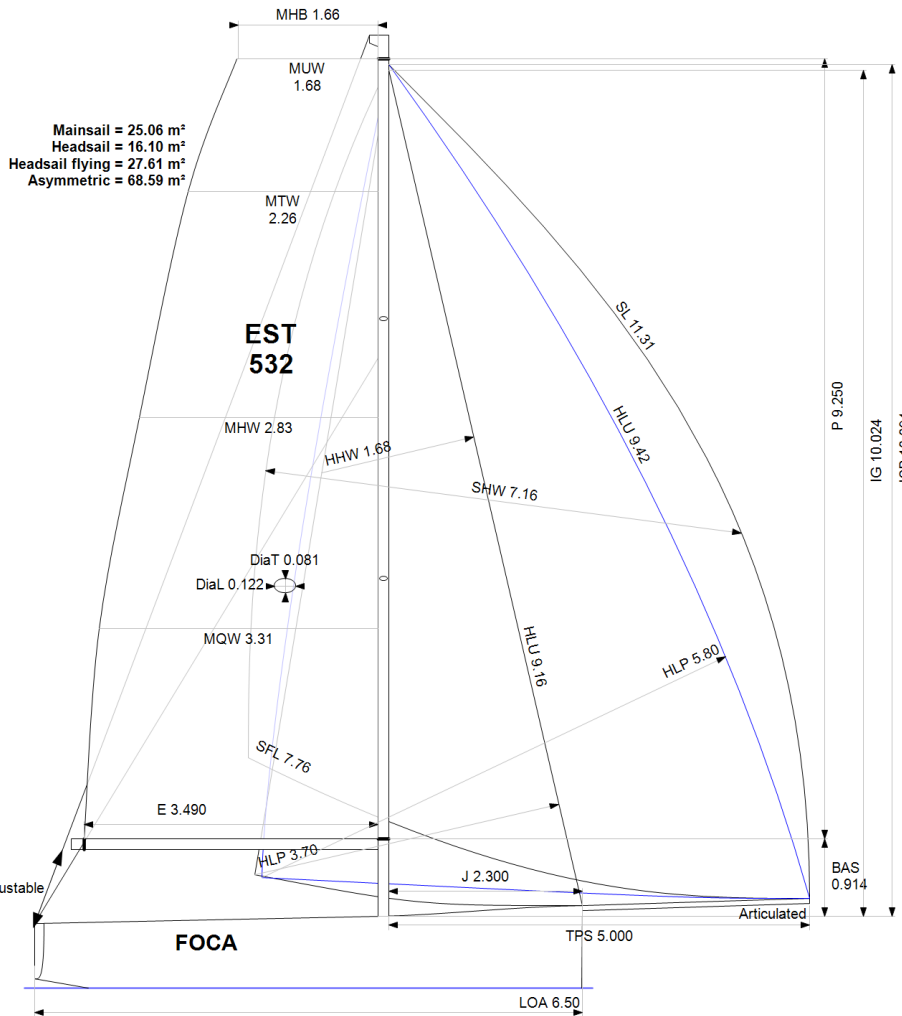


GPH = 684.2 **CDL = 6.320**



Mainsail = 25.06 m²
Headsail = 16.10 m²
Headsail flying = 27.61 m²
Asymmetric = 68.59 m²

**EST
532**

FOCA

Rated boat velocities in knots							
Wind Velocity	6 kt	8 kt	10 kt	12 kt	14 kt	16 kt	20 kt
Beat Angles	43.3°	40.1°	38.6°	39.0°	39.6°	40.3°	41.4°
Beat VMG	3.31	3.90	4.13	4.19	4.19	4.19	4.19
52°	5.04	5.70	5.90	5.99	6.05	6.09	6.11
60°	5.32	5.90	6.11	6.23	6.33	6.40	6.42
75°	5.55	6.07	6.43	6.65	6.76	6.87	6.99
90°	5.55	6.09	6.54	6.97	7.24	7.47	7.69
110°	5.48	6.20	6.72	7.21	7.59	7.97	8.76
120°	5.34	6.14	6.79	7.41	7.96	8.54	9.59
135°	4.81	5.80	6.43	7.10	7.97	8.95	11.28
150°	4.12	5.13	5.85	6.36	6.86	7.68	10.85
Run VMG	3.57	4.44	5.07	5.51	5.99	6.65	9.39
Gybe Angles	146.0°	148.5°	150.0°	148.0°	177.0°	143.5°	143.1°

BOAT

Class **Pogo 650**
Designer
Builder **Pogo Structures**
Age Date **01/2004**
Series Date **11/1995**
Offset File **cfolly.OFF**

HULL

Length Overall **6.500 m**
Maximum Beam **2.992 m**
Draft **1.597 m**
Displacement **1,100 kg**
DLR **3.4724**
IMS Division **Sportboat**
Dynamic Allowance **0.000%**
Age Allowance **0.487%**

PROPELLER

Installation **No Propeller**
Type **N/A**
Diameter **N/A**

CREW

Maximum weight **180 kg**
Minimum weight **120 kg * when applied**
Non Manual Power **No**
Crew Arm Extension

SAIL AREAS (m²)

	Measured	Rated
Mainsail	25.06	26.14
Headsail Luffed	16.10	16.10
Headsail Flying	27.61	27.61

Symmetric
Asymmetric **68.58** **68.58**
** 1 asymmetric(s) with SHW/SFL < 85%*

SAIL LIMITATIONS

Headsails **5**
Spinnakers **4**

STABILITY

Righting Moment **38.4 kg·m**
Stability Index **N/A**

OWNER

The owner certifies that he/she understands his/her responsibilities under ORC Rule and Regulations.

Time Allowances in secs/NM							
Wind Velocity	6 kt	8 kt	10 kt	12 kt	14 kt	16 kt	20 kt
Beat VMG	1088.4	922.2	871.4	858.8	860.0	858.5	860.1
52°	713.8	631.6	609.8	601.1	595.1	590.8	589.6
60°	676.2	610.1	588.9	578.1	568.9	562.7	560.7
75°	648.8	592.8	559.7	541.7	532.3	523.9	515.2
90°	648.1	591.4	550.5	516.3	497.2	481.8	468.2
110°	657.5	580.8	535.6	499.1	474.1	451.5	410.7
120°	673.9	586.6	530.3	485.9	452.1	421.6	375.5
135°	748.4	620.4	559.5	506.7	451.8	402.2	319.2
150°	874.0	702.2	615.3	566.1	525.1	468.5	331.9
Run VMG	1009.2	810.9	710.5	653.7	601.0	541.0	383.3
Selected Courses							
Windward / Leeward	1048.8	866.5	791.0	756.3	730.5	699.8	621.7
All purpose	809.5	690.9	638.1	607.5	585.5	561.9	515.3

Single Number Scoring Options		
Course	Time On Distance	Time On Time
Windward / Leeward	771.3	0.7779
All purpose	618.5	0.9701

Custom scoring options for Estonia

Single Number	Time On Distance	Time On Time
Coastal/Long Distance	671.7	0.8933
Triple Number Coastal/Long Distance Low	750.2	0.7998
Triple Number Coastal/Long Distance Medium	619.1	0.9691
Triple Number Coastal/Long Distance High	550.4	1.0902
Triple Number Windward/Leeward Low	957.7	0.6265
Triple Number Windward/Leeward Medium	770.6	0.7786
Triple Number Windward/Leeward High	678.2	0.8847

Performance Curve	6 kt	8 kt	10 kt	12 kt	14 kt	16 kt	20 kt
Coastal/Long Distance	1044.8	817.8	715.1	651.8	609.7	565.2	485.2