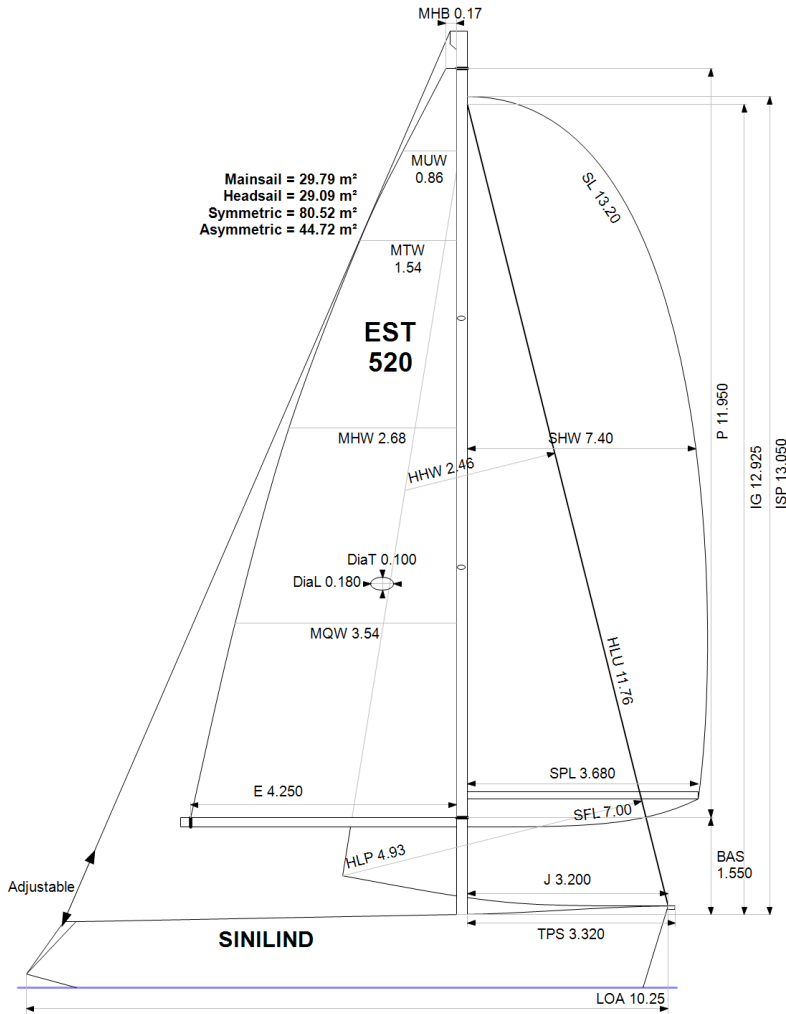


GPH = **668.7** CDL = **8.288**



BOAT

Class **Bavaria 33 CR**
Designer
Builder **Bavaria Yachtbau**
Age Date **05/2006**
Series Date **01/1993**
Offset File **MBAV33C.OFF**

HULL

Length Overall **10.250 m**
Maximum Beam **3.486 m**
Draft **1.802 m**
Displacement **5,679 kg**
DLR **7.0384**
IMS Division **Cruiser/Racer**
Dynamic Allowance **0.363%**
Age Allowance **0.487%**

PROPELLER

Installation **Strut**
Type **Folding 2 blades**
Diameter **0.408m**

CREW

Maximum weight **650 kg**
Minimum weight **488 kg * when applied**
Non Manual Power **No**
Crew Arm Extension

SAIL AREAS (m²)

	Measured	Rated
Mainsail	29.79	30.36
Headsail Luffed	29.09	29.09
Headsail Flying		
Symmetric	80.52	80.52
Asymmetric	44.72	56.40

* 1 asymmetric(s) with SHW/SFL < 85%

SAIL LIMITATIONS

Headsails **5**
Spinnakers **4 * Asymmetric SHALL NOT be tacked on the pole**

STABILITY

Righting Moment **137.2 kg·m**
Stability Index **N/A**

OWNER

The owner certifies that he/she understands his/her responsibilities under ORC Rule and Regulations.

Rated boat velocities in knots							
Wind Velocity	6 kt	8 kt	10 kt	12 kt	14 kt	16 kt	20 kt
Beat Angles	44.6°	42.4°	42.0°	41.3°	39.8°	39.0°	39.4°
Beat VMG	3.05	3.69	4.17	4.60	4.87	4.97	4.97
52°	4.73	5.61	6.29	6.71	6.94	7.07	7.12
60°	5.03	5.93	6.56	6.90	7.11	7.26	7.35
75°	5.26	6.24	6.83	7.14	7.36	7.51	7.76
90°	5.42	6.45	7.00	7.31	7.59	7.85	8.26
110°	5.29	6.41	7.04	7.40	7.74	8.08	8.56
120°	5.15	6.26	6.96	7.34	7.69	8.07	8.81
135°	4.69	5.73	6.62	7.11	7.44	7.80	8.57
150°	3.94	4.98	5.89	6.66	7.10	7.41	8.09
Run VMG	3.41	4.31	5.11	5.84	6.46	6.95	7.58
Gybe Angles	146.0°	151.0°	151.0°	156.5°	174.0°	180.0°	180.0°

Time Allowances in secs/NM							
Wind Velocity	6 kt	8 kt	10 kt	12 kt	14 kt	16 kt	20 kt
Beat VMG	1179.6	976.8	862.9	783.1	739.7	724.9	723.9
52°	760.9	642.0	572.4	536.4	518.4	509.5	505.9
60°	716.1	607.1	548.8	521.6	506.1	496.2	489.8
75°	685.0	577.1	527.3	504.3	489.3	479.1	463.8
90°	664.7	558.4	514.4	492.3	474.5	458.3	435.6
110°	680.2	561.2	511.5	486.6	465.1	445.4	420.8
120°	699.0	575.1	517.4	490.5	468.1	446.0	408.7
135°	768.1	628.2	543.6	506.6	483.6	461.7	420.0
150°	913.1	723.3	611.1	540.2	507.0	485.5	445.0
Run VMG	1054.4	835.5	705.2	616.4	557.4	518.0	475.1
Selected Courses							
Windward / Leeward	1117.0	906.2	784.1	699.7	648.5	621.4	599.5
All purpose	854.1	702.2	619.7	569.8	539.9	520.5	499.6

Single Number Scoring Options		
Course	Time On Distance	Time On Time
Windward / Leeward	735.0	0.8163
All purpose	592.8	1.0121

Custom scoring options for Estonia

Single Number	Time On Distance	Time On Time
Coastal/Long Distance	648.5	0.9253
Triple Number Coastal/Long Distance Low	778.1	0.7711
Triple Number Coastal/Long Distance Medium	590.0	1.0170
Triple Number Coastal/Long Distance High	517.5	1.1594
Triple Number Windward/Leeward Low	1011.6	0.5931
Triple Number Windward/Leeward Medium	732.2	0.8194
Triple Number Windward/Leeward High	620.0	0.9678

Performance Curve	6 kt	8 kt	10 kt	12 kt	14 kt	16 kt	20 kt
Coastal/Long Distance	1110.7	848.1	702.3	609.5	560.4	526.8	476.1