

GPH = 680.2 CDL = 8.413

BOAT

Class **BAVARIA 37 CR**
 Designer
 Builder **BAVARIA YACHTBAU**
 Age Date **07/2006**
 Series Date **04/2002**
 Offset File **BAVA37CL.OFF**

HULL

Length Overall **11.200 m**
 Maximum Beam **3.802 m**
 Draft **1.956 m**
 Displacement **7,198 kg**
 DLR **6.9576**
 IMS Division **Cruiser/Racer**
 Dynamic Allowance **0.400%**
 Age Allowance **0.487%**

PROPELLER

Installation **Strut**
 Type **Folding 2 blades**
 Diameter **0.430m**

CREW

Maximum weight **440 kg**
 Minimum weight **330 kg * when applied**
 Non Manual Power **No**
 Crew Arm Extension

SAIL AREAS (m²)

	Measured	Rated
Mainsail	32.71	33.14
Headsail Luffed	26.15	26.15
Headsail Flying		
Symmetric	87.29	87.29
Asymmetric	75.88	75.88

* All asymmetric spinnakers with SHW/SFL > 85%

SAIL LIMITATIONS

Headsails **1**
 Spinnakers **4 * Asymmetric SHALL NOT be tacked on the pole**

STABILITY

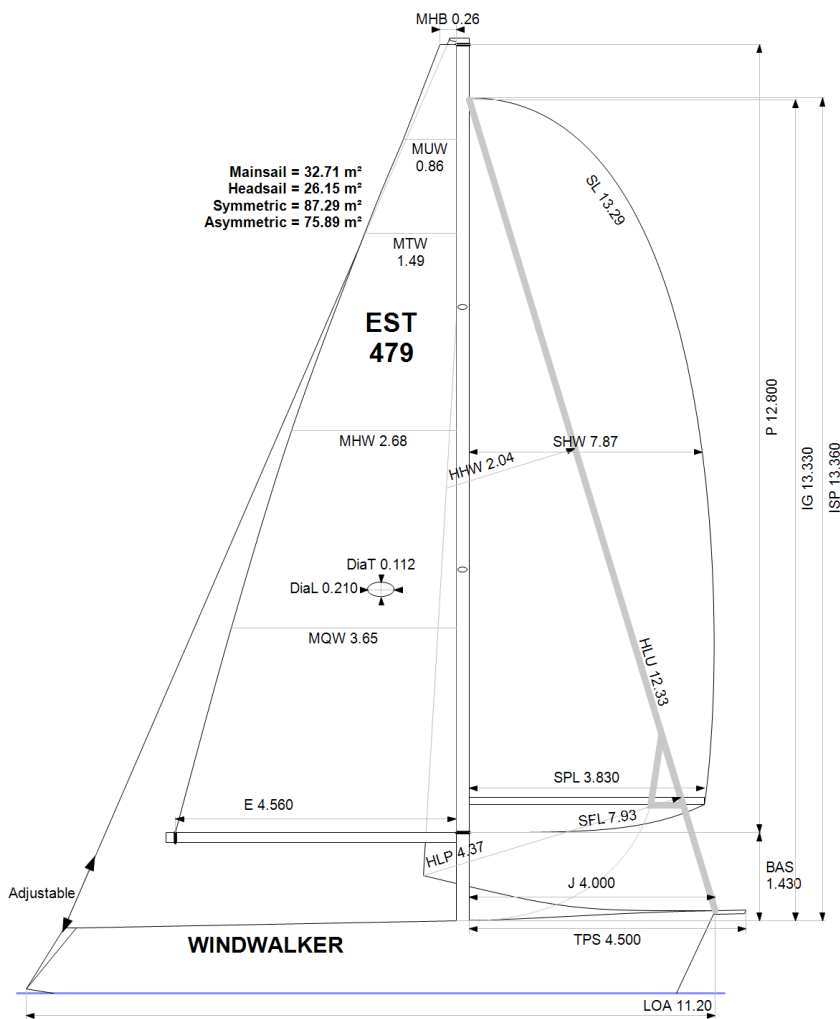
Righting Moment **214.0 kg·m**
 Stability Index **N/A**

COMMENTS

Ex. Galatea

OWNER

The owner certifies that he/she understands his/her responsibilities under ORC Rule and Regulations.



Rated boat velocities in knots

Wind Velocity	6 kt	8 kt	10 kt	12 kt	14 kt	16 kt	20 kt
Beat Angles	45.0°	43.5°	42.0°	41.6°	41.3°	39.8°	39.0°
Beat VMG	2.87	3.51	3.99	4.40	4.78	5.05	5.20
52°	4.47	5.36	6.03	6.60	6.98	7.20	7.39
60°	4.77	5.66	6.36	6.87	7.17	7.38	7.61
75°	5.00	5.90	6.65	7.11	7.37	7.55	7.90
90°	5.17	6.23	7.02	7.44	7.71	7.93	8.15
110°	5.26	6.37	7.13	7.53	7.86	8.21	8.82
120°	5.11	6.21	7.03	7.47	7.80	8.16	8.91
135°	4.62	5.68	6.62	7.21	7.57	7.89	8.64
150°	3.86	4.91	5.85	6.67	7.20	7.54	8.17
Run VMG	3.34	4.25	5.06	5.81	6.45	7.01	7.68
Gybe Angles	146.0°	150.0°	151.0°	155.0°	168.0°	180.0°	180.0°

Time Allowances in secs/NM							
Wind Velocity	6 kt	8 kt	10 kt	12 kt	14 kt	16 kt	20 kt
Beat VMG	1254.8	1025.0	902.0	818.2	753.8	713.2	692.2
52°	804.7	672.2	597.1	545.7	516.0	499.9	487.2
60°	754.1	636.6	566.4	524.3	501.8	487.9	472.9
75°	720.7	610.1	541.4	506.3	488.7	477.0	455.8
90°	696.0	577.7	512.6	484.0	466.7	454.2	441.9
110°	685.0	565.2	504.7	477.9	457.8	438.7	408.0
120°	704.8	579.9	512.0	482.2	461.4	441.0	404.1
135°	779.6	634.1	543.8	499.3	475.8	456.0	416.8
150°	933.2	733.2	615.8	539.6	500.0	477.7	440.7
Run VMG	1077.6	846.6	710.8	619.3	558.4	513.5	468.7
Selected Courses							
Windward / Leeward	1166.2	935.8	806.4	718.7	656.1	613.4	580.4
All purpose	888.6	724.5	632.1	576.2	539.3	513.3	487.5

Single Number Scoring Options		
Course	Time On Distance	Time On Time
Windward / Leeward	750.4	0.7996
All purpose	599.7	1.0005

Custom scoring options for Estonia

Single Number	Time On Distance	Time On Time
Coastal/Long Distance	658.0	0.9119
Triple Number Coastal/Long Distance Low	806.6	0.7439
Triple Number Coastal/Long Distance Medium	598.0	1.0034
Triple Number Coastal/Long Distance High	510.1	1.1762
Triple Number Windward/Leeward Low	1051.0	0.5709
Triple Number Windward/Leeward Medium	750.4	0.7996
Triple Number Windward/Leeward High	611.7	0.9809

Performance Curve	6 kt	8 kt	10 kt	12 kt	14 kt	16 kt	20 kt
Coastal/Long Distance	1157.3	875.0	719.0	618.7	560.1	519.6	467.8