

**GPH = 602.4**    **CDL = 10.763**

**BOAT**

Class **GRAND SOLEIL 43 BC**  
Designer **BOTIN/CARKEEK**  
Builder **DEL PARDO**  
Age Date **09/2006**  
Series Date **01/2005**  
Offset File **GS43BCBK.OFF**

**HULL**

Length Overall **12.950 m**  
Maximum Beam **3.924 m**  
Draft **2.375 m**  
Displacement **10,220 kg**  
DLR **5.8349**  
IMS Division **Cruiser/Racer**  
Dynamic Allowance **0.322%**  
Age Allowance **0.487%**

**PROPELLER**

Installation **Strut**  
Type **Folding 2 blades**  
Diameter **0.430m**

**CREW**

Maximum weight **650 kg**  
Minimum weight **488 kg \* when applied**  
Non Manual Power **No**  
Crew Arm Extension

**SAIL AREAS (m<sup>2</sup>)**

|                 | Measured      | Rated         |
|-----------------|---------------|---------------|
| Mainsail        | <b>51.10</b>  | <b>52.08</b>  |
| Headsail Luffed | <b>40.12</b>  | <b>40.12</b>  |
| Headsail Flying |               |               |
| Symmetric       | <b>109.65</b> | <b>109.65</b> |
| Asymmetric      |               |               |

**SAIL LIMITATIONS**

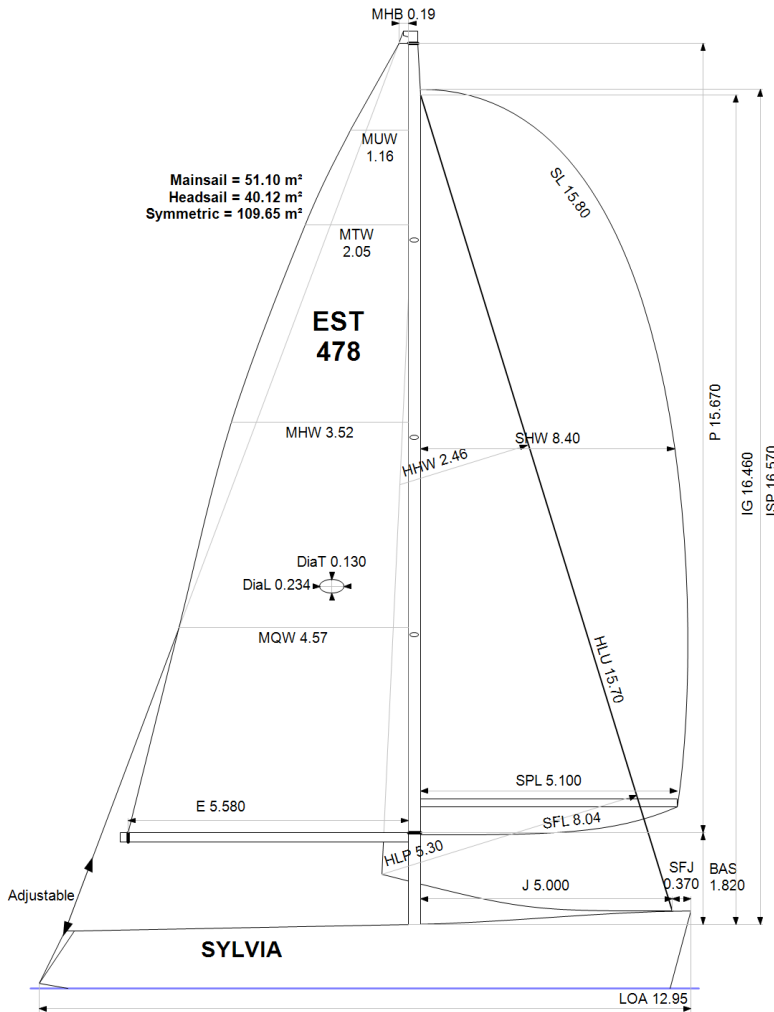
Headsails **6**  
Spinnakers **4**

**STABILITY**

Righting Moment **247.6 kg·m**  
Stability Index **N/A**

**OWNER**

*The owner certifies that he/she understands his/her responsibilities under ORC Rule and Regulations.*



| Rated boat velocities in knots |        |        |        |        |        |        |        |
|--------------------------------|--------|--------|--------|--------|--------|--------|--------|
| Wind Velocity                  | 6 kt   | 8 kt   | 10 kt  | 12 kt  | 14 kt  | 16 kt  | 20 kt  |
| Beat Angles                    | 43.5°  | 41.3°  | 40.5°  | 40.5°  | 39.4°  | 39.0°  | 38.6°  |
| Beat VMG                       | 3.43   | 4.19   | 4.78   | 5.23   | 5.46   | 5.55   | 5.63   |
| 52°                            | 5.28   | 6.29   | 7.11   | 7.59   | 7.80   | 7.89   | 7.94   |
| 60°                            | 5.60   | 6.62   | 7.39   | 7.80   | 8.01   | 8.11   | 8.17   |
| 75°                            | 5.87   | 6.90   | 7.60   | 7.97   | 8.20   | 8.38   | 8.56   |
| 90°                            | 5.81   | 6.91   | 7.73   | 8.08   | 8.27   | 8.51   | 8.94   |
| 110°                           | 5.79   | 7.05   | 7.85   | 8.27   | 8.61   | 8.89   | 9.27   |
| 120°                           | 5.63   | 6.87   | 7.75   | 8.21   | 8.57   | 8.96   | 9.65   |
| 135°                           | 5.07   | 6.26   | 7.26   | 7.89   | 8.29   | 8.66   | 9.54   |
| 150°                           | 4.24   | 5.39   | 6.38   | 7.25   | 7.86   | 8.24   | 8.97   |
| Run VMG                        | 3.68   | 4.67   | 5.53   | 6.32   | 6.99   | 7.61   | 8.39   |
| Gybe Angles                    | 144.0° | 149.0° | 151.0° | 153.5° | 162.0° | 180.0° | 180.0° |

| Time Allowances in secs/NM |        |       |       |       |       |       |       |
|----------------------------|--------|-------|-------|-------|-------|-------|-------|
| Wind Velocity              | 6 kt   | 8 kt  | 10 kt | 12 kt | 14 kt | 16 kt | 20 kt |
| Beat VMG                   | 1049.7 | 859.7 | 753.0 | 688.3 | 659.8 | 648.1 | 639.5 |
| 52°                        | 681.7  | 572.3 | 506.5 | 474.5 | 461.3 | 456.4 | 453.4 |
| 60°                        | 642.4  | 544.0 | 487.3 | 461.6 | 449.6 | 444.1 | 440.4 |
| 75°                        | 613.4  | 521.7 | 473.9 | 451.8 | 438.8 | 429.6 | 420.3 |
| 90°                        | 619.2  | 521.1 | 466.0 | 445.7 | 435.2 | 423.1 | 402.6 |
| 110°                       | 621.8  | 510.8 | 458.5 | 435.3 | 418.1 | 405.2 | 388.2 |
| 120°                       | 639.6  | 524.0 | 464.7 | 438.6 | 419.9 | 401.7 | 373.0 |
| 135°                       | 709.6  | 574.8 | 496.0 | 456.0 | 434.4 | 415.9 | 377.4 |
| 150°                       | 848.1  | 668.1 | 564.0 | 496.9 | 457.9 | 436.8 | 401.2 |
| Run VMG                    | 979.3  | 771.4 | 651.2 | 570.1 | 515.0 | 472.8 | 429.1 |
| Selected Courses           |        |       |       |       |       |       |       |
| Windward / Leeward         | 1014.5 | 815.6 | 702.1 | 629.2 | 587.4 | 560.5 | 534.3 |
| All purpose                | 776.6  | 634.6 | 555.2 | 510.6 | 486.0 | 469.1 | 449.5 |

| Single Number Scoring Options |                  |              |
|-------------------------------|------------------|--------------|
| Course                        | Time On Distance | Time On Time |
| Windward / Leeward            | 661.7            | 0.9068       |
| All purpose                   | 533.1            | 1.1255       |

### Custom scoring options for Estonia

| Single Number                              | Time On Distance | Time On Time |
|--|------------------|--------------|
| Coastal/Long Distance                      | 583.2            | 1.0289       |
| Triple Number Coastal/Long Distance Low    | 705.6            | 0.8503       |
| Triple Number Coastal/Long Distance Medium | 529.6            | 1.1329       |
| Triple Number Coastal/Long Distance High   | 466.0            | 1.2876       |
| Triple Number Windward/Leeward Low         | 915.1            | 0.6557       |
| Triple Number Windward/Leeward Medium      | 658.5            | 0.9111       |
| Triple Number Windward/Leeward High        | 557.4            | 1.0765       |

| Performance Curve     | 6 kt   | 8 kt  | 10 kt | 12 kt | 14 kt | 16 kt | 20 kt |
|-----------------------|--------|-------|-------|-------|-------|-------|-------|
| Coastal/Long Distance | 1011.0 | 765.3 | 629.2 | 546.1 | 504.6 | 475.0 | 430.8 |