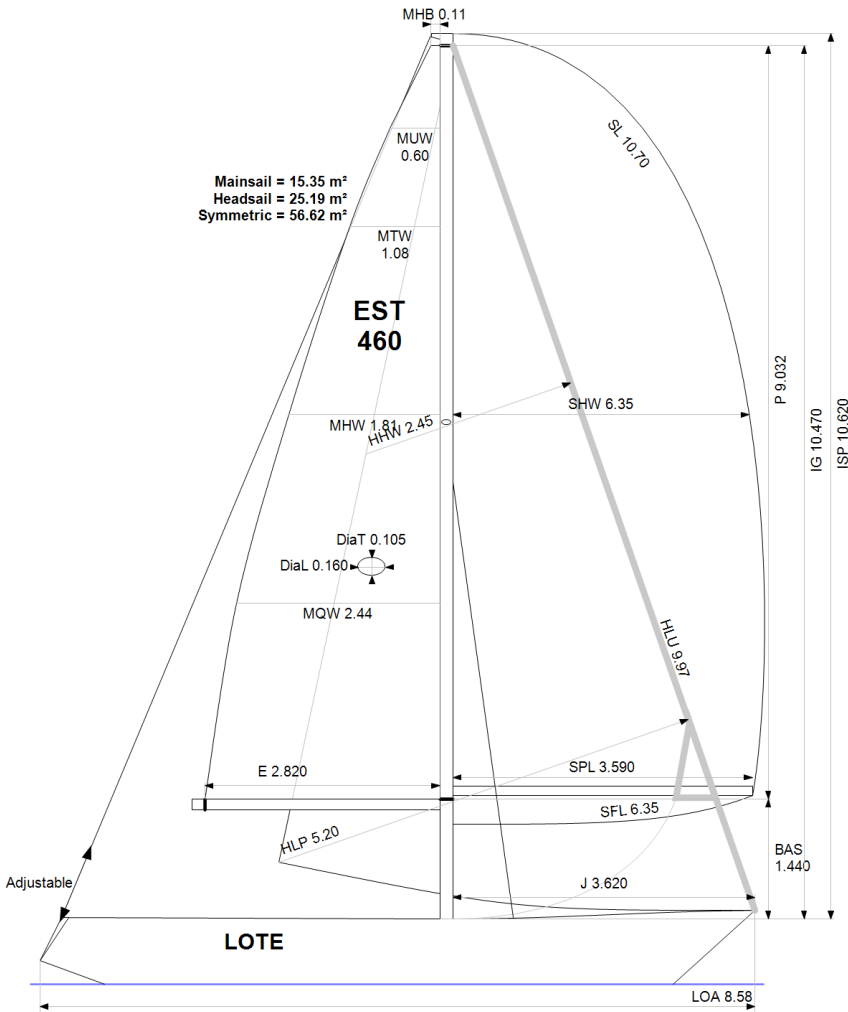


**GPH = 749.7**    **CDL = 6.257**



**BOAT**

Class **COMPIS 28**  
Designer **BO ANDERSSON**  
Builder **KARLSTAD**  
Age Date **01/1974**  
Series Date **01/1971**  
Offset File **e186.bof**

**HULL**

Length Overall **8.580 m**  
Maximum Beam **2.920 m**  
Draft **1.565 m**  
Displacement **3,296 kg**  
DLR **9.3104**  
IMS Division **Cruiser/Racer**  
Dynamic Allowance **0.522%**  
Age Allowance **0.487%**

**PROPELLER**

Installation **Shaft non exposed**  
Type **Folding 2 blades**  
Diameter **0.330m**

**CREW**

Maximum weight **256 kg**  
Minimum weight **171 kg \* when applied**  
Non Manual Power **No**  
Crew Arm Extension

**SAIL AREAS (m²)**

	Measured	Rated
Mainsail	<b>15.35</b>	<b>15.61</b>
Headsail Luffed	<b>25.19</b>	<b>25.19</b>
Headsail Flying		
Symmetric	<b>56.62</b>	<b>56.62</b>
Asymmetric		

**SAIL LIMITATIONS**

Headsails **1**  
Spinnakers **4**

**STABILITY**

Righting Moment **42.0 kg·m**  
Stability Index **N/A**

**OWNER**

*The owner certifies that he/she understands his/her responsibilities under ORC Rule and Regulations.*

Rated boat velocities in knots							
Wind Velocity	6 kt	8 kt	10 kt	12 kt	14 kt	16 kt	20 kt
Beat Angles	42.0°	41.1°	41.3°	41.3°	41.1°	40.9°	41.3°
Beat VMG	2.86	3.37	3.75	4.02	4.14	4.20	4.20
52°	4.34	5.05	5.58	5.85	5.99	6.07	6.10
60°	4.56	5.31	5.78	6.02	6.16	6.25	6.32
75°	4.74	5.52	5.94	6.16	6.33	6.47	6.66
90°	4.69	5.57	6.06	6.25	6.40	6.57	6.88
110°	4.80	5.74	6.18	6.47	6.73	6.89	7.12
120°	4.68	5.65	6.15	6.45	6.74	7.02	7.37
135°	4.32	5.22	5.94	6.28	6.57	6.87	7.44
150°	3.72	4.60	5.41	5.98	6.29	6.56	7.12
Run VMG	3.22	3.99	4.70	5.34	5.88	6.21	6.73
Gybe Angles	148.5°	153.0°	152.0°	165.0°	180.0°	180.0°	180.0°

Time Allowances in secs/NM							
Wind Velocity	6 kt	8 kt	10 kt	12 kt	14 kt	16 kt	20 kt
Beat VMG	1258.2	1068.1	959.2	895.7	869.4	856.7	857.5
52°	830.3	713.4	644.7	614.9	600.6	593.4	590.1
60°	789.3	677.5	622.6	598.4	584.7	575.7	570.0
75°	759.0	651.8	606.5	584.3	569.1	556.7	540.3
90°	767.0	646.0	594.5	575.6	562.9	548.0	523.4
110°	750.2	627.6	582.1	556.3	535.0	522.3	505.4
120°	769.7	637.1	585.7	557.9	534.1	512.9	488.6
135°	834.1	689.9	606.5	572.8	547.7	523.7	484.1
150°	967.2	782.4	665.8	601.6	572.0	548.8	505.5
Run VMG	1116.8	902.4	766.2	674.3	612.7	580.0	535.2
Selected Courses							
Windward / Leeward	1187.5	985.3	862.7	785.0	741.0	718.4	696.3
All purpose	925.3	774.6	692.8	647.8	621.2	604.8	585.2

Single Number Scoring Options		
Course	Time On Distance	Time On Time
Windward / Leeward	820.8	0.7310
All purpose	670.6	0.8947

### Custom scoring options for Estonia

Single Number	Time On Distance	Time On Time
Coastal/Long Distance	729.8	0.8222
Triple Number Coastal/Long Distance Low	850.0	0.7059
Triple Number Coastal/Long Distance Medium	666.7	0.9000
Triple Number Coastal/Long Distance High	601.6	0.9974
Triple Number Windward/Leeward Low	1086.4	0.5523
Triple Number Windward/Leeward Medium	816.5	0.7348
Triple Number Windward/Leeward High	715.7	0.8383

Performance Curve	6 kt	8 kt	10 kt	12 kt	14 kt	16 kt	20 kt
Coastal/Long Distance	1180.4	925.4	778.4	691.1	645.9	611.6	559.1