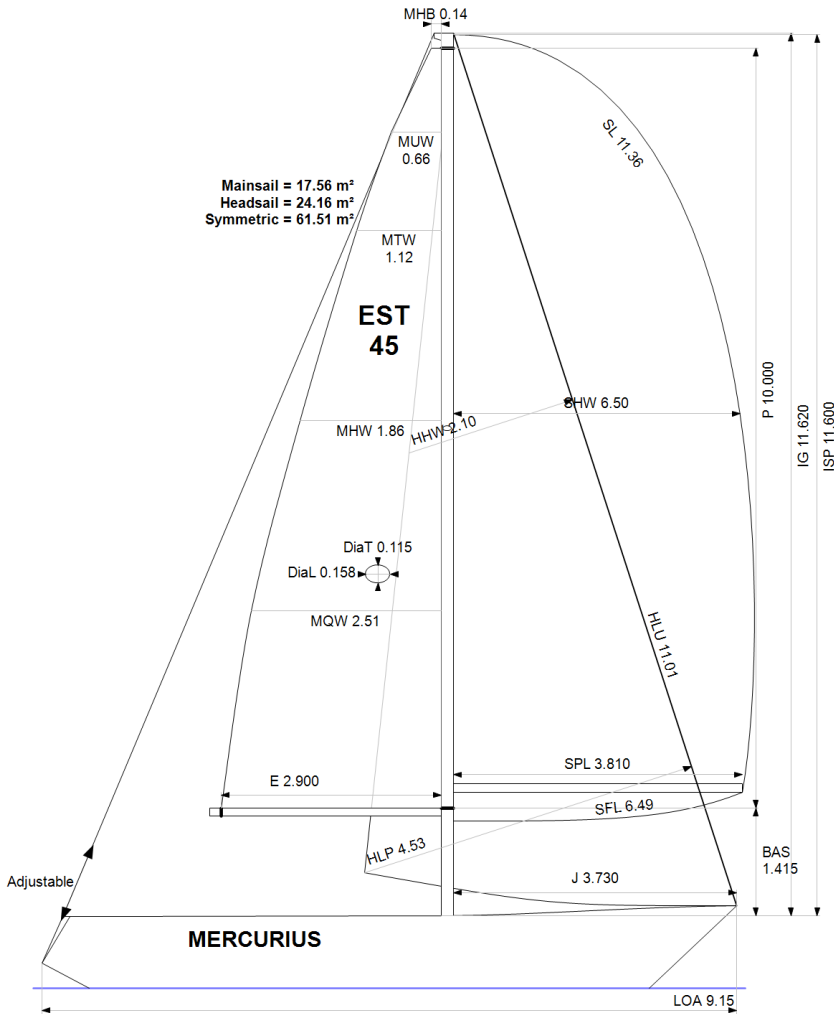


**GPH = 737.0** **CDL = 6.613**



**BOAT**

Class **CARTER 30**  
Designer **Richard Carter**  
Builder **Teliga**  
Age Date **06/1987**  
Series Date **12/1975**  
Offset File **GR0044.BOF**

**HULL**

Length Overall **9.150 m**  
Maximum Beam **3.058 m**  
Draft **1.585 m**  
Displacement **3,768 kg**  
DLR **8.6467**  
IMS Division **Cruiser/Racer**  
Dynamic Allowance **0.489%**  
Age Allowance **0.487%**

**PROPELLER**

Installation **Shaft exposed**  
Type **Folding 2 blades**  
Diameter **0.400m**

**CREW**

Maximum weight **450 kg**  
Minimum weight **338 kg \* when applied**  
Non Manual Power **No**  
Crew Arm Extension

**SAIL AREAS (m²)**

	Measured	Rated
Mainsail	<b>17.56</b>	<b>17.82</b>
Headsail Luffed	<b>24.16</b>	<b>24.16</b>
Headsail Flying		
Symmetric	<b>61.51</b>	<b>61.51</b>
Asymmetric		

**SAIL LIMITATIONS**

Headsails **5**  
Spinnakers **4**

**STABILITY**

Righting Moment **53.7 kg·m**  
Stability Index **N/A**

**OWNER**

*The owner certifies that he/she understands his/her responsibilities under ORC Rule and Regulations.*

Rated boat velocities in knots							
Wind Velocity	6 kt	8 kt	10 kt	12 kt	14 kt	16 kt	20 kt
Beat Angles	42.8°	41.3°	41.6°	41.3°	40.3°	40.1°	40.5°
Beat VMG	2.84	3.37	3.78	4.12	4.30	4.36	4.31
52°	4.33	5.08	5.66	6.00	6.17	6.25	6.26
60°	4.56	5.36	5.89	6.16	6.33	6.43	6.47
75°	4.72	5.56	6.05	6.30	6.48	6.64	6.83
90°	4.74	5.70	6.23	6.48	6.58	6.72	7.06
110°	4.86	5.86	6.35	6.65	6.94	7.16	7.42
120°	4.74	5.74	6.29	6.62	6.93	7.23	7.68
135°	4.37	5.30	6.05	6.42	6.73	7.04	7.66
150°	3.77	4.69	5.49	6.10	6.44	6.71	7.30
Run VMG	3.27	4.06	4.77	5.42	5.98	6.34	6.89
Gybe Angles	148.0°	152.0°	152.0°	162.0°	180.0°	180.0°	180.0°

Time Allowances in secs/NM							
Wind Velocity	6 kt	8 kt	10 kt	12 kt	14 kt	16 kt	20 kt
Beat VMG	1269.6	1068.7	952.6	873.5	837.0	826.4	835.1
52°	831.8	708.9	635.6	600.4	583.5	576.4	575.3
60°	789.5	671.6	611.7	584.5	569.1	560.1	556.3
75°	762.4	647.4	595.2	571.4	555.2	542.4	527.0
90°	758.8	631.3	577.8	555.9	546.8	535.6	509.6
110°	740.1	614.8	567.4	541.0	519.0	502.5	485.4
120°	758.7	626.9	572.1	544.0	519.8	497.9	469.0
135°	823.1	679.5	595.5	560.4	535.3	511.2	470.2
150°	954.0	768.4	655.6	590.0	559.4	536.3	493.1
Run VMG	1101.6	886.2	754.4	664.6	601.7	567.5	522.7
Selected Courses							
Windward / Leeward	1185.6	977.4	853.5	769.1	719.4	696.9	678.9
All purpose	922.0	766.5	682.1	632.6	603.3	587.2	569.2

Single Number Scoring Options		
Course	Time On Distance	Time On Time
Windward / Leeward	806.0	0.7444
All purpose	656.8	0.9135

### Custom scoring options for Estonia

Single Number	Time On Distance	Time On Time
Coastal/Long Distance	715.4	0.8387
Triple Number Coastal/Long Distance Low	844.2	0.7107
Triple Number Coastal/Long Distance Medium	653.0	0.9189
Triple Number Coastal/Long Distance High	584.5	1.0265
Triple Number Windward/Leeward Low	1081.5	0.5548
Triple Number Windward/Leeward Medium	802.1	0.7480
Triple Number Windward/Leeward High	695.8	0.8623

Performance Curve	6 kt	8 kt	10 kt	12 kt	14 kt	16 kt	20 kt
Coastal/Long Distance	1177.2	916.9	768.2	675.1	627.3	594.4	543.3