

GPH = 764.7 **CDL = 5.823**

BOAT

Class **RJ 85**
 Designer
 Builder **Jakobssen**
 Age Date **01/1975**
 Series Date **01/1969**
 Offset File **EST437custom R.off**

HULL

Length Overall **8.550 m**
 Maximum Beam **2.012 m**
 Draft **1.233 m**
 Displacement **2,340 kg**
 DLR **8.4509**
 IMS Division **Cruiser/Racer**
 Dynamic Allowance **0.332%**
 Age Allowance **0.487%**

PROPELLER

Installation **No Propeller**
 Type **N/A**
 Diameter **N/A**

CREW

Maximum weight **185 kg**
 Minimum weight **120 kg * when applied**
 Non Manual Power **No**
 Crew Arm Extension

SAIL AREAS (m²)

	Measured	Rated
Mainsail	17.32	17.85
Headsail Luffed	20.00	20.00
Headsail Flying		
Symmetric	38.52	38.52
Asymmetric		

SAIL LIMITATIONS

Headsails **5**
 Spinnakers **4**

STABILITY

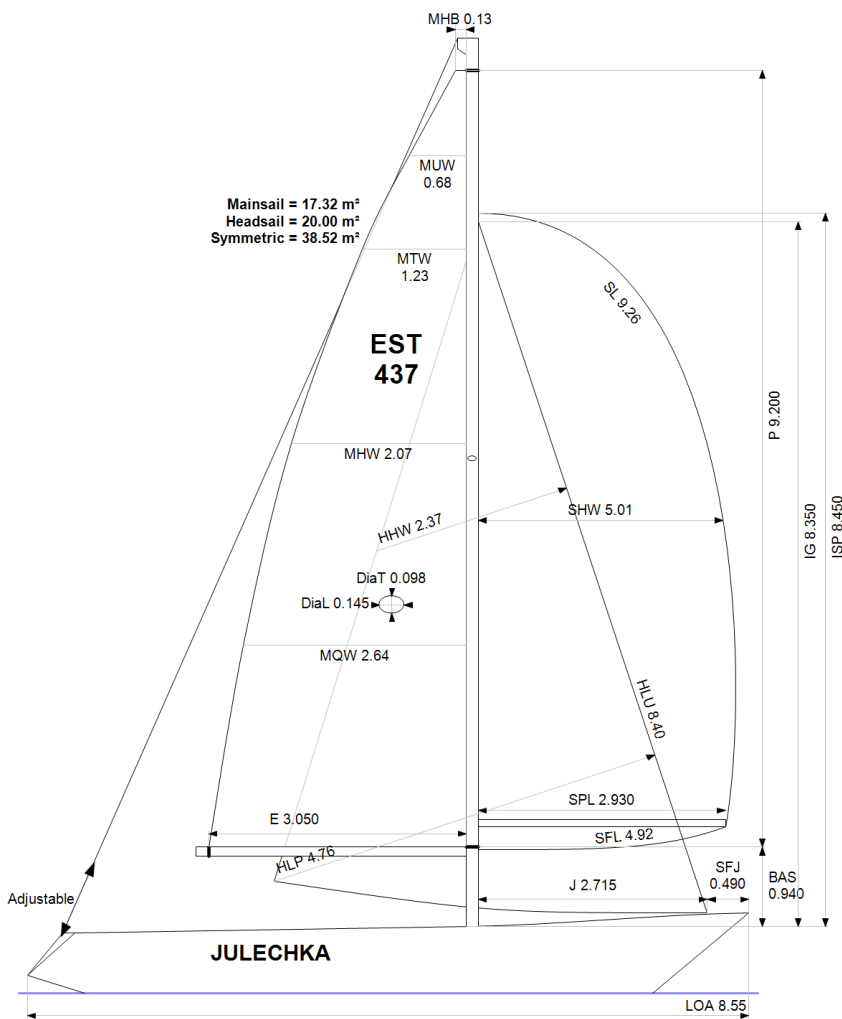
Righting Moment **23.1 kg·m**
 Stability Index **N/A**

COMMENTS

koos päramootruga internal ballast 165kg

OWNER

The owner certifies that he/she understands his/her responsibilities under ORC Rule and Regulations.



Rated boat velocities in knots

Wind Velocity	6 kt	8 kt	10 kt	12 kt	14 kt	16 kt	20 kt
Beat Angles	42.8°	41.3°	42.8°	42.8°	42.8°	43.3°	44.3°
Beat VMG	2.91	3.42	3.68	3.80	3.85	3.85	3.81
52°	4.41	5.16	5.56	5.69	5.74	5.77	5.76
60°	4.65	5.43	5.77	5.90	5.96	5.98	5.97
75°	4.86	5.62	5.95	6.11	6.20	6.25	6.28
90°	4.83	5.64	6.00	6.21	6.36	6.49	6.62
110°	4.77	5.70	6.11	6.37	6.52	6.64	6.85
120°	4.62	5.60	6.07	6.36	6.63	6.86	7.13
135°	4.13	5.08	5.85	6.19	6.48	6.78	7.41
150°	3.53	4.44	5.30	5.90	6.21	6.48	7.09
Run VMG	3.06	3.85	4.59	5.30	5.83	6.15	6.69
Gybe Angles	149.0°	153.0°	151.0°	167.5°	180.0°	180.0°	180.0°

Time Allowances in secs/NM							
Wind Velocity	6 kt	8 kt	10 kt	12 kt	14 kt	16 kt	20 kt
Beat VMG	1236.9	1053.5	978.0	946.8	935.8	935.9	944.6
52°	816.3	697.7	648.0	632.9	626.8	624.3	625.4
60°	774.4	663.4	623.5	610.3	604.3	601.9	603.5
75°	740.3	640.0	605.4	589.2	580.4	575.8	573.7
90°	744.6	638.8	599.9	580.0	565.9	554.9	543.8
110°	754.9	631.7	588.9	565.5	552.5	542.2	525.4
120°	778.5	643.4	593.2	566.3	542.8	524.7	505.2
135°	872.0	709.0	615.4	581.4	555.8	530.6	485.7
150°	1019.7	810.6	679.7	609.7	579.5	555.3	507.4
Run VMG	1177.4	934.6	783.6	679.4	617.5	585.3	538.1
Selected Courses							
Windward / Leeward	1207.2	994.1	880.8	813.1	776.7	760.6	741.3
All purpose	930.9	776.5	702.9	665.4	644.3	632.8	617.2

Single Number Scoring Options		
Course	Time On Distance	Time On Time
Windward / Leeward	848.3	0.7073
All purpose	687.4	0.8729

Custom scoring options for Estonia

Single Number	Time On Distance	Time On Time
Coastal/Long Distance	748.6	0.8015
Triple Number Coastal/Long Distance Low	853.7	0.7028
Triple Number Coastal/Long Distance Medium	681.9	0.8799
Triple Number Coastal/Long Distance High	629.9	0.9526
Triple Number Windward/Leeward Low	1100.5	0.5452
Triple Number Windward/Leeward Medium	841.6	0.7129
Triple Number Windward/Leeward High	757.4	0.7922

Performance Curve	6 kt	8 kt	10 kt	12 kt	14 kt	16 kt	20 kt
Coastal/Long Distance	1204.2	933.1	792.4	711.9	669.6	637.6	584.9