

GPH = 586.6 **CDL = 10.575**

BOAT

Class **ELAN 410**
Designer **ROB HUMPHREYS**
Builder **ELAN MARIN**
Age Date **03/2009**
Series Date **05/2007**
Offset File **ELAN410N.OFF**

HULL

Length Overall **12.270 m**
Maximum Beam **3.878 m**
Draft **2.139 m**
Displacement **9,106 kg**
DLR **5.7209**
IMS Division **Cruiser/Racer**
Dynamic Allowance **0.078%**
Age Allowance **0.455%**

PROPELLER

Installation **Strut**
Type **Folding 3 blades**
Diameter **0.425m**

CREW

Maximum weight **800 kg**
Minimum weight **600 kg * when applied**
Non Manual Power **No**
Crew Arm Extension

SAIL AREAS (m²)

	Measured	Rated
Mainsail	53.13	54.22
Headsail Luffed	53.10	53.10
Headsail Flying		
Symmetric	130.50	130.50
Asymmetric		

SAIL LIMITATIONS

Headsails **6**
Spinnakers **4**

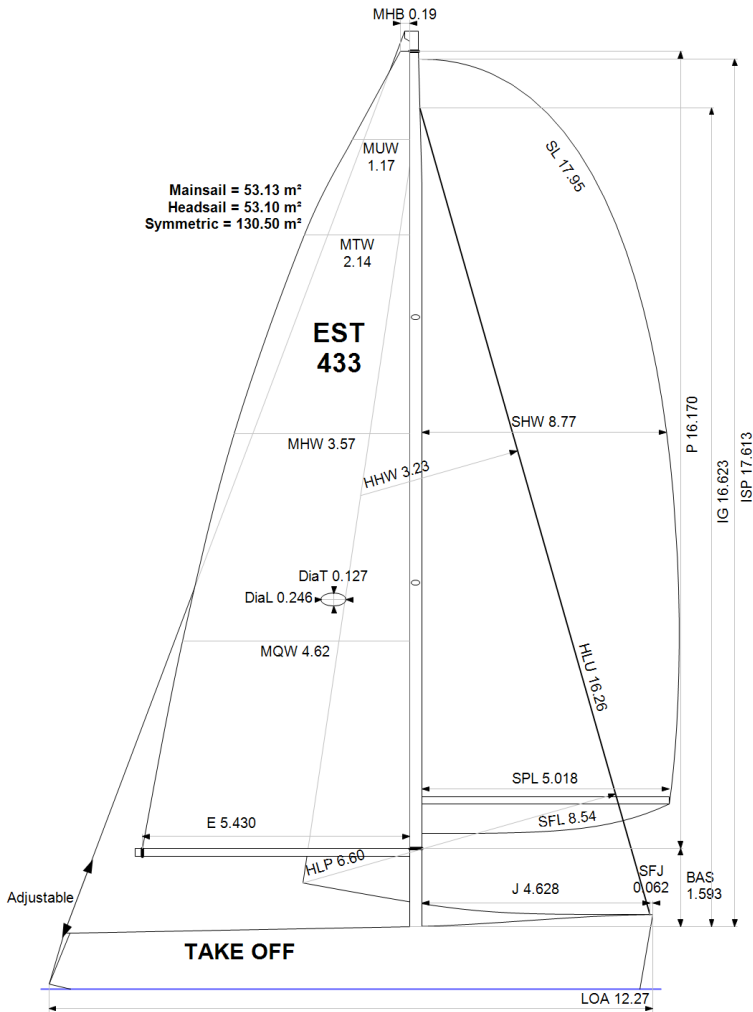
STABILITY

Righting Moment **194.0 kg·m**
Stability Index **N/A**

COMMENTS

Ex SWE-48

OWNER



Rated boat velocities in knots

Wind Velocity	6 kt	8 kt	10 kt	12 kt	14 kt	16 kt	20 kt
Beat Angles	42.8°	41.3°	41.3°	40.1°	39.6°	39.2°	39.0°
Beat VMG	3.70	4.46	4.99	5.27	5.39	5.45	5.52
52°	5.65	6.69	7.35	7.61	7.71	7.76	7.81
60°	5.98	7.01	7.58	7.82	7.93	7.98	8.02
75°	6.26	7.25	7.74	8.01	8.20	8.31	8.41
90°	6.21	7.23	7.76	8.07	8.32	8.55	8.90
110°	5.98	7.23	7.88	8.24	8.51	8.72	9.12
120°	5.83	7.09	7.81	8.22	8.62	9.01	9.51
135°	5.29	6.51	7.46	7.96	8.35	8.79	9.77
150°	4.47	5.61	6.62	7.45	7.93	8.30	9.14
Run VMG	3.87	4.86	5.73	6.51	7.15	7.71	8.46
Gybe Angles	142.5°	148.5°	150.5°	155.0°	168.0°	180.0°	180.0°

The owner certifies that he/she understands his/her responsibilities under ORC Rule and Regulations.

Time Allowances in secs/NM							
Wind Velocity	6 kt	8 kt	10 kt	12 kt	14 kt	16 kt	20 kt
Beat VMG	974.0	807.4	720.9	683.5	667.5	660.0	652.3
52°	637.5	538.4	489.6	473.0	466.7	463.7	461.0
60°	602.2	513.4	475.2	460.2	454.2	451.0	448.9
75°	575.1	496.6	464.9	449.3	439.1	433.4	428.1
90°	579.5	497.6	463.8	446.3	432.7	420.9	404.6
110°	602.0	498.3	457.0	436.7	423.2	412.9	394.9
120°	617.1	508.1	461.2	437.9	417.6	399.3	378.7
135°	680.7	553.3	482.7	452.0	431.1	409.7	368.3
150°	805.2	641.5	543.8	483.0	453.8	433.8	393.8
Run VMG	929.7	740.8	627.8	552.8	503.8	466.7	425.8
Selected Courses							
Windward / Leeward	951.9	774.1	674.4	618.2	585.6	563.3	539.0
All purpose	731.9	604.5	539.1	505.7	486.4	471.9	453.2

Single Number Scoring Options		
Course	Time On Distance	Time On Time
Windward / Leeward	645.7	0.9292
All purpose	523.7	1.1456

Custom scoring options for Estonia

Single Number	Time On Distance	Time On Time
Coastal/Long Distance	571.0	1.0509
Triple Number Coastal/Long Distance Low	668.2	0.8979
Triple Number Coastal/Long Distance Medium	520.2	1.1533
Triple Number Coastal/Long Distance High	468.6	1.2805
Triple Number Windward/Leeward Low	862.9	0.6953
Triple Number Windward/Leeward Medium	641.8	0.9349
Triple Number Windward/Leeward High	559.8	1.0718

Performance Curve	6 kt	8 kt	10 kt	12 kt	14 kt	16 kt	20 kt
Coastal/Long Distance	949.6	727.3	607.8	539.8	504.5	476.9	435.0