

GPH = **738.7** CDL = **6.579**

BOAT

Class **CARTER 30**
Designer
Builder **Teliga**
Age Date **01/1975**
Series Date **01/1972**
Offset File **GR0044.BOF**

HULL

Length Overall **9.130 m**
Maximum Beam **3.058 m**
Draft **1.563 m**
Displacement **3,495 kg**
DLR **8.1237**
IMS Division **Cruiser/Racer**
Dynamic Allowance **0.420%**
Age Allowance **0.487%**

PROPELLER

Installation **Shaft exposed**
Type **Folding 2 blades**
Diameter **0.381m**

CREW

Maximum weight **461 kg**
Minimum weight **346 kg** * when applied
Non Manual Power **No**
Crew Arm Extension

SAIL AREAS (m²)

	Measured	Rated
Mainsail	16.70	16.88
Headsail Luffed	27.22	27.22
Headsail Flying		
Symmetric	61.94	61.94
Asymmetric		

SAIL LIMITATIONS

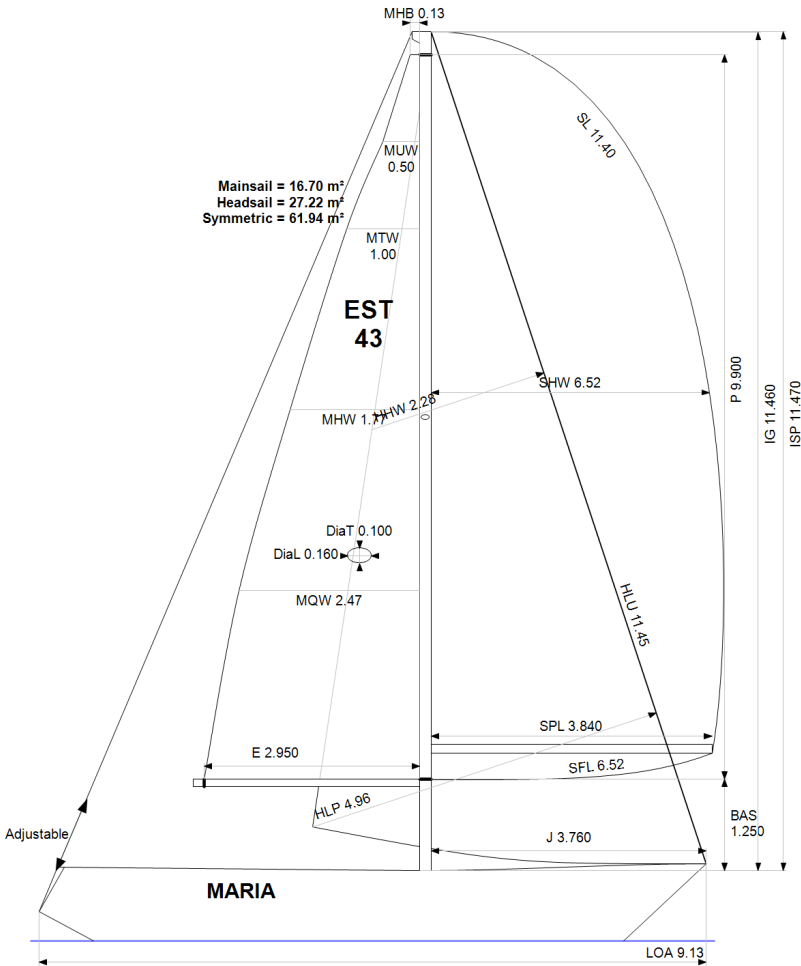
Headsails **5** * Woven polyester sails
Spinnakers **4**

STABILITY

Righting Moment **40.9 kg·m**
Stability Index **N/A**

OWNER

The owner certifies that he/she understands his/her responsibilities under ORC Rule and Regulations.



Rated boat velocities in knots

Wind Velocity	6 kt	8 kt	10 kt	12 kt	14 kt	16 kt	20 kt
Beat Angles	43.1°	41.3°	42.0°	41.3°	40.5°	40.5°	41.3°
Beat VMG	2.84	3.38	3.81	4.12	4.25	4.29	4.22
52°	4.35	5.12	5.69	5.99	6.13	6.18	6.17
60°	4.59	5.41	5.90	6.15	6.29	6.36	6.38
75°	4.77	5.61	6.06	6.30	6.47	6.61	6.75
90°	4.71	5.67	6.19	6.41	6.54	6.72	7.05
110°	4.84	5.83	6.32	6.62	6.90	7.11	7.36
120°	4.71	5.72	6.27	6.60	6.92	7.22	7.63
135°	4.34	5.28	6.03	6.40	6.71	7.05	7.67
150°	3.74	4.66	5.48	6.08	6.41	6.70	7.31
Run VMG	3.24	4.04	4.76	5.40	5.96	6.32	6.88
Gybe Angles	148.0°	152.0°	152.0°	162.0°	180.0°	180.0°	180.0°

Time Allowances in secs/NM							
Wind Velocity	6 kt	8 kt	10 kt	12 kt	14 kt	16 kt	20 kt
Beat VMG	1266.2	1064.1	945.8	873.6	847.6	839.5	853.5
52°	828.3	703.4	632.6	600.9	587.5	582.9	583.5
60°	784.4	665.5	609.8	585.2	572.0	565.9	564.3
75°	755.3	641.3	593.7	571.6	556.4	544.6	533.7
90°	763.6	635.4	581.9	561.7	550.6	535.4	510.8
110°	744.5	617.2	569.9	543.6	521.5	506.1	488.9
120°	763.6	629.2	574.3	545.8	520.5	498.4	471.7
135°	829.3	681.9	597.1	562.1	536.3	510.9	469.1
150°	961.9	772.4	657.5	591.7	561.2	537.5	492.5
Run VMG	1110.7	891.1	756.8	666.6	603.7	569.6	523.5
Selected Courses							
Windward / Leeward	1188.4	977.6	851.3	770.1	725.6	704.5	688.5
All purpose	923.7	766.1	681.5	634.2	607.3	591.8	575.4

Single Number Scoring Options		
Course	Time On Distance	Time On Time
Windward / Leeward	808.5	0.7421
All purpose	658.7	0.9108

Custom scoring options for Estonia

Single Number	Time On Distance	Time On Time
Coastal/Long Distance	717.3	0.8365
Triple Number Coastal/Long Distance Low	845.0	0.7101
Triple Number Coastal/Long Distance Medium	654.2	0.9171
Triple Number Coastal/Long Distance High	589.5	1.0178
Triple Number Windward/Leeward Low	1083.0	0.5540
Triple Number Windward/Leeward Medium	803.3	0.7469
Triple Number Windward/Leeward High	703.8	0.8525

Performance Curve	6 kt	8 kt	10 kt	12 kt	14 kt	16 kt	20 kt
Coastal/Long Distance	1180.7	917.2	767.0	676.6	631.5	598.7	548.1

