

**GPH = 751.1** **CDL = 6.304**

**BOAT**

Class **OHLSON 29**  
Designer  
Builder **Artecno AB**  
Age Date **01/1976**  
Series Date **01/1970**  
Offset File **GR0073.BOF**

**HULL**

Length Overall **9.090 m**  
Maximum Beam **2.700 m**  
Draft **1.559 m**  
Displacement **3,116 kg**  
DLR **9.7784**  
IMS Division **Cruiser/Racer**  
Dynamic Allowance **0.543%**  
Age Allowance **0.487%**

**PROPELLER**

Installation **Strut**  
Type **Folding 2 blades**  
Diameter **0.395m**

**CREW**

Maximum weight **410 kg**  
Minimum weight **308 kg** \* when applied  
Non Manual Power **No**  
Crew Arm Extension

**SAIL AREAS (m<sup>2</sup>)**

	Measured	Rated
Mainsail	<b>14.16</b>	<b>14.28</b>
Headsail Luffed	<b>24.94</b>	<b>24.94</b>
Headsail Flying		
Symmetric	<b>51.72</b>	<b>51.72</b>
Asymmetric		

**SAIL LIMITATIONS**

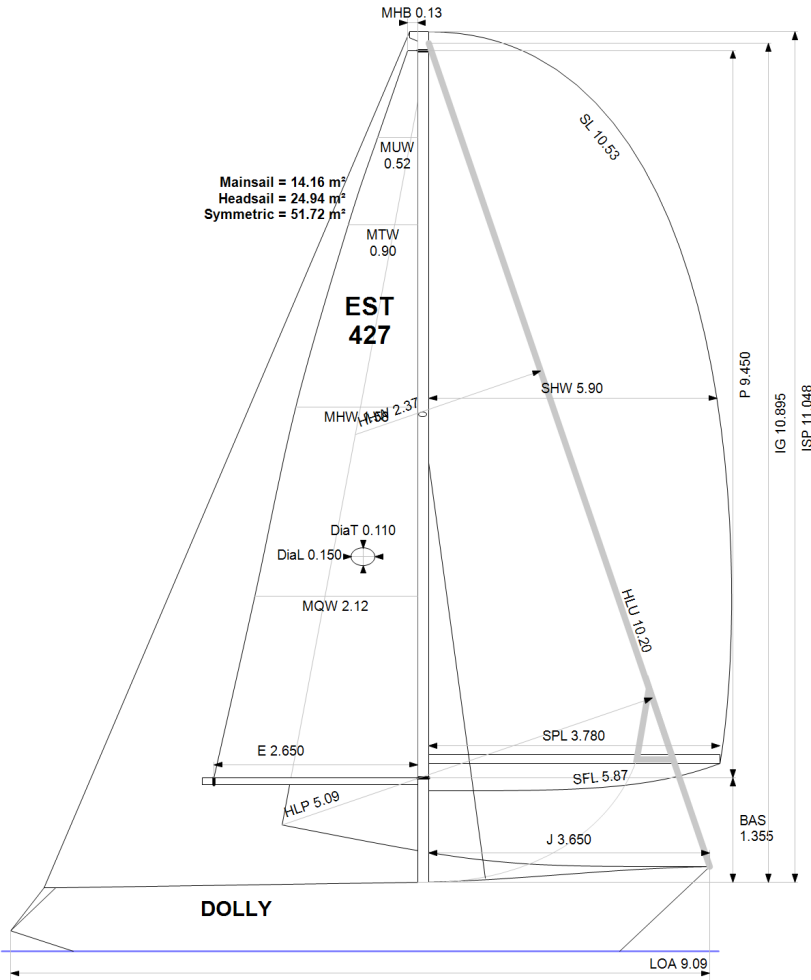
Headsails **1** \* Woven polyester sails  
Spinnakers **4**

**STABILITY**

Righting Moment **57.2 kg·m**  
Stability Index **N/A**

**OWNER**

*The owner certifies that he/she understands his/her responsibilities under ORC Rule and Regulations.*



Rated boat velocities in knots							
Wind Velocity	6 kt	8 kt	10 kt	12 kt	14 kt	16 kt	20 kt
Beat Angles	44.3°	42.8°	42.8°	41.6°	40.1°	39.6°	39.8°
Beat VMG	2.73	3.26	3.68	4.05	4.30	4.41	4.43
52°	4.21	4.98	5.58	5.93	6.13	6.24	6.29
60°	4.46	5.28	5.81	6.09	6.28	6.41	6.51
75°	4.65	5.50	5.98	6.23	6.42	6.60	6.85
90°	4.60	5.57	6.13	6.42	6.58	6.69	7.03
110°	4.72	5.71	6.23	6.55	6.86	7.14	7.45
120°	4.60	5.60	6.17	6.50	6.82	7.14	7.68
135°	4.23	5.16	5.91	6.30	6.61	6.93	7.55
150°	3.66	4.57	5.36	5.98	6.32	6.60	7.19
Run VMG	3.17	3.96	4.66	5.30	5.86	6.23	6.78
Gybe Angles	148.0°	152.0°	153.0°	161.0°	180.0°	180.0°	180.0°

Time Allowances in secs/NM							
Wind Velocity	6 kt	8 kt	10 kt	12 kt	14 kt	16 kt	20 kt
Beat VMG	1317.6	1103.4	977.4	888.0	836.7	815.6	812.8
52°	854.9	723.4	645.4	606.9	587.2	576.5	572.0
60°	806.8	682.3	619.3	590.7	573.4	561.6	553.4
75°	774.1	654.6	602.4	577.9	560.4	545.7	525.2
90°	782.7	646.8	587.0	560.6	547.0	538.4	511.8
110°	763.1	629.9	578.0	549.5	524.5	503.9	483.2
120°	782.7	643.2	583.5	553.6	527.6	504.0	468.9
135°	850.6	697.2	608.8	571.1	544.7	519.3	476.9
150°	983.5	788.0	671.5	602.3	569.8	545.5	500.5
Run VMG	1135.6	908.9	772.1	679.7	614.0	578.1	531.0
Selected Courses							
Windward / Leeward	1226.6	1006.2	874.8	783.8	725.4	696.8	671.9
All purpose	951.3	786.3	696.5	642.8	608.3	588.7	565.9

Single Number Scoring Options		
Course	Time On Distance	Time On Time
Windward / Leeward	820.4	0.7313
All purpose	667.2	0.8993

### Custom scoring options for Estonia

Single Number	Time On Distance	Time On Time
Coastal/Long Distance	728.1	0.8241
Triple Number Coastal/Long Distance Low	868.8	0.6906
Triple Number Coastal/Long Distance Medium	664.0	0.9036
Triple Number Coastal/Long Distance High	585.1	1.0255
Triple Number Windward/Leeward Low	1116.5	0.5374
Triple Number Windward/Leeward Medium	818.1	0.7334
Triple Number Windward/Leeward High	694.6	0.8638

Performance Curve	6 kt	8 kt	10 kt	12 kt	14 kt	16 kt	20 kt
Coastal/Long Distance	1217.5	942.9	785.9	686.4	632.5	596.6	542.4

